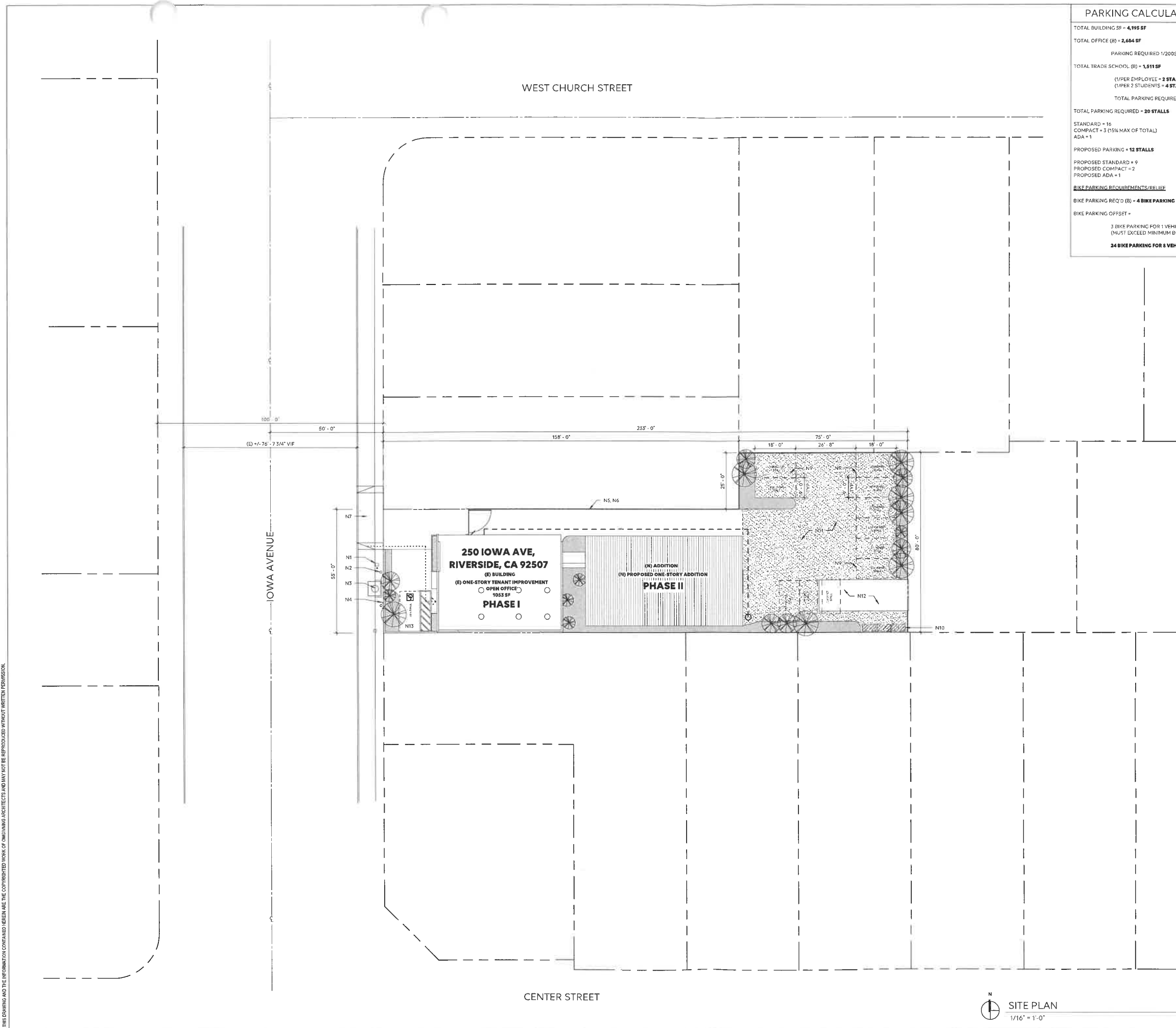


THIS DRAWING AND THE INFORMATION CONTAINED HEREIN ARE THE COPYRIGHTED WORK OF OMGI VINING ARCHITECTS AND MAY NOT BE REPRODUCED WITHOUT WRITTEN PERMISSION.



PARKING CALCULATION	
TOTAL BUILDING SF = 4,995 SF	
TOTAL OFFICE (B) = 2,684 SF	
PARKING REQUIRED 1/200SF = 14 STALLS	
TOTAL TRADE SCHOOL (B) = 1,511 SF	
(1/PER EMPLOYEE = 2 STALLS)	
(1/PER 2 STUDENTS = 4 STALLS)	
TOTAL PARKING REQUIRED = 6 STALLS	
TOTAL PARKING REQUIRED = 20 STALLS	
STANDARD = 16	
COMPACT = 3 (5% MAX OF TOTAL)	
ADA = 1	
PROPOSED PARKING = 12 STALLS	
PROPOSED STANDARD = 9	
PROPOSED COMPACT = 2	
PROPOSED ADA = 1	
BIKE PARKING REQUIREMENTS/RELIEF	
BIKE PARKING REQ'D (B) = 4 BIKE PARKING MINIMUM	
BIKE PARKING OFFSET =	
3 BIKE PARKING FOR 1 VEHICLE STALL (MUST EXCEED MINIMUM BIKE PARKING)	
<b>24 BIKE PARKING FOR 8 VEHICLE STALLS</b>	

NOTES	
N1.	(E) UTILITIES
N2.	(E) TRANSFORMER VENT
N3.	(E) SEWER ACCESS
N4.	(E) BOLLARDS
N5.	PROPERTY LINE
N6.	10FT H PROPERTY FENCE W/ RECYCLED MATERIALS
N7.	(E) DRIVEWAY AND CURB CUT
N8.	NOT USED
N9.	PARKING STRIPING
N10.	TRASH BIN LOCATION, (3) 4 CY BINS
N11.	PEA GRAVEL OR DC PARKING LOT, SEE CIVIL
N12.	(E) CANOPY TO REMAIN IN PLACE, BIKE STALLS UNDERNEATH
N13.	ADA STALL GC TO PROVIDE FLAT ADA COMPLIANT PAVED SLOPE AREA

**OMGI VINING**  
architecture / interiors

724 S. SPRING ST., SUITE 501  
LOS ANGELES, CA 90014

**PARAGON INSTITUTE**  
250 IOWA AVENUE, RIVERSIDE CA

PRELIMINARY PRICING SET

250 IOWA AVENUE  
RIVERSIDE, CA 92507



REVISIONS:

- SHEET NOTES**
- A. ALL DIMENSIONS ARE TO FOS OR FOM UNO.
  - B. SEE SHEETS G-40-G-42 FOR TYP ACCESSIBILITY REQUIREMENTS.
  - C. ALL DIMENSIONS INDICATED AS "CLR" ARE FROM FINISH TO FINISH.
  - D. PROVIDE EXPANSION JOINTS AT ALL POINTS OF CONTACT BETWEEN SLAB AND VERTICAL SURFACES.
  - E. CONTROL JOINTS OR CONSTRUCTION JOINTS SHALL DIVIDE THE SLAB ON GRADE INTO SECTIONS WITH AREAS NOT EXCEEDING 400SF (20' X 20') WITHOUT RE-ENTRANT CORNERS AND LENGTH TO WIDTH RATIO NOT EXCEEDING 1 1/2:1. ADDITIONAL CONTROL OR CONSTRUCTION JOINTS SHALL BE PLACED AT RE-ENTRANT CORNERS.
  - F. PROVIDE APPROVED ADDRESS THAT IS LEGIBLE AND PLACED VISIBLE FROM THE STREET OR ROAD FRONTING THE PROPERTY.
  - G. SEE CIVIL FOR THE LOCATION, SIZE AND OVERFLOW FOR THE PLANTER BOXES.

**LEGEND**

	LANDSCAPE AREA, SEE CIVIL
	ACCESSIBLE PATH OF TRAVEL
	FIRE HYDRANT
	OVERHEAD POWER LINE

**SITE PLAN**  
1/16" = 1'-0"

1

08.25.23

SITE PLAN

**A000**