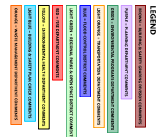


FEDEX FREIGHT PERRIS SITE WORK

20388 HARVILL AVENUE PERRIS, CALIFORNIA 92570

APN: 317-240-008-015, 013, & 035
 PLANNING CASE # PP26220, SUBSTANTIAL CONFORMANCE NO. 2



TITLE / OWNER

BUILDING DATA:
 BUILDING NAME: 80327
 DESIGNER: 2548 ST. / 100 S.
 ADDRESS: 100 S. 2548 ST. / 100 S.
 OFFICE: 100 S. 2548 ST.

PARKING DATA:

PARKING DATA:
 PARKING: 2548 ST. / 100 S.
 ADDRESS: 100 S. 2548 ST. / 100 S.
 TOTAL PARKING SPACES: 117 SPACES

LEGAL NOTES:

1. OWNER'S LEGAL IN THESE DOCUMENTS ARE FOR GENERAL REFERENCE ONLY. THE CONTRACTOR IS RESPONSIBLE FOR VERIFYING ALL DIMENSIONS FOR ROOM PURPOSES.

LEGAL DESCRIPTION:

ALL DIMENSIONS SHALL BE IN THE NUMBER OF FEET AND INCHES. ALL DIMENSIONS SHALL BE IN THE NUMBER OF FEET AND INCHES. ALL DIMENSIONS SHALL BE IN THE NUMBER OF FEET AND INCHES.

PROJECT DESCRIPTION:

REVISIONS OF THIS DOCUMENT TO INCLUDE THE FOLLOWING: REVISIONS TO INCLUDE THE FOLLOWING: REVISIONS TO INCLUDE THE FOLLOWING.

PROJECT INFORMATION

GENERAL NOTES:

1. OWNER'S LEGAL IN THESE DOCUMENTS ARE FOR GENERAL REFERENCE ONLY. THE CONTRACTOR IS RESPONSIBLE FOR VERIFYING ALL DIMENSIONS FOR ROOM PURPOSES.

SITE DATA:

EXTENSIVE MEASUREMENTS WERE TAKEN BY THE ARCHITECT. THE MEASUREMENTS WERE TAKEN BY THE ARCHITECT. THE MEASUREMENTS WERE TAKEN BY THE ARCHITECT.

PROJECT INFORMATION

REVISIONS OF THIS DOCUMENT TO INCLUDE THE FOLLOWING: REVISIONS TO INCLUDE THE FOLLOWING: REVISIONS TO INCLUDE THE FOLLOWING.

PROJECT INFORMATION

REVISIONS OF THIS DOCUMENT TO INCLUDE THE FOLLOWING: REVISIONS TO INCLUDE THE FOLLOWING: REVISIONS TO INCLUDE THE FOLLOWING.

PROJECT INFORMATION

REVISIONS OF THIS DOCUMENT TO INCLUDE THE FOLLOWING: REVISIONS TO INCLUDE THE FOLLOWING: REVISIONS TO INCLUDE THE FOLLOWING.

PROJECT INFORMATION

REVISIONS OF THIS DOCUMENT TO INCLUDE THE FOLLOWING: REVISIONS TO INCLUDE THE FOLLOWING: REVISIONS TO INCLUDE THE FOLLOWING.

PROJECT INFORMATION

REVISIONS OF THIS DOCUMENT TO INCLUDE THE FOLLOWING: REVISIONS TO INCLUDE THE FOLLOWING: REVISIONS TO INCLUDE THE FOLLOWING.

ABBREVIATIONS

1-1	1-1	1-1	1-1	1-1
1-2	1-2	1-2	1-2	1-2
1-3	1-3	1-3	1-3	1-3
1-4	1-4	1-4	1-4	1-4
1-5	1-5	1-5	1-5	1-5

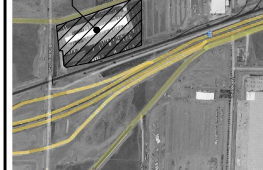
SYMBOLS

1-1	1-1	1-1	1-1	1-1
1-2	1-2	1-2	1-2	1-2
1-3	1-3	1-3	1-3	1-3
1-4	1-4	1-4	1-4	1-4
1-5	1-5	1-5	1-5	1-5

VICINITY MAP



LOCATION MAP



SHEET INDEX

1-1	1-1	1-1	1-1	1-1
1-2	1-2	1-2	1-2	1-2
1-3	1-3	1-3	1-3	1-3
1-4	1-4	1-4	1-4	1-4
1-5	1-5	1-5	1-5	1-5

DIRECTORY

1-1	1-1	1-1	1-1	1-1
1-2	1-2	1-2	1-2	1-2
1-3	1-3	1-3	1-3	1-3
1-4	1-4	1-4	1-4	1-4
1-5	1-5	1-5	1-5	1-5

DIRECTORY

1-1	1-1	1-1	1-1	1-1
1-2	1-2	1-2	1-2	1-2
1-3	1-3	1-3	1-3	1-3
1-4	1-4	1-4	1-4	1-4
1-5	1-5	1-5	1-5	1-5

DIRECTORY

1-1	1-1	1-1	1-1	1-1
1-2	1-2	1-2	1-2	1-2
1-3	1-3	1-3	1-3	1-3
1-4	1-4	1-4	1-4	1-4
1-5	1-5	1-5	1-5	1-5

DIRECTORY

1-1	1-1	1-1	1-1	1-1
1-2	1-2	1-2	1-2	1-2
1-3	1-3	1-3	1-3	1-3
1-4	1-4	1-4	1-4	1-4
1-5	1-5	1-5	1-5	1-5

OWNER
 FEDEX FREIGHT
 2200 FORWARD DRIVE, DC 2255
 HARRISON, ARKANSAS 72602
 PHONE: 801-790-7072
 FAX: 907-860-7555
 EMAIL: benkauffman@fedex.com

ARCHITECT
 MILLER ARCHITECTURAL CORPORATION
 1177 Idaho Street, Suite 200
 Redlands, CA 92374
 PHONE: 909-335-4400
 FAX: 909-335-7500
 EMAIL: sponshiller@mlcr.com

ELECTRICAL ENGINEER
 V&A ENGINEERING
 1423 W 93RD STREET, SUITE 102
 REDLANDS, CALIFORNIA 92374
 PHONE: 909-335-9400
 FAX: 909-335-9423
 EMAIL: vsp@va-engineering.com

CONTRACTOR
 PRINCE CONSTRUCTION, INC.
 1423 W 93RD STREET, SUITE 102
 REDLANDS, CALIFORNIA 92374
 PHONE: 909-335-9423
 FAX: 909-335-9423
 EMAIL: info@princeconstruction.com

REVISIONS/ADDENDA

MARK	DATE	DESCRIPTION
1	06/01/20	ISSUE
2	07/01/20	REVISION

OWNER APPROVAL

DATE: 06/01/20

REVISIONS/ADDENDA

DATE: 06/01/20

**FEDEX FREIGHT PERRIS
 SITE MAINTENANCE & STRIPING**
 20388 HARVILL AVENUE,
 PERRIS, CA 92570
 APN: 317-240-008-015, 013 & 035

FEDEX FREIGHT
 2200 FORWARD DRIVE, DC 2255
 HARRISON, ARKANSAS 72602
 CONTACT: BEN KAUFFMAN
 PHONE: 801-790-7072

TITLE SHEET

Sheet number: G-001

SHEET ### OF XX SHEETS

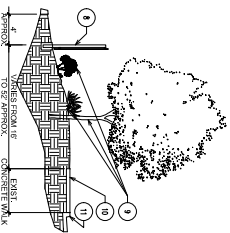
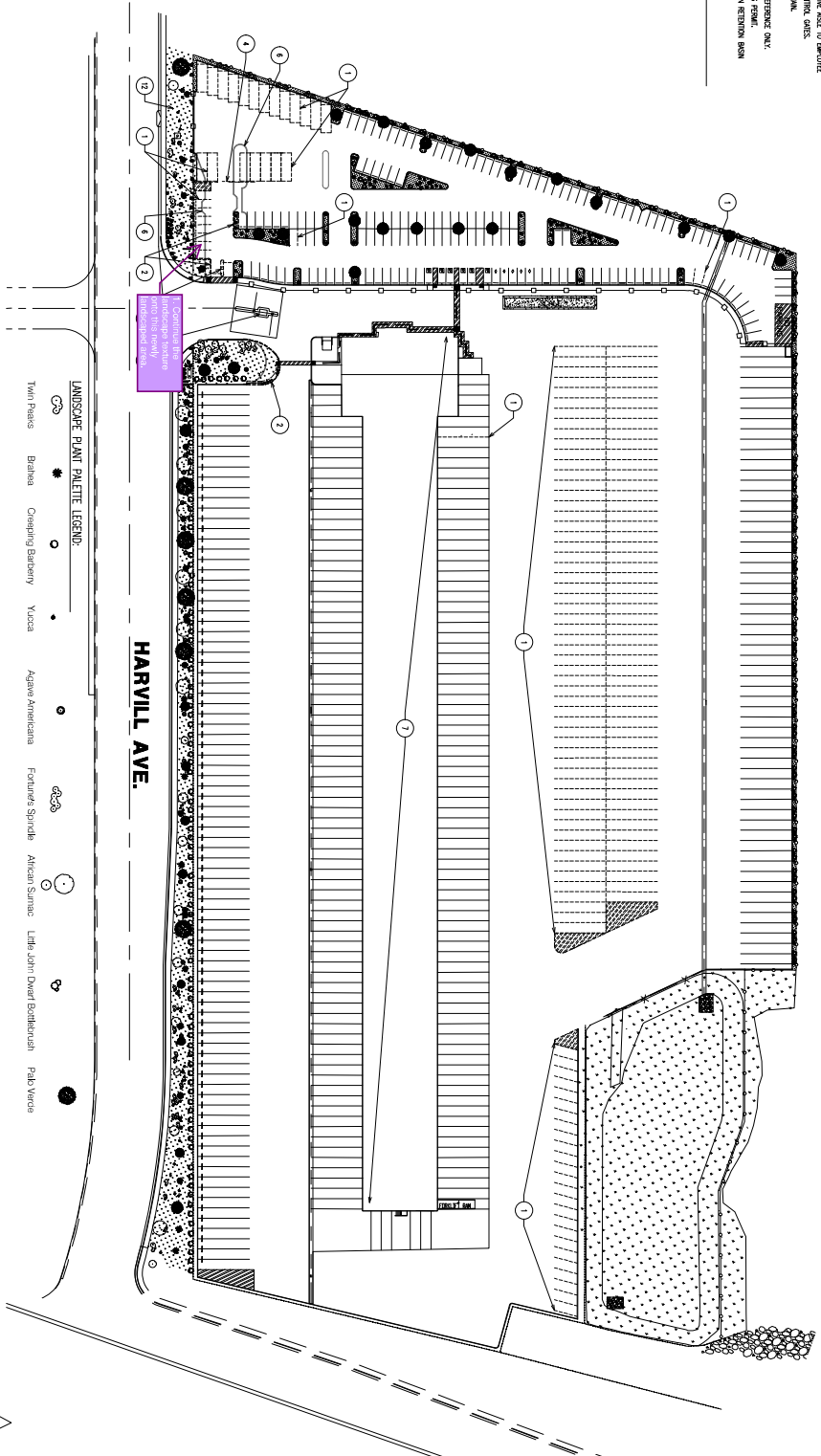
KEY NOTES:

1. REMOVE EXISTING STRIPING, MARKING STRIPING TO BE RECONSTRUCTED, SEE SECTION 101.
2. REMOVE EXISTING STRIPING, MARKING STRIPING TO BE RECONSTRUCTED, SEE SECTION 101.
3. REMOVE EXISTING STRIPING, MARKING STRIPING TO BE RECONSTRUCTED, SEE SECTION 101.
4. EXISTING LANDSCAPE & TRAFFIC CONTROL, CHECKS TO REMAIN.
5. NOT USED.
6. NEW DRIVE ASIDE CURB LANDSCAPE, SHOWN CORRELATED FOR REFERENCE ONLY.
7. EXISTING POOR BUILDINGS, NO NEW WORK AS PART OF THIS PHASE.
12. EXISTING BENCH TYPE IN ALL LANDSCAPE AREAS, EXCEPT RETENTION BASIN

SITE DATA:

1. SITE #/ ADDRESS: 01/04/01/ 2201 ASSES
2. LANDSCAPE #/ ADDRESS: 02/04/01/ 2201 ASSES
3. PARCEL # OF SITE: LANDSCAPE: 155

RCTC PROPERTY



KEYNOTES:

8. EXISTING RETAINING WALL, REMOVE TO EXPOSE
9. EXISTING CONCRETE SIDEWALK, REMOVE TO EXPOSE
10. EXISTING CONCRETE SIDEWALK, REMOVE TO EXPOSE
11. EXISTING CURB AND GUTTER TO REMAIN

EXISTING PHOTOS AND LANDSCAPE SECTION AT HARVILL AVE.

SCALE: 1" = 40'-0"

2

architecture interiors planning

MILLER

1177 Main Street, Suite 200
Redlands, CA 92374
Phone: (909) 352-7400
info@miller-llc.com



OWNER APPROVAL		
Initials	Date	
	09/09/00	
REVISIONS/ADDENDA		
mark	date	comment
	09/09/00	

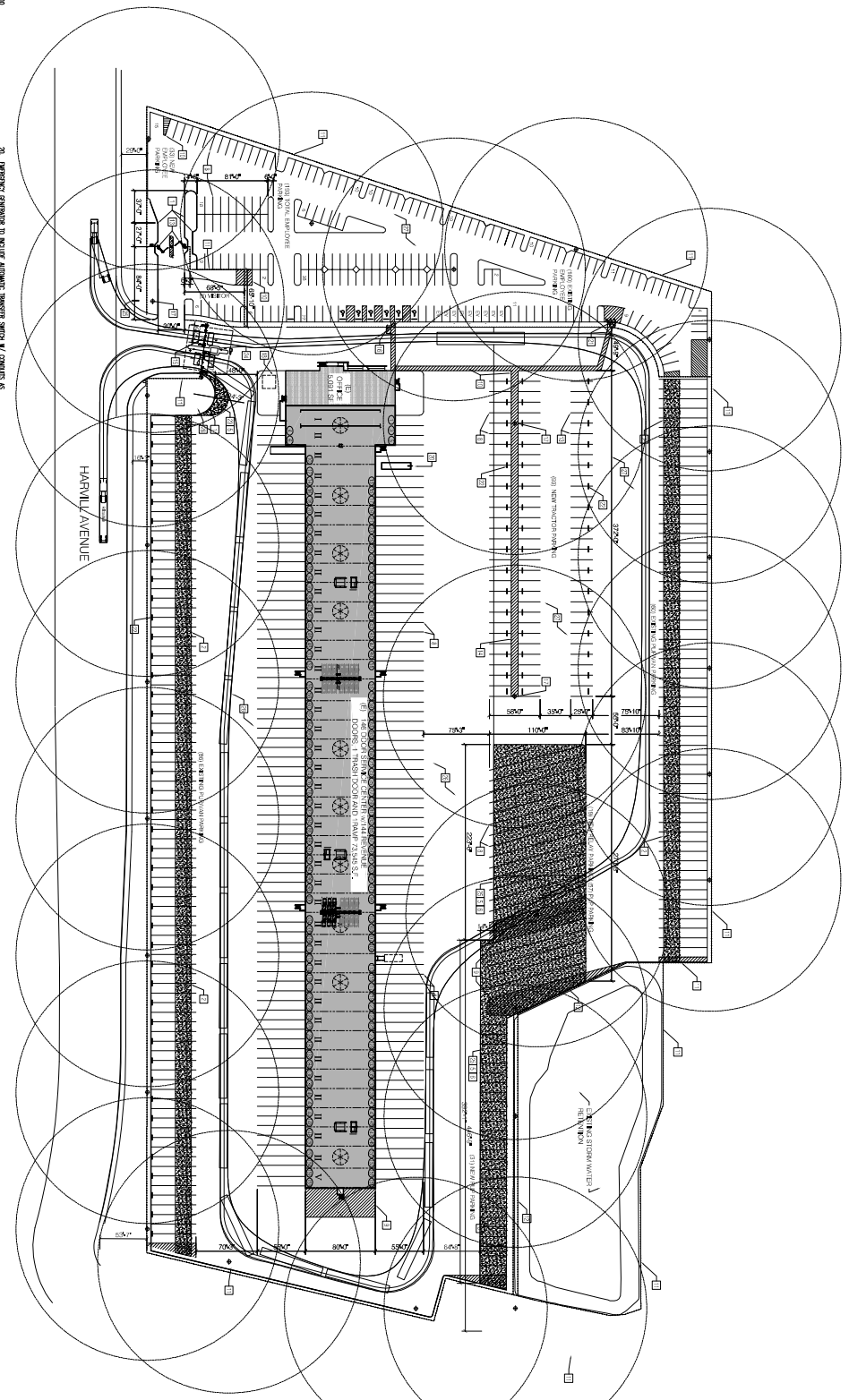
FEDEX FREIGHT PERRIS SITE MAINTENANCE & STRIPING
20388 HARVILL AVE.
PERRIS, CA 92570
APN: 317-240-008-015,013 & 035

FEDEX FREIGHT
2200 FORWARD DRIVE, DC 2255
HARRISON, ARKANSAS 72602
CONTACT: BEN KAUFFMAN
PHONE: 870-704-5012

PROJECT INFORMATION
PROJECT NO: 2200079RA
DRAWING TITLE: SITE PLAN EXIST-DEMOLING
DRAWN BY: SP/BA
CHECKED BY: SP
DRAWING SCALE: 1/8" = 1'-0"
DATE: 08/21/2023

SHEET name
SITE PLAN EXISTING & DEMOLITION
Sheet number: SD1.00

SHEET ### OF XX SHEETS

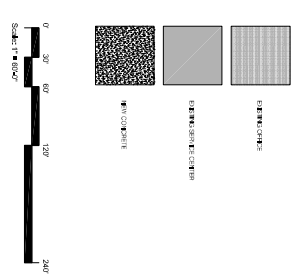


KEYNOTES

1. 1" WIDE PAVING CONC. SEE DET. 5/20/22
2. 4" WIDE CONC. DRIVE SEE DET. 4/20/22
3. 6" WIDE CONC. DRIVE SEE DET. 4/20/22
4. 12" WIDE CONC. DRIVE SEE DET. 4/20/22
5. 12" WIDE CONC. DRIVE SEE DET. 4/20/22
6. 12" WIDE CONC. DRIVE SEE DET. 4/20/22
7. 12" WIDE CONC. DRIVE SEE DET. 4/20/22
8. 12" WIDE CONC. DRIVE SEE DET. 4/20/22
9. 12" WIDE CONC. DRIVE SEE DET. 4/20/22
10. 12" WIDE CONC. DRIVE SEE DET. 4/20/22
11. 12" WIDE CONC. DRIVE SEE DET. 4/20/22
12. 12" WIDE CONC. DRIVE SEE DET. 4/20/22
13. 12" WIDE CONC. DRIVE SEE DET. 4/20/22
14. 12" WIDE CONC. DRIVE SEE DET. 4/20/22
15. 12" WIDE CONC. DRIVE SEE DET. 4/20/22
16. 12" WIDE CONC. DRIVE SEE DET. 4/20/22
17. 12" WIDE CONC. DRIVE SEE DET. 4/20/22
18. 12" WIDE CONC. DRIVE SEE DET. 4/20/22
19. 12" WIDE CONC. DRIVE SEE DET. 4/20/22
20. 12" WIDE CONC. DRIVE SEE DET. 4/20/22
21. 12" WIDE CONC. DRIVE SEE DET. 4/20/22
22. 12" WIDE CONC. DRIVE SEE DET. 4/20/22
23. 12" WIDE CONC. DRIVE SEE DET. 4/20/22
24. 12" WIDE CONC. DRIVE SEE DET. 4/20/22
25. 12" WIDE CONC. DRIVE SEE DET. 4/20/22
26. 12" WIDE CONC. DRIVE SEE DET. 4/20/22
27. 12" WIDE CONC. DRIVE SEE DET. 4/20/22
28. 12" WIDE CONC. DRIVE SEE DET. 4/20/22
29. 12" WIDE CONC. DRIVE SEE DET. 4/20/22
30. 12" WIDE CONC. DRIVE SEE DET. 4/20/22
31. 12" WIDE CONC. DRIVE SEE DET. 4/20/22
32. 12" WIDE CONC. DRIVE SEE DET. 4/20/22
33. 12" WIDE CONC. DRIVE SEE DET. 4/20/22
34. 12" WIDE CONC. DRIVE SEE DET. 4/20/22
35. 12" WIDE CONC. DRIVE SEE DET. 4/20/22
36. 12" WIDE CONC. DRIVE SEE DET. 4/20/22
37. 12" WIDE CONC. DRIVE SEE DET. 4/20/22
38. 12" WIDE CONC. DRIVE SEE DET. 4/20/22
39. 12" WIDE CONC. DRIVE SEE DET. 4/20/22
40. 12" WIDE CONC. DRIVE SEE DET. 4/20/22
41. 12" WIDE CONC. DRIVE SEE DET. 4/20/22
42. 12" WIDE CONC. DRIVE SEE DET. 4/20/22
43. 12" WIDE CONC. DRIVE SEE DET. 4/20/22
44. 12" WIDE CONC. DRIVE SEE DET. 4/20/22
45. 12" WIDE CONC. DRIVE SEE DET. 4/20/22
46. 12" WIDE CONC. DRIVE SEE DET. 4/20/22
47. 12" WIDE CONC. DRIVE SEE DET. 4/20/22
48. 12" WIDE CONC. DRIVE SEE DET. 4/20/22
49. 12" WIDE CONC. DRIVE SEE DET. 4/20/22
50. 12" WIDE CONC. DRIVE SEE DET. 4/20/22

GATE SCHEDULE

70. 12" WIDE CONC. DRIVE SEE DET. 4/20/22
71. 12" WIDE CONC. DRIVE SEE DET. 4/20/22
72. 12" WIDE CONC. DRIVE SEE DET. 4/20/22
73. 12" WIDE CONC. DRIVE SEE DET. 4/20/22
74. 12" WIDE CONC. DRIVE SEE DET. 4/20/22
75. 12" WIDE CONC. DRIVE SEE DET. 4/20/22
76. 12" WIDE CONC. DRIVE SEE DET. 4/20/22
77. 12" WIDE CONC. DRIVE SEE DET. 4/20/22
78. 12" WIDE CONC. DRIVE SEE DET. 4/20/22
79. 12" WIDE CONC. DRIVE SEE DET. 4/20/22
80. 12" WIDE CONC. DRIVE SEE DET. 4/20/22
81. 12" WIDE CONC. DRIVE SEE DET. 4/20/22
82. 12" WIDE CONC. DRIVE SEE DET. 4/20/22
83. 12" WIDE CONC. DRIVE SEE DET. 4/20/22
84. 12" WIDE CONC. DRIVE SEE DET. 4/20/22
85. 12" WIDE CONC. DRIVE SEE DET. 4/20/22
86. 12" WIDE CONC. DRIVE SEE DET. 4/20/22
87. 12" WIDE CONC. DRIVE SEE DET. 4/20/22
88. 12" WIDE CONC. DRIVE SEE DET. 4/20/22
89. 12" WIDE CONC. DRIVE SEE DET. 4/20/22
90. 12" WIDE CONC. DRIVE SEE DET. 4/20/22
91. 12" WIDE CONC. DRIVE SEE DET. 4/20/22
92. 12" WIDE CONC. DRIVE SEE DET. 4/20/22
93. 12" WIDE CONC. DRIVE SEE DET. 4/20/22
94. 12" WIDE CONC. DRIVE SEE DET. 4/20/22
95. 12" WIDE CONC. DRIVE SEE DET. 4/20/22
96. 12" WIDE CONC. DRIVE SEE DET. 4/20/22
97. 12" WIDE CONC. DRIVE SEE DET. 4/20/22
98. 12" WIDE CONC. DRIVE SEE DET. 4/20/22
99. 12" WIDE CONC. DRIVE SEE DET. 4/20/22
100. 12" WIDE CONC. DRIVE SEE DET. 4/20/22



SITE DEVELOPMENT PLAN

Scale: 1" = 40'-0"

1

architecture
interiors
planning

MILLER

1177 Idaho Street, Suite 200
Redlands, CA 92374
Phone: (909) 335-7400
info@mlle-arch.com

OWNER APPROVAL

Ben Kauffman
10/10/2023

REVISIONS/ADDENDUM

mark	date	comment
1	09/09/20	

FEDEX FREIGHT PERRIS
SITE MAINTENANCE & STRIPING

20368 HARVILL AVE.
PERRIS, CA 92570
APN: 317-240-008-015.013 & 035

FEDEX FREIGHT
2200 FORWARD DRIVE, DC 2255
HARRISON, ARKANSAS 72602
CONTACT: BEN KAUFFMAN
PHONE: 870-704-5012

PROJECT INFORMATION

PROJECT NO: 2200079RA
DRAWN BY: SP/BA
CHECKED BY: SP
DRAWING SCALE: 08/21/2023

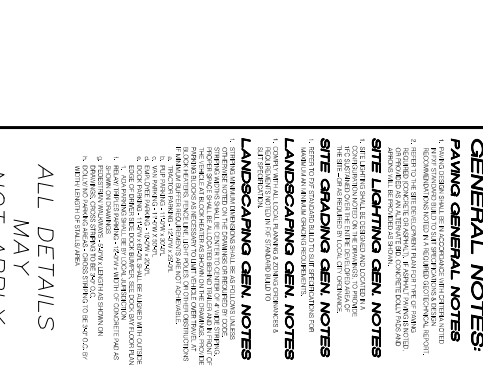
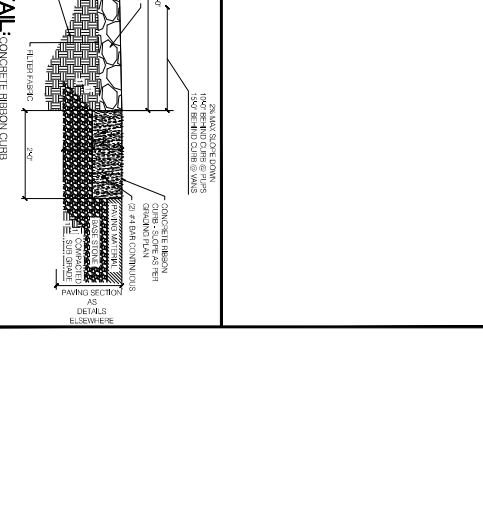
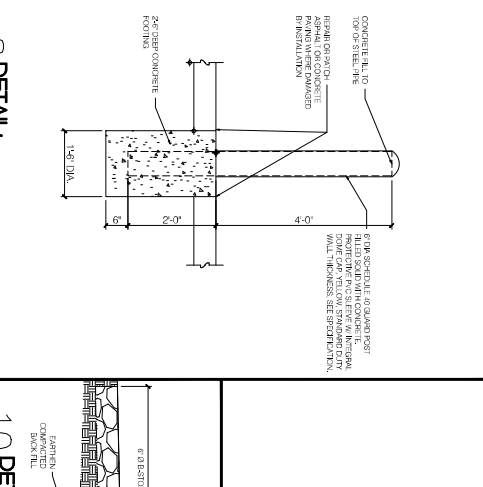
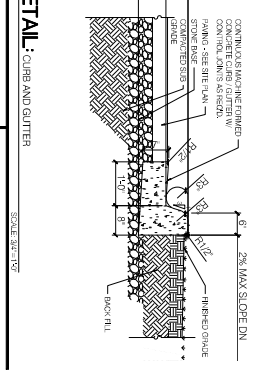
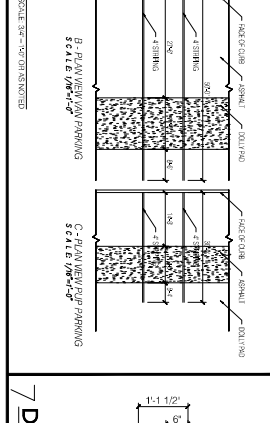
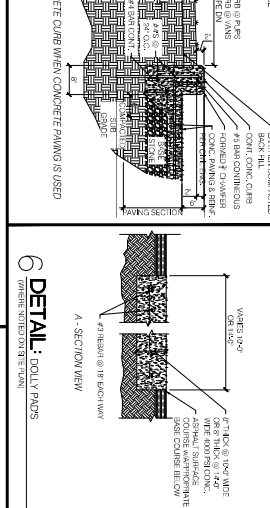
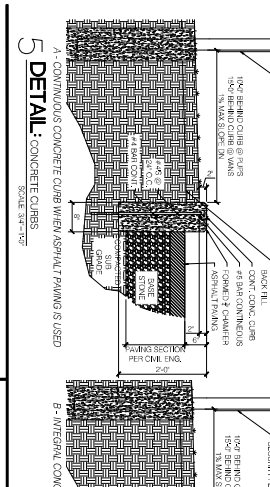
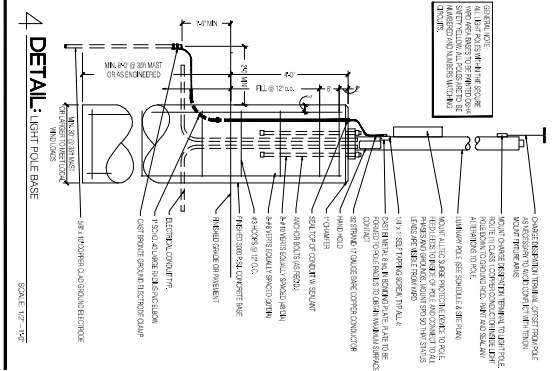
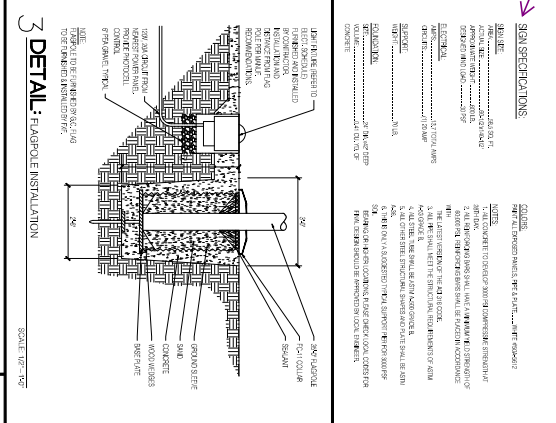
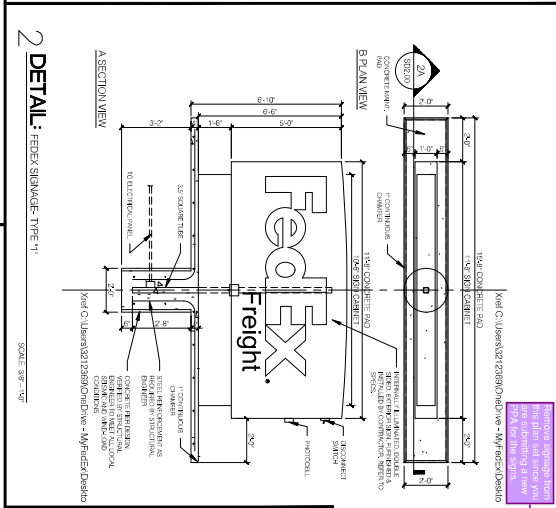
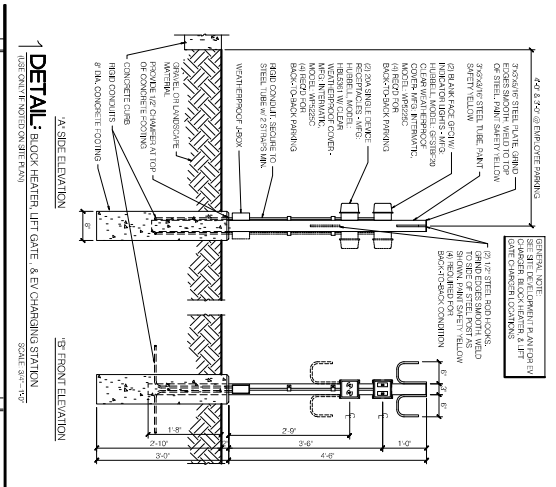
SHEET NAME

SITE DEVELOPMENT PLAN

SHEET NUMBER

SD1.01

SHEET ### OF XX SHEETS



8 DETAIL: ISOLATED DETAIL
10 DETAIL: CONCRETE FIBERON CURBS
11 DETAIL: CONCRETE FIBERON CURBS
12 DETAIL: CONCRETE FIBERON CURBS
13 DETAIL: CONCRETE FIBERON CURBS

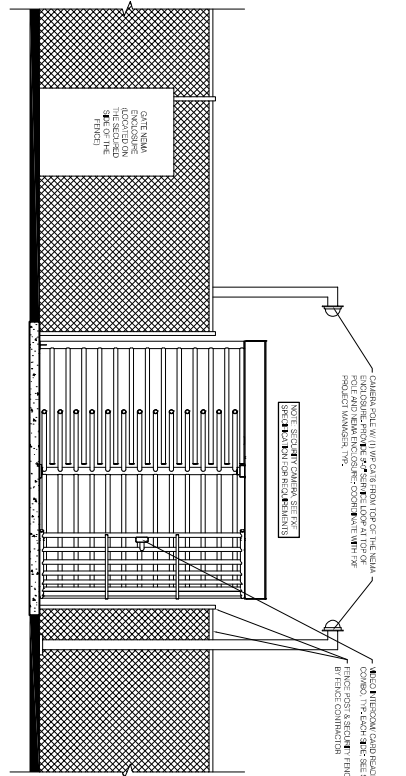
GENERAL NOTES:
PAVING GENERAL NOTES
SITE LIGHTING GEN NOTES
SITE GRADING GEN NOTES
LANDSCAPING GEN NOTES

MISCELLANEOUS SITE DETAILS
sheet number SD2.00
Project Information: FEDEX FREIGHT PERRIS SITE MAINTENANCE & STRIPING
20388 HARVILL AVE. PERRIS, CA 92570
APN: 317-240-008-015.013 & 035
FEDEX FREIGHT 2200 FORWARD DRIVE, DC 2255 HARRISON, ARKANSAS 72602
CONTACT: BEN KAUFFMAN PHONE: 870-704-5012

MILLER
architecture
interiors
planning
1177 Keano Street, Suite 200
Redlands, CA 92374
Phone: (909) 355-7299
info@mlr-pp.com

OWNER APPROVAL
MILLER ARCHITECTURAL CORPORATION
SERGIO PERA
DATE: 08/20/2023

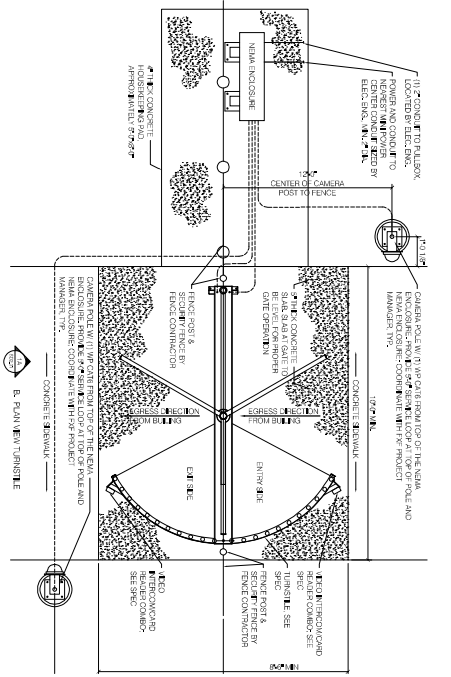
REVISIONS/ADDENDA
DATE: 08/20/2023
BY: [Signature]



1 DETAIL: TURNSTILE

SCALE: 1/4" = 1'-0"

1/4 ELEVATION VIEW



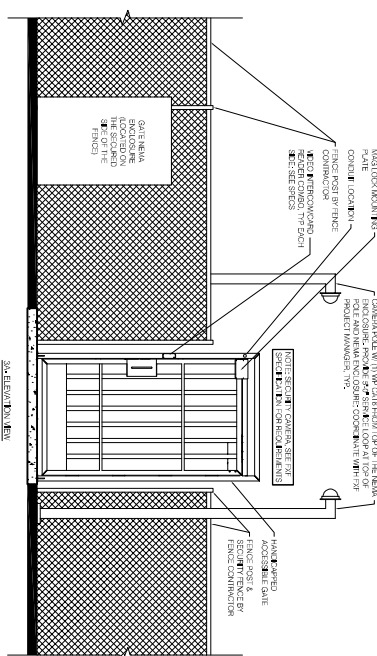
2 DETAIL: TURNSTILE

- GENERAL NOTES:**
- CONSTRUCTION SHALL BE IN ACCORDANCE WITH THE LATEST EDITIONS OF THE FOLLOWING:
 - A. CONSTRUCTION MANUAL
 - B. CONCRETE MANUAL
 - C. METAL FABRICATION MANUAL
 - D. WOODWORKING MANUAL
 - E. PAINTING MANUAL
 - F. ELECTRICAL MANUAL
 - G. MECHANICAL MANUAL
 - H. PLUMBING MANUAL
 - I. ROOFING MANUAL
 - J. FINISHES MANUAL
 - K. GLASS AND GLAZING MANUAL
 - L. IRON AND STEEL MANUAL
 - M. MASONRY MANUAL
 - N. MECHANICAL INSULATION MANUAL
 - O. PAVEMENT MANUAL
 - P. SIGNAGE MANUAL
 - Q. SPECIALTIES MANUAL
 - R. TENDRONS MANUAL
 - S. WOODWORKING MANUAL
 - T. WOOD PRESERVATION MANUAL
 - U. WOOD FINISHES MANUAL
 - V. WOOD JOINTS MANUAL
 - W. WOOD TRIM MANUAL
 - X. WOODWORKING MANUAL
 - Y. WOODWORKING MANUAL
 - Z. WOODWORKING MANUAL
 - ALL MATERIALS SHALL BE APPROVED BY THE ARCHITECT PRIOR TO INSTALLATION.
 - ALL MATERIALS SHALL BE INSTALLED IN ACCORDANCE WITH THE MANUFACTURER'S INSTRUCTIONS.
 - ALL MATERIALS SHALL BE INSTALLED IN ACCORDANCE WITH THE LATEST EDITIONS OF THE FOLLOWING:
 - A. CONSTRUCTION MANUAL
 - B. CONCRETE MANUAL
 - C. METAL FABRICATION MANUAL
 - D. WOODWORKING MANUAL
 - E. PAINTING MANUAL
 - F. ELECTRICAL MANUAL
 - G. MECHANICAL MANUAL
 - H. PLUMBING MANUAL
 - I. ROOFING MANUAL
 - J. FINISHES MANUAL
 - K. GLASS AND GLAZING MANUAL
 - L. IRON AND STEEL MANUAL
 - M. MASONRY MANUAL
 - N. MECHANICAL INSULATION MANUAL
 - O. PAVEMENT MANUAL
 - P. SIGNAGE MANUAL
 - Q. SPECIALTIES MANUAL
 - R. TENDRONS MANUAL
 - S. WOODWORKING MANUAL
 - T. WOOD PRESERVATION MANUAL
 - U. WOOD FINISHES MANUAL
 - V. WOODWORKING MANUAL
 - W. WOODWORKING MANUAL
 - X. WOODWORKING MANUAL
 - Y. WOODWORKING MANUAL
 - Z. WOODWORKING MANUAL
 - ALL MATERIALS SHALL BE APPROVED BY THE ARCHITECT PRIOR TO INSTALLATION.
 - ALL MATERIALS SHALL BE INSTALLED IN ACCORDANCE WITH THE MANUFACTURER'S INSTRUCTIONS.

2 DETAIL: TURNSTILE & HANDBAR GATE

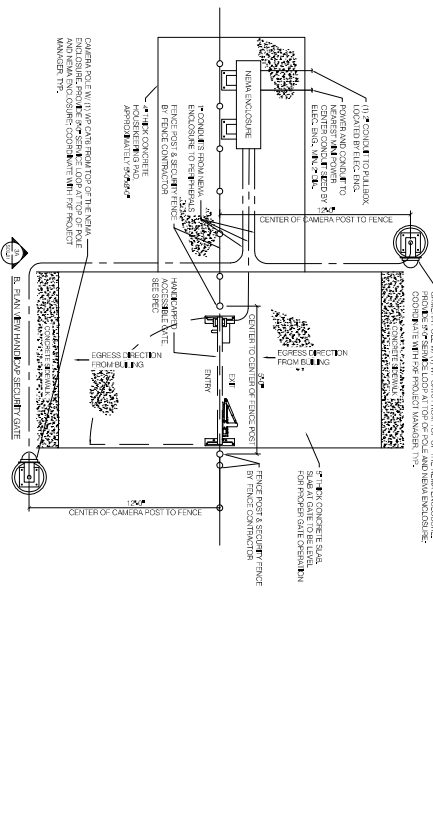
SCALE: 1/4" = 1'-0"

3/4 ELEVATION VIEW



3 DETAIL: HANDBAR GATE

SCALE: 1/4" = 1'-0"



FEDEX FREIGHT PERRIS SITE MAINTENANCE & STRIPING
 20388 HARVILL AVE.
 PERRIS, CA 92570
 APN: 317-249-008-015.013 & 035

FEDEX FREIGHT
 2200 FORWARD DRIVE, DC 2255
 HARRISON, ARKANSAS 72602
 CONTACT: BEN KAUFFMAN
 PHONE: 870-704-5012

PROJECT INFORMATION
 PROJECT NO: Z200079JRA
 DWG FILE: SP/BA
 DRAWN BY: BT
 CHECKED BY: BT
 DRAWING SCALE: AS NOTED
 DATE: 08/21/2023

Sheet name
 SECURITY TURNSTILE DETAILS

Sheet number
 SD2.01

SHEET ### OF XX SHEETS

owner approval

revisions/addenda

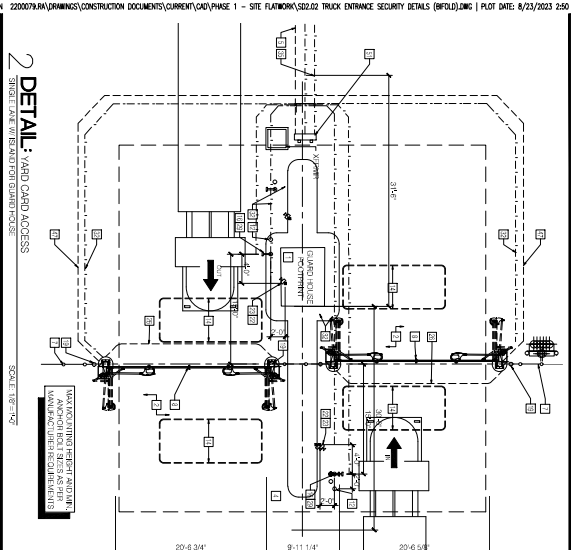
no.	date	description
1	08/21/23	ISSUED FOR PERMIT
2	08/21/23	ISSUED FOR PERMIT
3	08/21/23	ISSUED FOR PERMIT
4	08/21/23	ISSUED FOR PERMIT
5	08/21/23	ISSUED FOR PERMIT
6	08/21/23	ISSUED FOR PERMIT
7	08/21/23	ISSUED FOR PERMIT
8	08/21/23	ISSUED FOR PERMIT
9	08/21/23	ISSUED FOR PERMIT
10	08/21/23	ISSUED FOR PERMIT

owner approval

1177 Main Street, Suite 200
 Redlands, CA 92374
 Phone: (909) 335-1400
 Info@millar.com

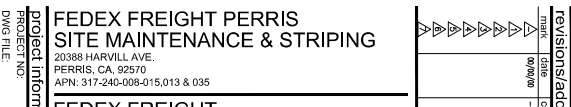
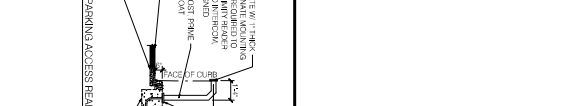
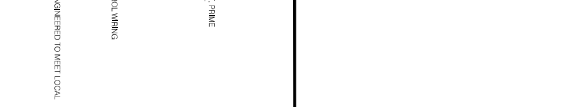
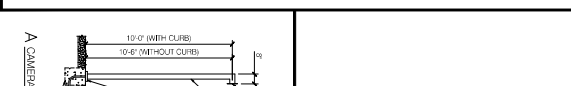
architecture
interiors
planning

MILLER



2 DETAIL: YARD CARD ACCESS
SCALE: 1/8"=1'-0"

- KEYED NOTES - SITE SECURITY**
1. NOT USED
 2. PROVIDE POWER AND CONDUIT TO MAIN POWER CENTER, CONDUIT SET BY ELECT.
 3. CONDUIT TO BE INSTALLED FOR POWER OUT EXPOSURE
 4. PROVIDE POWER AND CONDUIT TO MAIN POWER CENTER, CONDUIT SET BY ELECT.
 5. PROVIDE POWER AND CONDUIT TO MAIN POWER CENTER, CONDUIT SET BY ELECT.
 6. CONDUIT TO BE INSTALLED FOR POWER OUT EXPOSURE
 7. CONDUIT TO BE INSTALLED FOR POWER OUT EXPOSURE
 8. CONDUIT TO BE INSTALLED FOR POWER OUT EXPOSURE
 9. CONDUIT TO BE INSTALLED FOR POWER OUT EXPOSURE
 10. CONDUIT TO BE INSTALLED FOR POWER OUT EXPOSURE
 11. CONDUIT TO BE INSTALLED FOR POWER OUT EXPOSURE
 12. CONDUIT TO BE INSTALLED FOR POWER OUT EXPOSURE
 13. CONDUIT TO BE INSTALLED FOR POWER OUT EXPOSURE
 14. CONDUIT TO BE INSTALLED FOR POWER OUT EXPOSURE
 15. CONDUIT TO BE INSTALLED FOR POWER OUT EXPOSURE
 16. CONDUIT TO BE INSTALLED FOR POWER OUT EXPOSURE
 17. CONDUIT TO BE INSTALLED FOR POWER OUT EXPOSURE
 18. CONDUIT TO BE INSTALLED FOR POWER OUT EXPOSURE
 19. CONDUIT TO BE INSTALLED FOR POWER OUT EXPOSURE
 20. CONDUIT TO BE INSTALLED FOR POWER OUT EXPOSURE
 21. CONDUIT TO BE INSTALLED FOR POWER OUT EXPOSURE
 22. CONDUIT TO BE INSTALLED FOR POWER OUT EXPOSURE
 23. CONDUIT TO BE INSTALLED FOR POWER OUT EXPOSURE
 24. CONDUIT TO BE INSTALLED FOR POWER OUT EXPOSURE
 25. CONDUIT TO BE INSTALLED FOR POWER OUT EXPOSURE
 26. CONDUIT TO BE INSTALLED FOR POWER OUT EXPOSURE
 27. CONDUIT TO BE INSTALLED FOR POWER OUT EXPOSURE
 28. CONDUIT TO BE INSTALLED FOR POWER OUT EXPOSURE
 29. CONDUIT TO BE INSTALLED FOR POWER OUT EXPOSURE
 30. CONDUIT TO BE INSTALLED FOR POWER OUT EXPOSURE
 31. CONDUIT TO BE INSTALLED FOR POWER OUT EXPOSURE
 32. CONDUIT TO BE INSTALLED FOR POWER OUT EXPOSURE
 33. CONDUIT TO BE INSTALLED FOR POWER OUT EXPOSURE
 34. CONDUIT TO BE INSTALLED FOR POWER OUT EXPOSURE
 35. CONDUIT TO BE INSTALLED FOR POWER OUT EXPOSURE
 36. CONDUIT TO BE INSTALLED FOR POWER OUT EXPOSURE
 37. CONDUIT TO BE INSTALLED FOR POWER OUT EXPOSURE
 38. CONDUIT TO BE INSTALLED FOR POWER OUT EXPOSURE
 39. CONDUIT TO BE INSTALLED FOR POWER OUT EXPOSURE
 40. CONDUIT TO BE INSTALLED FOR POWER OUT EXPOSURE
 41. CONDUIT TO BE INSTALLED FOR POWER OUT EXPOSURE
 42. CONDUIT TO BE INSTALLED FOR POWER OUT EXPOSURE
 43. CONDUIT TO BE INSTALLED FOR POWER OUT EXPOSURE
 44. CONDUIT TO BE INSTALLED FOR POWER OUT EXPOSURE
 45. CONDUIT TO BE INSTALLED FOR POWER OUT EXPOSURE
 46. CONDUIT TO BE INSTALLED FOR POWER OUT EXPOSURE
 47. CONDUIT TO BE INSTALLED FOR POWER OUT EXPOSURE
 48. CONDUIT TO BE INSTALLED FOR POWER OUT EXPOSURE
 49. CONDUIT TO BE INSTALLED FOR POWER OUT EXPOSURE
 50. CONDUIT TO BE INSTALLED FOR POWER OUT EXPOSURE
 51. CONDUIT TO BE INSTALLED FOR POWER OUT EXPOSURE
 52. CONDUIT TO BE INSTALLED FOR POWER OUT EXPOSURE
 53. CONDUIT TO BE INSTALLED FOR POWER OUT EXPOSURE
 54. CONDUIT TO BE INSTALLED FOR POWER OUT EXPOSURE
 55. CONDUIT TO BE INSTALLED FOR POWER OUT EXPOSURE
 56. CONDUIT TO BE INSTALLED FOR POWER OUT EXPOSURE
 57. CONDUIT TO BE INSTALLED FOR POWER OUT EXPOSURE
 58. CONDUIT TO BE INSTALLED FOR POWER OUT EXPOSURE
 59. CONDUIT TO BE INSTALLED FOR POWER OUT EXPOSURE
 60. CONDUIT TO BE INSTALLED FOR POWER OUT EXPOSURE
 61. CONDUIT TO BE INSTALLED FOR POWER OUT EXPOSURE
 62. CONDUIT TO BE INSTALLED FOR POWER OUT EXPOSURE
 63. CONDUIT TO BE INSTALLED FOR POWER OUT EXPOSURE
 64. CONDUIT TO BE INSTALLED FOR POWER OUT EXPOSURE
 65. CONDUIT TO BE INSTALLED FOR POWER OUT EXPOSURE
 66. CONDUIT TO BE INSTALLED FOR POWER OUT EXPOSURE
 67. CONDUIT TO BE INSTALLED FOR POWER OUT EXPOSURE
 68. CONDUIT TO BE INSTALLED FOR POWER OUT EXPOSURE
 69. CONDUIT TO BE INSTALLED FOR POWER OUT EXPOSURE
 70. CONDUIT TO BE INSTALLED FOR POWER OUT EXPOSURE
 71. CONDUIT TO BE INSTALLED FOR POWER OUT EXPOSURE
 72. CONDUIT TO BE INSTALLED FOR POWER OUT EXPOSURE
 73. CONDUIT TO BE INSTALLED FOR POWER OUT EXPOSURE
 74. CONDUIT TO BE INSTALLED FOR POWER OUT EXPOSURE
 75. CONDUIT TO BE INSTALLED FOR POWER OUT EXPOSURE
 76. CONDUIT TO BE INSTALLED FOR POWER OUT EXPOSURE
 77. CONDUIT TO BE INSTALLED FOR POWER OUT EXPOSURE
 78. CONDUIT TO BE INSTALLED FOR POWER OUT EXPOSURE
 79. CONDUIT TO BE INSTALLED FOR POWER OUT EXPOSURE
 80. CONDUIT TO BE INSTALLED FOR POWER OUT EXPOSURE
 81. CONDUIT TO BE INSTALLED FOR POWER OUT EXPOSURE
 82. CONDUIT TO BE INSTALLED FOR POWER OUT EXPOSURE
 83. CONDUIT TO BE INSTALLED FOR POWER OUT EXPOSURE
 84. CONDUIT TO BE INSTALLED FOR POWER OUT EXPOSURE
 85. CONDUIT TO BE INSTALLED FOR POWER OUT EXPOSURE
 86. CONDUIT TO BE INSTALLED FOR POWER OUT EXPOSURE
 87. CONDUIT TO BE INSTALLED FOR POWER OUT EXPOSURE
 88. CONDUIT TO BE INSTALLED FOR POWER OUT EXPOSURE
 89. CONDUIT TO BE INSTALLED FOR POWER OUT EXPOSURE
 90. CONDUIT TO BE INSTALLED FOR POWER OUT EXPOSURE
 91. CONDUIT TO BE INSTALLED FOR POWER OUT EXPOSURE
 92. CONDUIT TO BE INSTALLED FOR POWER OUT EXPOSURE
 93. CONDUIT TO BE INSTALLED FOR POWER OUT EXPOSURE
 94. CONDUIT TO BE INSTALLED FOR POWER OUT EXPOSURE
 95. CONDUIT TO BE INSTALLED FOR POWER OUT EXPOSURE
 96. CONDUIT TO BE INSTALLED FOR POWER OUT EXPOSURE
 97. CONDUIT TO BE INSTALLED FOR POWER OUT EXPOSURE
 98. CONDUIT TO BE INSTALLED FOR POWER OUT EXPOSURE
 99. CONDUIT TO BE INSTALLED FOR POWER OUT EXPOSURE
 100. CONDUIT TO BE INSTALLED FOR POWER OUT EXPOSURE



FEDEX FREIGHT PERRIS
SITE MAINTENANCE & STRIPING
 20388 HARVILL AVE.
 PERRIS, CA 92570
 APN: 317-240-008-015.013 & 035

FEDEX FREIGHT
 2200 FORWARD DRIVE, DC 2255
 HARRISON, ARKANSAS 72602
 CONTACT: BEN KAUFFMAN
 PHONE: 870-704-5012

OWNER APPROVAL

Initials	Date	Press
	08/20/20	

REVISIONS/ADDENDA

mark	date	comment
	08/20/20	

PROJECT INFORMATION

PROJECT NO: 2200079RA
 DWG TITLE: TRUCK ENTRANCE SECURITY DETAILS
 DRAWN BY: SP/BA
 DATE: 08/21/2023

sheet name
 TRUCK ENTRANCE SECURITY DETAILS

sheet number
 SD2.02

Sheet number of xx sheets
 SD2.02

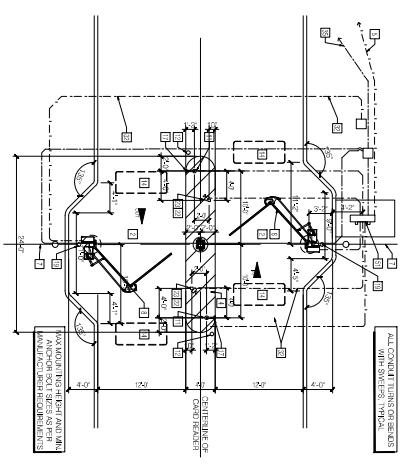
1177 Idaho Street, Suite 200
 Redlands, CA 92374
 Phone: (909) 353-7400
 info@miller-llp.com

architecture
interiors
planning

MILLER

4 EMPLOYEE VEHICLE ENTRANCE WITH BI-FOLD GATES

SCALE: 1/8" = 1'-0"



2 NOT USED

5 NOT USED

6 NOT USED

KEYED NOTES - SITE SECURITY

1. NOT USED
2. NOT USED
3. NOT USED
4. NOT USED
5. REMOVE CHAIR & CONDUIT TO NEW POWER CENTER. CHAIR SEE BY ELEC.
6. REMOVE CHAIR & CONDUIT TO NEW POWER CENTER. CHAIR SEE BY ELEC.
7. REMOVE CHAIR & CONDUIT TO NEW POWER CENTER. CHAIR SEE BY ELEC.
8. REMOVE CHAIR & CONDUIT TO NEW POWER CENTER. CHAIR SEE BY ELEC.
9. REMOVE CHAIR & CONDUIT TO NEW POWER CENTER. CHAIR SEE BY ELEC.
10. REMOVE CHAIR & CONDUIT TO NEW POWER CENTER. CHAIR SEE BY ELEC.
11. REMOVE CHAIR & CONDUIT TO NEW POWER CENTER. CHAIR SEE BY ELEC.
12. REMOVE CHAIR & CONDUIT TO NEW POWER CENTER. CHAIR SEE BY ELEC.
13. REMOVE CHAIR & CONDUIT TO NEW POWER CENTER. CHAIR SEE BY ELEC.
14. REMOVE CHAIR & CONDUIT TO NEW POWER CENTER. CHAIR SEE BY ELEC.
15. REMOVE CHAIR & CONDUIT TO NEW POWER CENTER. CHAIR SEE BY ELEC.
16. REMOVE CHAIR & CONDUIT TO NEW POWER CENTER. CHAIR SEE BY ELEC.
17. REMOVE CHAIR & CONDUIT TO NEW POWER CENTER. CHAIR SEE BY ELEC.
18. REMOVE CHAIR & CONDUIT TO NEW POWER CENTER. CHAIR SEE BY ELEC.
19. REMOVE CHAIR & CONDUIT TO NEW POWER CENTER. CHAIR SEE BY ELEC.
20. REMOVE CHAIR & CONDUIT TO NEW POWER CENTER. CHAIR SEE BY ELEC.
21. REMOVE CHAIR & CONDUIT TO NEW POWER CENTER. CHAIR SEE BY ELEC.
22. REMOVE CHAIR & CONDUIT TO NEW POWER CENTER. CHAIR SEE BY ELEC.
23. REMOVE CHAIR & CONDUIT TO NEW POWER CENTER. CHAIR SEE BY ELEC.
24. REMOVE CHAIR & CONDUIT TO NEW POWER CENTER. CHAIR SEE BY ELEC.
25. REMOVE CHAIR & CONDUIT TO NEW POWER CENTER. CHAIR SEE BY ELEC.
26. REMOVE CHAIR & CONDUIT TO NEW POWER CENTER. CHAIR SEE BY ELEC.
27. REMOVE CHAIR & CONDUIT TO NEW POWER CENTER. CHAIR SEE BY ELEC.
28. REMOVE CHAIR & CONDUIT TO NEW POWER CENTER. CHAIR SEE BY ELEC.
29. REMOVE CHAIR & CONDUIT TO NEW POWER CENTER. CHAIR SEE BY ELEC.
30. REMOVE CHAIR & CONDUIT TO NEW POWER CENTER. CHAIR SEE BY ELEC.
31. REMOVE CHAIR & CONDUIT TO NEW POWER CENTER. CHAIR SEE BY ELEC.
32. REMOVE CHAIR & CONDUIT TO NEW POWER CENTER. CHAIR SEE BY ELEC.
33. REMOVE CHAIR & CONDUIT TO NEW POWER CENTER. CHAIR SEE BY ELEC.
34. REMOVE CHAIR & CONDUIT TO NEW POWER CENTER. CHAIR SEE BY ELEC.
35. REMOVE CHAIR & CONDUIT TO NEW POWER CENTER. CHAIR SEE BY ELEC.
36. REMOVE CHAIR & CONDUIT TO NEW POWER CENTER. CHAIR SEE BY ELEC.
37. REMOVE CHAIR & CONDUIT TO NEW POWER CENTER. CHAIR SEE BY ELEC.
38. REMOVE CHAIR & CONDUIT TO NEW POWER CENTER. CHAIR SEE BY ELEC.
39. REMOVE CHAIR & CONDUIT TO NEW POWER CENTER. CHAIR SEE BY ELEC.
40. REMOVE CHAIR & CONDUIT TO NEW POWER CENTER. CHAIR SEE BY ELEC.
41. REMOVE CHAIR & CONDUIT TO NEW POWER CENTER. CHAIR SEE BY ELEC.
42. REMOVE CHAIR & CONDUIT TO NEW POWER CENTER. CHAIR SEE BY ELEC.
43. REMOVE CHAIR & CONDUIT TO NEW POWER CENTER. CHAIR SEE BY ELEC.
44. REMOVE CHAIR & CONDUIT TO NEW POWER CENTER. CHAIR SEE BY ELEC.
45. REMOVE CHAIR & CONDUIT TO NEW POWER CENTER. CHAIR SEE BY ELEC.
46. REMOVE CHAIR & CONDUIT TO NEW POWER CENTER. CHAIR SEE BY ELEC.
47. REMOVE CHAIR & CONDUIT TO NEW POWER CENTER. CHAIR SEE BY ELEC.
48. REMOVE CHAIR & CONDUIT TO NEW POWER CENTER. CHAIR SEE BY ELEC.
49. REMOVE CHAIR & CONDUIT TO NEW POWER CENTER. CHAIR SEE BY ELEC.
50. REMOVE CHAIR & CONDUIT TO NEW POWER CENTER. CHAIR SEE BY ELEC.
51. REMOVE CHAIR & CONDUIT TO NEW POWER CENTER. CHAIR SEE BY ELEC.
52. REMOVE CHAIR & CONDUIT TO NEW POWER CENTER. CHAIR SEE BY ELEC.
53. REMOVE CHAIR & CONDUIT TO NEW POWER CENTER. CHAIR SEE BY ELEC.
54. REMOVE CHAIR & CONDUIT TO NEW POWER CENTER. CHAIR SEE BY ELEC.
55. REMOVE CHAIR & CONDUIT TO NEW POWER CENTER. CHAIR SEE BY ELEC.
56. REMOVE CHAIR & CONDUIT TO NEW POWER CENTER. CHAIR SEE BY ELEC.
57. REMOVE CHAIR & CONDUIT TO NEW POWER CENTER. CHAIR SEE BY ELEC.
58. REMOVE CHAIR & CONDUIT TO NEW POWER CENTER. CHAIR SEE BY ELEC.
59. REMOVE CHAIR & CONDUIT TO NEW POWER CENTER. CHAIR SEE BY ELEC.
60. REMOVE CHAIR & CONDUIT TO NEW POWER CENTER. CHAIR SEE BY ELEC.
61. REMOVE CHAIR & CONDUIT TO NEW POWER CENTER. CHAIR SEE BY ELEC.
62. REMOVE CHAIR & CONDUIT TO NEW POWER CENTER. CHAIR SEE BY ELEC.
63. REMOVE CHAIR & CONDUIT TO NEW POWER CENTER. CHAIR SEE BY ELEC.
64. REMOVE CHAIR & CONDUIT TO NEW POWER CENTER. CHAIR SEE BY ELEC.
65. REMOVE CHAIR & CONDUIT TO NEW POWER CENTER. CHAIR SEE BY ELEC.
66. REMOVE CHAIR & CONDUIT TO NEW POWER CENTER. CHAIR SEE BY ELEC.
67. REMOVE CHAIR & CONDUIT TO NEW POWER CENTER. CHAIR SEE BY ELEC.
68. REMOVE CHAIR & CONDUIT TO NEW POWER CENTER. CHAIR SEE BY ELEC.
69. REMOVE CHAIR & CONDUIT TO NEW POWER CENTER. CHAIR SEE BY ELEC.
70. REMOVE CHAIR & CONDUIT TO NEW POWER CENTER. CHAIR SEE BY ELEC.
71. REMOVE CHAIR & CONDUIT TO NEW POWER CENTER. CHAIR SEE BY ELEC.
72. REMOVE CHAIR & CONDUIT TO NEW POWER CENTER. CHAIR SEE BY ELEC.
73. REMOVE CHAIR & CONDUIT TO NEW POWER CENTER. CHAIR SEE BY ELEC.
74. REMOVE CHAIR & CONDUIT TO NEW POWER CENTER. CHAIR SEE BY ELEC.
75. REMOVE CHAIR & CONDUIT TO NEW POWER CENTER. CHAIR SEE BY ELEC.
76. REMOVE CHAIR & CONDUIT TO NEW POWER CENTER. CHAIR SEE BY ELEC.
77. REMOVE CHAIR & CONDUIT TO NEW POWER CENTER. CHAIR SEE BY ELEC.
78. REMOVE CHAIR & CONDUIT TO NEW POWER CENTER. CHAIR SEE BY ELEC.
79. REMOVE CHAIR & CONDUIT TO NEW POWER CENTER. CHAIR SEE BY ELEC.
80. REMOVE CHAIR & CONDUIT TO NEW POWER CENTER. CHAIR SEE BY ELEC.
81. REMOVE CHAIR & CONDUIT TO NEW POWER CENTER. CHAIR SEE BY ELEC.
82. REMOVE CHAIR & CONDUIT TO NEW POWER CENTER. CHAIR SEE BY ELEC.
83. REMOVE CHAIR & CONDUIT TO NEW POWER CENTER. CHAIR SEE BY ELEC.
84. REMOVE CHAIR & CONDUIT TO NEW POWER CENTER. CHAIR SEE BY ELEC.
85. REMOVE CHAIR & CONDUIT TO NEW POWER CENTER. CHAIR SEE BY ELEC.
86. REMOVE CHAIR & CONDUIT TO NEW POWER CENTER. CHAIR SEE BY ELEC.
87. REMOVE CHAIR & CONDUIT TO NEW POWER CENTER. CHAIR SEE BY ELEC.
88. REMOVE CHAIR & CONDUIT TO NEW POWER CENTER. CHAIR SEE BY ELEC.
89. REMOVE CHAIR & CONDUIT TO NEW POWER CENTER. CHAIR SEE BY ELEC.
90. REMOVE CHAIR & CONDUIT TO NEW POWER CENTER. CHAIR SEE BY ELEC.
91. REMOVE CHAIR & CONDUIT TO NEW POWER CENTER. CHAIR SEE BY ELEC.
92. REMOVE CHAIR & CONDUIT TO NEW POWER CENTER. CHAIR SEE BY ELEC.
93. REMOVE CHAIR & CONDUIT TO NEW POWER CENTER. CHAIR SEE BY ELEC.
94. REMOVE CHAIR & CONDUIT TO NEW POWER CENTER. CHAIR SEE BY ELEC.
95. REMOVE CHAIR & CONDUIT TO NEW POWER CENTER. CHAIR SEE BY ELEC.
96. REMOVE CHAIR & CONDUIT TO NEW POWER CENTER. CHAIR SEE BY ELEC.
97. REMOVE CHAIR & CONDUIT TO NEW POWER CENTER. CHAIR SEE BY ELEC.
98. REMOVE CHAIR & CONDUIT TO NEW POWER CENTER. CHAIR SEE BY ELEC.
99. REMOVE CHAIR & CONDUIT TO NEW POWER CENTER. CHAIR SEE BY ELEC.
100. REMOVE CHAIR & CONDUIT TO NEW POWER CENTER. CHAIR SEE BY ELEC.

NOTES:
1. ALL CONCRETE FINISHES ON BEAMS AND WALLS SHALL BE FINISHED TO MATCH EXISTING FINISHES.
2. EXISTING CURBS AND DRIVEWAYS TO REMAIN UNLESS SHOWN OTHERWISE.
3. EXISTING SIDEWALKS TO REMAIN UNLESS SHOWN OTHERWISE.
4. EXISTING UTILITIES TO REMAIN UNLESS SHOWN OTHERWISE.
5. EXISTING LIGHT FIXTURES TO REMAIN UNLESS SHOWN OTHERWISE.

architecture
interiors
planning

MILLER

1177 Idaho Street, Suite 200
Redlands, CA 92374
Phone: 626-352-3400
info@mlr-llc.com

SERGIO PERA
Professional Engineer
No. 11657
State of California

OWNER APPROVAL		
Initials	Date	
	08/20/20	
REVISIONS/ADDENDA		
mark	date	comment
	08/20/20	

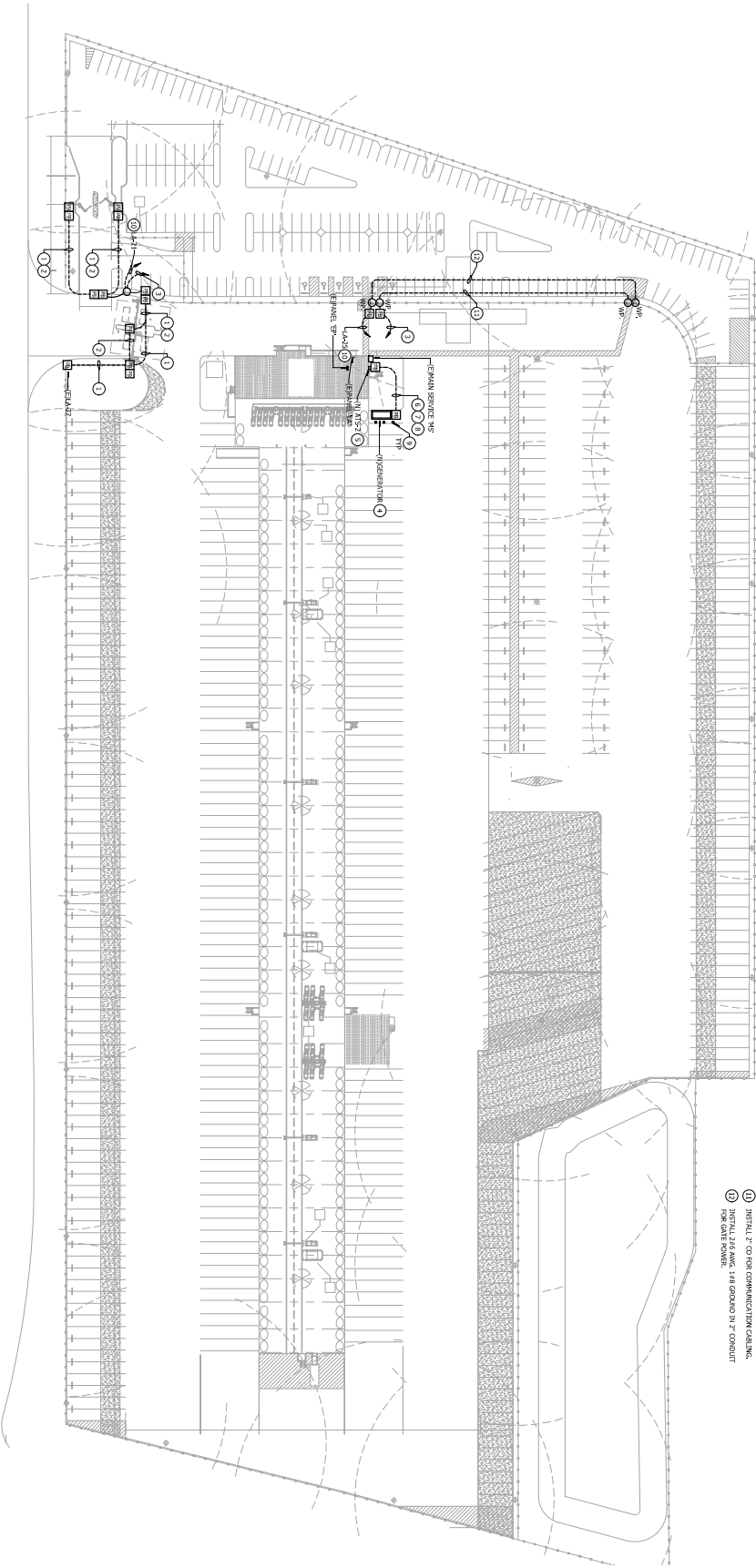
FEDEX FREIGHT PERRIS SITE MAINTENANCE & STRIPING
20388 HARVILL AVE.
PERRIS, CA 92570
APN: 317-240-008-015, 013 & 035

FEDEX FREIGHT
2200 FORWARD DRIVE, DC 2255
HARRISON, ARKANSAS 72602
CONTACT: BEN KAUFFMAN
PHONE: 870-704-5012

Project Information
PROJECT NO: 2200079/RA
DWG FILE: SP/BA
DRAWN BY: SP/BA
CHECKED BY: AS/NOTED
DRAWING SCALE: AS NOTED
DATE: 08/21/2023

Sheet name
EMPLOYEE ENTRANCE SECURITY DTLs.

Sheet number: SD2.03

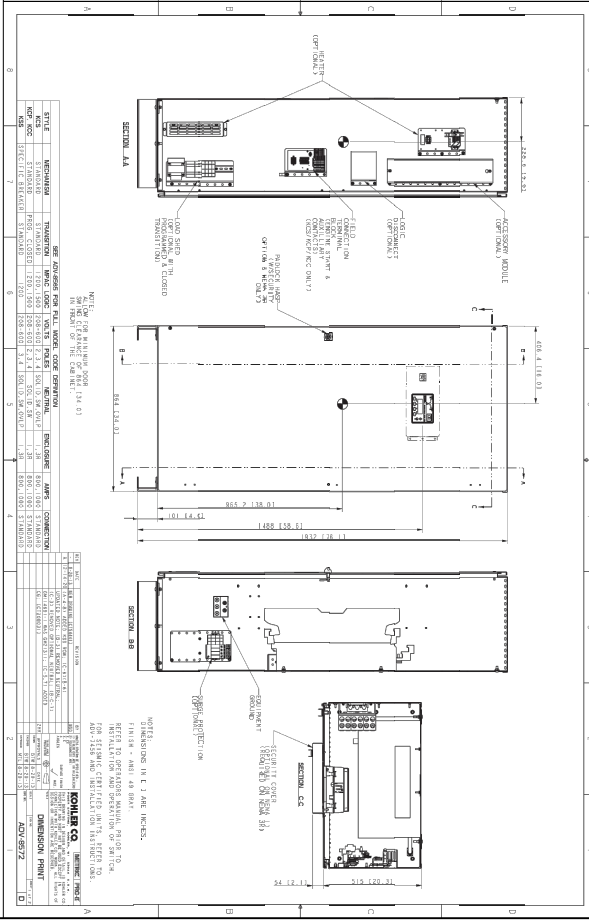
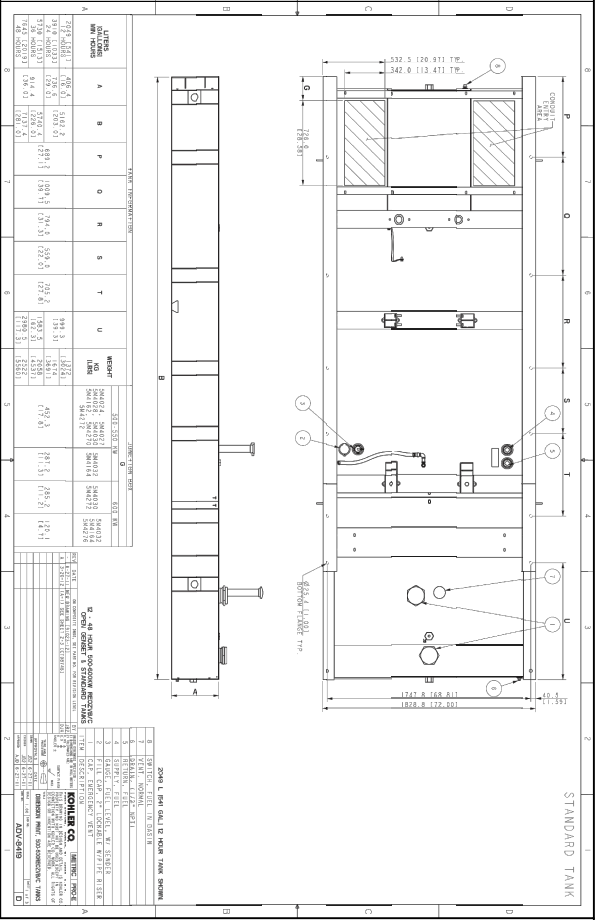
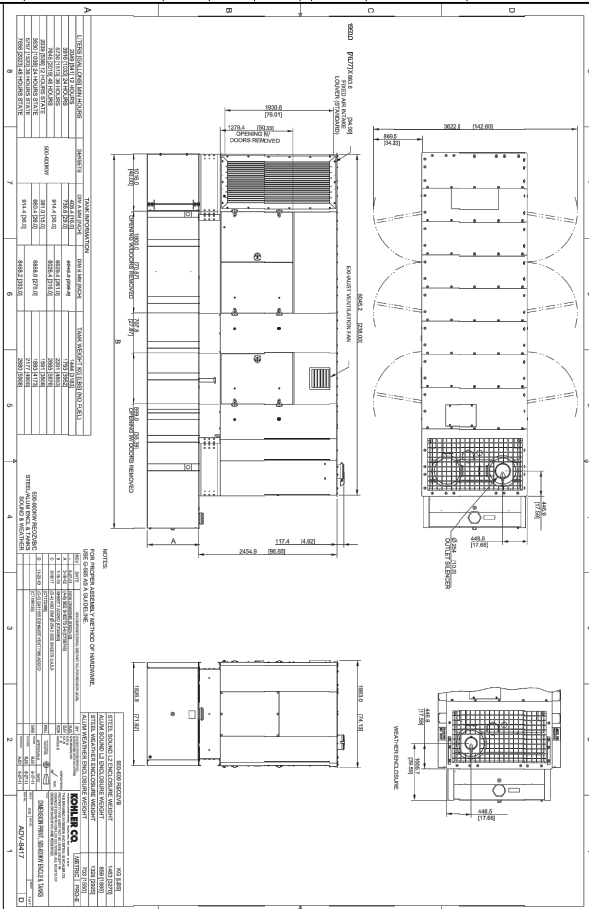
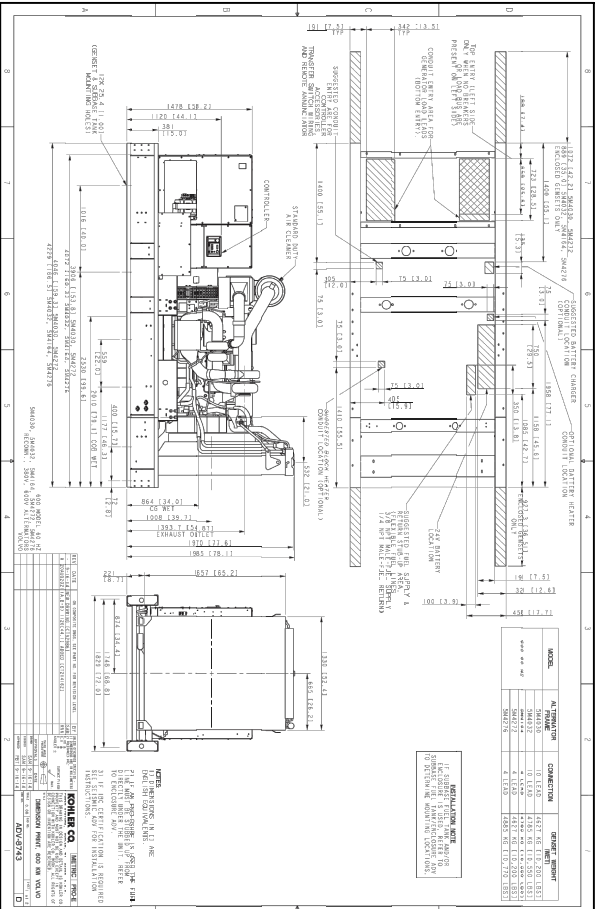


ELECTRICAL SITE PLAN
SCALE: 1" = 50'-0"



- KEY NOTES**
- CONTRACTOR IS TO LOCATE EXISTING DATE
 - CONTRACTOR AND EXTEND CONDUIT TO NEW LOCATION.
 - CONTRACTOR IS TO EXTEND EXISTING CONDUIT TO NEW LOCATION AS SHOWN.
 - PROVIDE (1) 200 RIGID POLYETHYLENE GLASS FIBER REINFORCED PLASTIC (FRP) CONDUIT TO BE LOCATED ON RECORD SIDE OF FENCE.
 - PROVIDE NEW GENERATOR, REFER TO SINGLE LINE DIAGRAM.
 - PROVIDE NEW ATS, REFER TO SINGLE LINE DIAGRAM.
 - REFER TO SINGLE LINE DIAGRAM FOR FEEDER CONNECTIONS.
 - CONTRACTOR IS TO CUT EXISTING CONCRETE REMOVE, PATCH AND REBAR TO MATCH EXISTING CONDITIONS.
 - PROVIDE BRANCH CIRCUITS AND CONTROLS TO ELECTRICAL ROOM FOR COMMUNICATIONS EQUIPMENT.
 - REMOVE EXISTING PROTECTIVE MESH AND GENERATOR, REFER TO SERIAL.
 - CIRCUIT TO BE RUN IN 2" CONDUIT PER FEDEX REQUIREMENTS, INSTALL 246 AMPS, 148 GROUND.
 - INSTALL 2" CPD FOR COMMUNICATION CABLEING.
 - INSTALL 246 AMPS, 148 GROUND IN 2" CONDUIT FOR GATE POWER.
- GENERAL NOTES**
- COORDINATE TRUCKING, HOISTING AND EQUIPMENT LOCATIONS WITH EXISTING CONDITIONS AND NEW WORK.
 - ALL NEW CONDUITS AND CONDUIT TO BE 1" MIN. WALL THICKNESS UNLESS OTHERWISE NOTED.
 - RESPOND TO FEDEX SECURITY DEMANDS FOR EXACT CONDUIT REQUIREMENTS.

<p>1177 Main Street, Suite 200 Redlands, CA 92374 Phone: (909) 353-7400 info@miller-arch.com</p>		<p>2200 FORWARD DRIVE, DC 2255 HARRISON, ARKANSAS 72602 CONTACT: BEN KAUFFMAN PHONE: 870-704-5012</p>																						
<p>FEDEX FREIGHT PERRIS LOADING DOCK IMPROVEMENTS 20388 HARVILL AVE. PERRIS, CA 92570 APN: 317-240-008-015,013 & 035</p>																								
<p>OWNER APPROVAL</p> <table border="1"> <thead> <tr> <th>Initials</th> <th>Date</th> <th>Printed Name</th> </tr> </thead> <tbody> <tr> <td> </td> <td> </td> <td> </td> </tr> </tbody> </table>				Initials	Date	Printed Name																		
Initials	Date	Printed Name																						
<p>REVISIONS/ADDENDA</p> <table border="1"> <thead> <tr> <th>Mark</th> <th>Date</th> <th>Comment</th> </tr> </thead> <tbody> <tr> <td>▲</td> <td>02/09/20</td> <td> </td> </tr> <tr> <td>▲</td> <td> </td> <td> </td> </tr> <tr> <td>▲</td> <td> </td> <td> </td> </tr> <tr> <td>▲</td> <td> </td> <td> </td> </tr> <tr> <td>▲</td> <td> </td> <td> </td> </tr> <tr> <td>▲</td> <td> </td> <td> </td> </tr> </tbody> </table>				Mark	Date	Comment	▲	02/09/20		▲			▲			▲			▲			▲		
Mark	Date	Comment																						
▲	02/09/20																							
▲																								
▲																								
▲																								
▲																								
▲																								
<p>PROJECT INFORMATION</p> <p>PROJECT NO: Z2000797RA DRAWING TITLE: E. SITING DRAWN BY: JYX CHECKED BY: E. SIEDLWIG DRAWING SCALE: AS NOTED DATE: 11/18/2022</p>																								
<p>ELECTRICAL SITE PLAN</p> <p>Sheet number: E1.1 SHEET OF XX SHEETS</p>																								



NO.	DESCRIPTION	DATE	BY
1	ISSUED FOR PERMIT	02/22/2023	CL
2	ISSUED FOR CONSTRUCTION	02/22/2023	CL
3	ISSUED FOR AS-BUILT	02/22/2023	CL

NO.	DESCRIPTION	DATE	BY
1	ISSUED FOR PERMIT	02/22/2023	CL
2	ISSUED FOR CONSTRUCTION	02/22/2023	CL
3	ISSUED FOR AS-BUILT	02/22/2023	CL

NO.	DESCRIPTION	DATE	BY
1	ISSUED FOR PERMIT	02/22/2023	CL
2	ISSUED FOR CONSTRUCTION	02/22/2023	CL
3	ISSUED FOR AS-BUILT	02/22/2023	CL

FEDEX FREIGHT PERRIS
 LOADING DOCK IMPROVEMENTS
 20388 HARVILL AVE.
 PERRIS, CA 92570
 APN: 317-240-008-015.013 & 035

FEDEX FREIGHT
 2200 FORWARD DRIVE, DC 2255
 HARRISON, ARKANSAS 72602
 CONTACT: BEN KAUFFMAN
 PHONE: 870-704-5012

OWNER APPROVAL

DATE: _____

BY: _____

REVISIONS/ADDENDA

NO.	DATE	DESCRIPTION
1	02/22/2023	ISSUED FOR PERMIT
2	02/22/2023	ISSUED FOR CONSTRUCTION
3	02/22/2023	ISSUED FOR AS-BUILT

PROJECT INFORMATION

PROJECT NO: 220007978A

DATE: 02/22/2023

DRAWING SCALE: AS NOTED

DATE: 11/18/2022

ARCHITECTURE
 interiors
 planning

MILLER

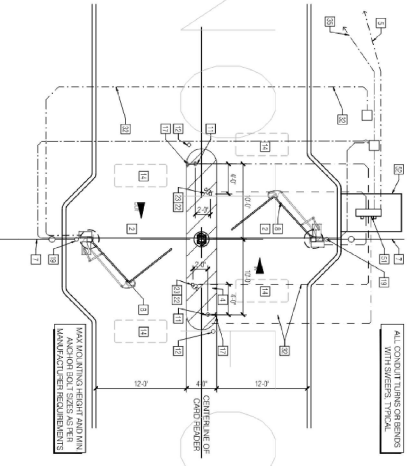
1177 Idaho Street, Suite 200
 Redlands, CA 92374
 Phone: (909) 355-7400
 info@mlr-arc.com
 info@mlr-ipl.com

KEYED NOTES - SITE SECURITY

KEY NOTE SYMBOL: SOME KEY NOTES MAY NOT APPLY

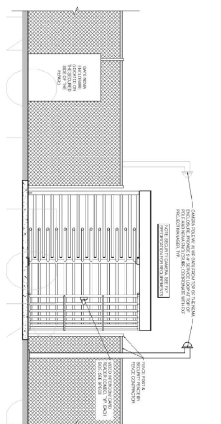
1. GUARD BASH, SEE SHEET A13 FOR DETAILS
2. 8" MAX. GRAIN, LEVEL FINISH FOR PROPER GATE OPERATION
3. PAINTED HANDICAP SYMBOLS SHALL WITH INTERNATIONAL SYMBOL OF ACCESS
4. PAINTED STRIPES, YELLOW (1)
5. PROPOSE POWER AND CONDUIT TO MAIN POWER CONTROL, CONDUIT SIZE BY ELEC. ENGINEER MAN, 2' DIA.
6. CONCRETE WALK
7. SIGNAL SECURITY FENCE, SEE SHEET PM
8. 8' FOLD SECURITY GATES, REFER TO MANUFACTURER'S INSTALLATION INSTRUCTIONS FOR COLLUM FOUNDATION SPECIFICATIONS
9. CONDUIT FROM OFFICE ELECTRICAL ROOM FOR POWER
10. 2" CONDUIT FOR ELECTRICAL POWER FROM OFFICE ELECTRICAL ROOM WITH FIVE STAR UP & DP
11. CONCRETE BASH FOR HEADERS
12. PRE BOLLARDS FILLD W/ CONCRETE, SEE DET. 1.6.5.2.2.0.0
13. 1" VC CONDUIT FOR DATA WITH FIVE
14. VEHICLE DETECTION SAFETY ROOM
15. TURNSTILE GATE MOTOR, SEE SPEC. W/ H-C GATE MOTOR, SEE SPEC. DET. 1.6.5.2.2.2.0.0 SEE SPEC.
16. GATE POST BLOCK ENHANCE PROVISION FOR GATE HEADERS & VIDEO INTERCOM, SEE DET. 1.6.5.2.2.2.0.0 SEE SPEC.
17. VIDEO INTERCOM PROVISION, CABO READER & VIDEO INTERCOM, SEE DET. 1.6.5.2.2.2.0.0 SEE SPEC.
18. FENCE POSTS AS REQUIRED BY FENCE MANUFACTURER
19. MOUNTED OPERATION FOR CONTAINER SECURITY GATE
20. CONTAINER SECURITY GATE MANUFACTURER & CLEAR @ BOTTOM WALL
21. CAMERA RINGERS & INSTALLED BY FEDEX, CALLING AND CONDUIT BY CONTRACTOR (SEE SPEC. 1)
22. CAMERA RINGERS & INSTALLED BY FEDEX, CALLING AND CONDUIT BY CONTRACTOR (SEE SPEC. 1)
23. CAMERA RINGERS & INSTALLED BY FEDEX, CALLING AND CONDUIT BY CONTRACTOR (SEE SPEC. 1)
24. CAMERA RINGERS & INSTALLED BY FEDEX, CALLING AND CONDUIT BY CONTRACTOR (SEE SPEC. 1)
25. CAMERA RINGERS & INSTALLED BY FEDEX, CALLING AND CONDUIT BY CONTRACTOR (SEE SPEC. 1)
26. 1" CONDUIT TO QUARD HOUSE FOR ELECTRICAL POWER
27. 1" CONDUIT FROM POWER ROOM COMPLETED TO MAINWAY AND SECOND
28. 1" CONDUIT FROM POWER ROOM COMPLETED TO MAINWAY AND SECOND
29. 1" CONDUIT FROM POWER ROOM COMPLETED TO MAINWAY AND SECOND
30. 1" CONDUIT FROM POWER ROOM COMPLETED TO MAINWAY AND SECOND
31. 1" CONDUIT FROM POWER ROOM COMPLETED TO MAINWAY AND SECOND
32. 1" CONDUIT FROM POWER ROOM COMPLETED TO MAINWAY AND SECOND
33. 1" CONDUIT FROM POWER ROOM COMPLETED TO MAINWAY AND SECOND
34. 1" CONDUIT FROM POWER ROOM COMPLETED TO MAINWAY AND SECOND
35. 1" CONDUIT FROM POWER ROOM COMPLETED TO MAINWAY AND SECOND
36. 1" CONDUIT FROM POWER ROOM COMPLETED TO MAINWAY AND SECOND
37. 1" CONDUIT FROM POWER ROOM COMPLETED TO MAINWAY AND SECOND
38. 1" CONDUIT FROM POWER ROOM COMPLETED TO MAINWAY AND SECOND
39. 1" CONDUIT FROM POWER ROOM COMPLETED TO MAINWAY AND SECOND
40. 1" CONDUIT FROM POWER ROOM COMPLETED TO MAINWAY AND SECOND
41. 1" CONDUIT FROM POWER ROOM COMPLETED TO MAINWAY AND SECOND
42. 1" CONDUIT FROM POWER ROOM COMPLETED TO MAINWAY AND SECOND
43. 1" CONDUIT FROM POWER ROOM COMPLETED TO MAINWAY AND SECOND
44. 1" CONDUIT FROM POWER ROOM COMPLETED TO MAINWAY AND SECOND
45. 1" CONDUIT FROM POWER ROOM COMPLETED TO MAINWAY AND SECOND
46. 1" CONDUIT FROM POWER ROOM COMPLETED TO MAINWAY AND SECOND
47. 1" CONDUIT FROM POWER ROOM COMPLETED TO MAINWAY AND SECOND
48. 1" CONDUIT FROM POWER ROOM COMPLETED TO MAINWAY AND SECOND
49. 1" CONDUIT FROM POWER ROOM COMPLETED TO MAINWAY AND SECOND
50. 1" CONDUIT FROM POWER ROOM COMPLETED TO MAINWAY AND SECOND
51. 1" CONDUIT FROM POWER ROOM COMPLETED TO MAINWAY AND SECOND
52. 1" CONDUIT FROM POWER ROOM COMPLETED TO MAINWAY AND SECOND
53. 1" CONDUIT FROM POWER ROOM COMPLETED TO MAINWAY AND SECOND
54. 1" CONDUIT FROM POWER ROOM COMPLETED TO MAINWAY AND SECOND
55. 1" CONDUIT FROM POWER ROOM COMPLETED TO MAINWAY AND SECOND
56. 1" CONDUIT FROM POWER ROOM COMPLETED TO MAINWAY AND SECOND
57. 1" CONDUIT FROM POWER ROOM COMPLETED TO MAINWAY AND SECOND
58. 1" CONDUIT FROM POWER ROOM COMPLETED TO MAINWAY AND SECOND
59. 1" CONDUIT FROM POWER ROOM COMPLETED TO MAINWAY AND SECOND
60. 1" CONDUIT FROM POWER ROOM COMPLETED TO MAINWAY AND SECOND
61. 1" CONDUIT FROM POWER ROOM COMPLETED TO MAINWAY AND SECOND
62. 1" CONDUIT FROM POWER ROOM COMPLETED TO MAINWAY AND SECOND
63. 1" CONDUIT FROM POWER ROOM COMPLETED TO MAINWAY AND SECOND
64. 1" CONDUIT FROM POWER ROOM COMPLETED TO MAINWAY AND SECOND
65. 1" CONDUIT FROM POWER ROOM COMPLETED TO MAINWAY AND SECOND
66. 1" CONDUIT FROM POWER ROOM COMPLETED TO MAINWAY AND SECOND
67. 1" CONDUIT FROM POWER ROOM COMPLETED TO MAINWAY AND SECOND
68. 1" CONDUIT FROM POWER ROOM COMPLETED TO MAINWAY AND SECOND
69. 1" CONDUIT FROM POWER ROOM COMPLETED TO MAINWAY AND SECOND
70. 1" CONDUIT FROM POWER ROOM COMPLETED TO MAINWAY AND SECOND
71. 1" CONDUIT FROM POWER ROOM COMPLETED TO MAINWAY AND SECOND
72. 1" CONDUIT FROM POWER ROOM COMPLETED TO MAINWAY AND SECOND
73. 1" CONDUIT FROM POWER ROOM COMPLETED TO MAINWAY AND SECOND
74. 1" CONDUIT FROM POWER ROOM COMPLETED TO MAINWAY AND SECOND
75. 1" CONDUIT FROM POWER ROOM COMPLETED TO MAINWAY AND SECOND
76. 1" CONDUIT FROM POWER ROOM COMPLETED TO MAINWAY AND SECOND
77. 1" CONDUIT FROM POWER ROOM COMPLETED TO MAINWAY AND SECOND
78. 1" CONDUIT FROM POWER ROOM COMPLETED TO MAINWAY AND SECOND
79. 1" CONDUIT FROM POWER ROOM COMPLETED TO MAINWAY AND SECOND
80. 1" CONDUIT FROM POWER ROOM COMPLETED TO MAINWAY AND SECOND
81. 1" CONDUIT FROM POWER ROOM COMPLETED TO MAINWAY AND SECOND
82. 1" CONDUIT FROM POWER ROOM COMPLETED TO MAINWAY AND SECOND
83. 1" CONDUIT FROM POWER ROOM COMPLETED TO MAINWAY AND SECOND
84. 1" CONDUIT FROM POWER ROOM COMPLETED TO MAINWAY AND SECOND
85. 1" CONDUIT FROM POWER ROOM COMPLETED TO MAINWAY AND SECOND
86. 1" CONDUIT FROM POWER ROOM COMPLETED TO MAINWAY AND SECOND
87. 1" CONDUIT FROM POWER ROOM COMPLETED TO MAINWAY AND SECOND
88. 1" CONDUIT FROM POWER ROOM COMPLETED TO MAINWAY AND SECOND
89. 1" CONDUIT FROM POWER ROOM COMPLETED TO MAINWAY AND SECOND
90. 1" CONDUIT FROM POWER ROOM COMPLETED TO MAINWAY AND SECOND
91. 1" CONDUIT FROM POWER ROOM COMPLETED TO MAINWAY AND SECOND
92. 1" CONDUIT FROM POWER ROOM COMPLETED TO MAINWAY AND SECOND
93. 1" CONDUIT FROM POWER ROOM COMPLETED TO MAINWAY AND SECOND
94. 1" CONDUIT FROM POWER ROOM COMPLETED TO MAINWAY AND SECOND
95. 1" CONDUIT FROM POWER ROOM COMPLETED TO MAINWAY AND SECOND
96. 1" CONDUIT FROM POWER ROOM COMPLETED TO MAINWAY AND SECOND
97. 1" CONDUIT FROM POWER ROOM COMPLETED TO MAINWAY AND SECOND
98. 1" CONDUIT FROM POWER ROOM COMPLETED TO MAINWAY AND SECOND
99. 1" CONDUIT FROM POWER ROOM COMPLETED TO MAINWAY AND SECOND
100. 1" CONDUIT FROM POWER ROOM COMPLETED TO MAINWAY AND SECOND

DIAGRAMS ARE FOR REFERENCE ONLY. VERIFY EXACT REQUIREMENTS WITH FEDEX PROJECT MANAGER PRIOR TO INSTALLATION.



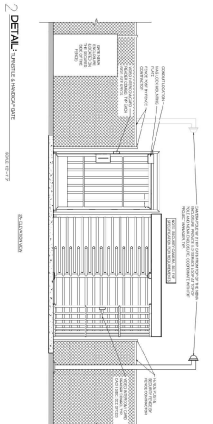
EMPLOYEE VEHICLE ENTRANCE WITH BI FOLD GATES

4



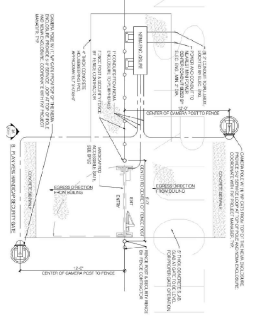
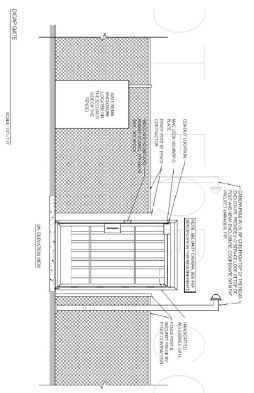
TURNSTILE CONDUIT LAYOUT

1



TURNSTILE AND HANDICAP GATE LAYOUT

2



HANDICAP GATE

3

	<p>1177 Idaho Street, Suite 200 Redlands, CA 92374 Phone: (909) 355-7400 info@mlr-arch.com</p>		<p>OWNER APPROVAL</p> <table border="1" style="width: 100%; border-collapse: collapse;"> <tr> <th>Initials</th> <th>Date</th> <th>Press</th> </tr> <tr> <td> </td> <td> </td> <td> </td> </tr> </table> <p>REVISIONS/ADDENDA</p> <table border="1" style="width: 100%; border-collapse: collapse;"> <thead> <tr> <th>mark</th> <th>date</th> <th>comment</th> </tr> </thead> <tbody> <tr> <td> </td> <td> </td> <td> </td> </tr> </tbody> </table>	Initials	Date	Press				mark	date	comment			
Initials	Date	Press													
mark	date	comment													
<p>FEDEX FREIGHT 2200 FORWARD DRIVE, DC 2255 HARRISON, ARKANSAS 72602 CONTACT: BEN KAUFFMAN PHONE: 870-704-5012</p>															
<p>PROJECT INFORMATION</p> <p>PROJECT NO: 22000797A DRAWING NO: 111182022 DATE: 11/18/2022 DRAWING SCALE: AS NOTED</p>															
<p>ELECTRICAL DETAILS</p> <p>Sheet number: E4.3 SHEET OF XX SHEETS</p>															