

**SUPERVISOR
KEVIN JEFFRIES
RIVERSIDE
COUNTY
DISTRICT #1**



Jeffries Journal

Volume 10, Issue 1

January 2022

Kevin's Corner

“**Wall-Time**” is a polite way to describe a serious problem for local ambulance providers (AMR and local fire departments). You call 911 with a medical emergency. You or a loved one is then transported by paramedics to an area hospital emergency room. Unfortunately, for numerous hospitals (but not all) in Riverside County, the emergency rooms can be extremely busy or understaffed (or both), causing significant delays (hours) for the patient to be admitted. Many of you are saying - so what's new? The difference is that the paramedics/firefighters who transported the patient CANNOT leave for other emergencies until the patient is admitted by the hospital, thereby tying up the medics/firefighters and the ambulance. When this starts happening at numerous hospitals across the region – the lockdown of the medic ambulances can cause very significant impacts at other pending 911 calls. In January, the Board of Supervisors will be taking this matter up and looking for solutions.

Inside this issue:

Kevin's Corner Continued	2
District #1 Board & Commission Openings	3
OHV survey	4
Point in Time Count	5
Local District #1 Events	6– 10
Community Info	11
2022 Clean Up Info	12

Encroaching? It never fails! You are in a hurry (work, school, Dr appt, etc.) and the road ahead has been narrowed down to one lane and the traffic is at a dead stop. Did you know that (with just a few exceptions) any construction work within a public road right-of-way requires an encroachment permit be issued from the local city or the county (for non-city owned roads), or if the work is being done on a state highway, a permit from Caltrans? For County owned roads, the County generally requires contractors to NOT close lanes during peak commuter hours (excepting emergency repairs of course). So, if you see a questionable lane closure during peak commuter hours, you might want to make a call to your local city hall or the County and suggest they check into it, as some contractors are better behaved than others.

Bulky Item Pick Up! In just about every city and in every unincorporated county community, most local trash haulers (who have a contract with the city or County) offer a free (or discounted) bulky item (mattress, refer, sofa, etc.) pickup for homeowners. In Riverside County's unincorporated communities, the trash hauler will provide two bulky item pickups per year. You just need to call your trash provider.

My County Supervisor Is...? With the completion of the mandatory redrawing of boundaries for the five County Supervisorial Districts, the bulk of the calls and emails to our office has been.... *If not you – Who? And When?* The short version is the boundaries will begin changing at the end of 2022 and then again at the end of 2024. The best way to describe it is a “phased” handoff will occur with each election.

New District 1 will have all the city of Riverside, all the city of Perris, nearly half of the city of Jurupa Valley, and the unincorporated communities of Mead Valley, Good Hope, Meadowbrook, and Highgrove. Note: By the end of 2024, District 1 will no longer represent *Lake Elsinore, Wildomar, Canyon Lake, Lakeland Village, Temescal Valley, De Luz, La Cresta, El Cariso, Woodcrest, Lake Hills, Lake Mathews, or Gavilan Hills*. An election for the new District 1 will not be held until 2024.

continued on page 2



Follow Us Online!

**www.facebook.com/
SupervisorJeffries**

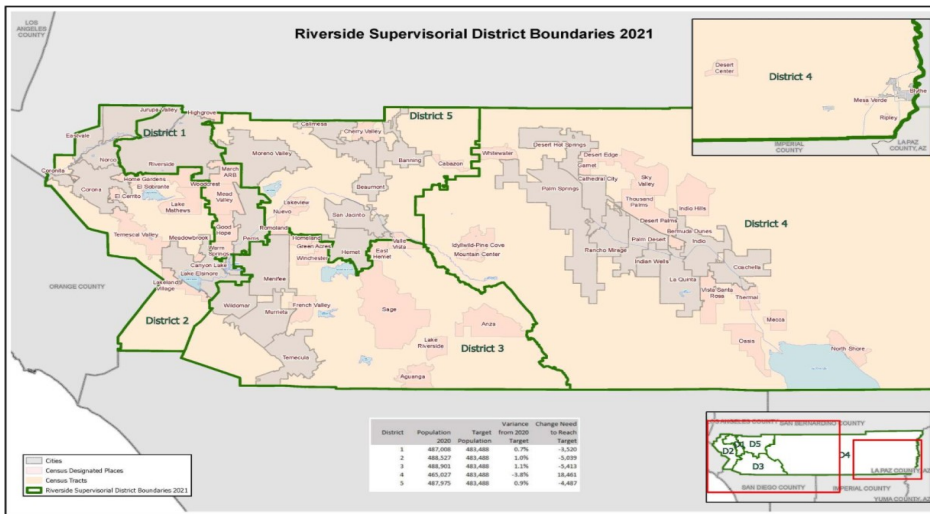
Twitter: @SupJeffries



(continued from Page 1)

New District 2 will have all of Lake Elsinore City & Valley, Canyon Lake, Lakeland Village, El Cariso, Temescal Valley, Woodcrest, Lake Hills, Lake Mathews and Gavilan Hills. Voters in those communities (along with Corona, Norco, Eastvale, and a portion of Jurupa Valley) will be casting votes in June and (possibly) November 2022. District 2 will no longer represent any of the city of Riverside or Highgrove.

New District 3 will pick up Wildomar, De Luz, and La Cresta from D1 at the end of 2024. They will join Temecula, Murrieta, Menifee, French Valley, Winchester, Green Acres, Homeland, Wine Country, Sage, Anza, Aguanga, and East Hemet. D3 will no longer represent Hemet or San Jacinto. An election for new District 3 will not occur until 2024.



You can see the detailed maps of the whole county here: <https://tinyurl.com/RivCoSupMaps>

The Legal Explanation: When do I lose my current Supervisor? Per our County Counsel:

“Although the supervisorial district boundary changes are considered adjusted once a plan proposal has been approved and the necessary implementing ordinance has been adopted, they do not go into effect immediately. California Elections Code section 21506 states in pertinent part: “The term of office of any supervisor who has been elected and whose term of office has not expired shall not be affected by any change in the boundaries of the district from which the supervisor was elected. ... The boundary adjustments to District 1 and District 3 will not take effect until the election that is held in 2024 (for elected supervisor taking office in January 2025), and District 2, 4 and 5 will not take effect until the election that is held in 2022 (for elected supervisor taking office in January 2023). As a result, during the elections held in 2022 and 2024, voters will vote according to the new adjusted boundary lines.”

WHO/WHAT/WHEN This will create some odd situations in the intervening two years, as some areas will have two Supervisors elected to their districts (like Woodcrest and Temescal Valley), and others, like the cities of Menifee and Perris, will technically have none. Historically, the Board of Supervisors has made agreements among themselves as to how to represent those communities that no longer have an elected Supervisor, sometimes formally (as when Supervisor Ashley became “caretaker” of the 4th District following the death of Supervisor Benoit), and sometimes informally. The Board will have to decide how best to do that by the end of next year, when we officially know who the Supervisors for the 2nd, 4th, and 5th Districts will be. But to make a long story short, those of you who are currently represented by me, will generally be able to call upon me until I retire in late December 2024, though some of you will also be represented by a second Supervisor as the transition occurs in 2022 and 2024.

Respectfully,
Kevin Jeffries

*Interested in serving your local community?
Perhaps you are more of a regional advocate?
If you live in or have a business in District #1, be sure to look at the list
of openings we have below for local commissions.
If you feel you have the time to dedicate to making the district a better place feel free
to apply online at www.supervisorjeffries.com, under Boards & Commissions*



Elsinore Valley Cemetery District - One (1) opening

Fair Board (National Date Festival) - One (1) opening

In Home Support Services (IHSS) - Recipient of IHSS Services—One (1) opening

Behavioral Health Commission - Family Member - One (1) opening

Lakeland Village Community Advisory Council— One (1) Alternate

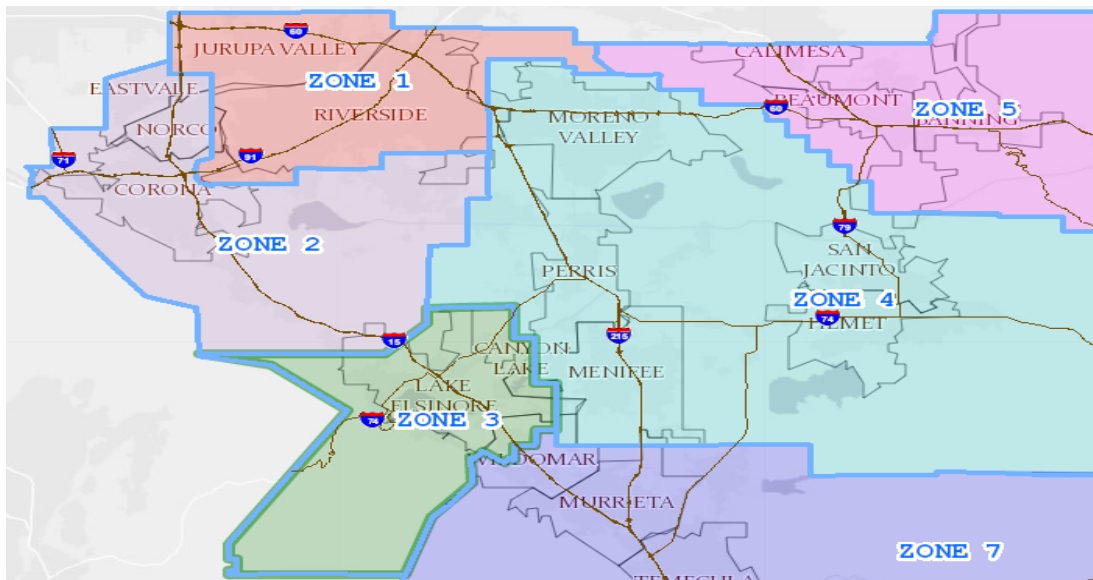
Woodcrest Municipal Advisory Council (MAC) - One (1) Alternate

First 5 Advisory Committee— One (1) opening

**Riverside County Flood Control Commission—Zone 1 and Zone 3—Two openings,
one in each Zone see map: www.rcflood.org/About-the-District/District-Zones-2021**

Open Position: Flood Control Commissioner

The First District has two openings on the Riverside County Flood Control Commission representing Zone 1 and Zone 3. Commissioners serve as unpaid volunteers, attend a minimum of one annual meeting, review the District's Annual Budget and Regional Drainage Plans. For more information visit the District's website at www.rcflood.org. To apply please submit the online application available at www.supervisorjeffries.org



Riverside County OHV Park Feasibility Study

Join us for an opportunity to provide input on a potential location for an off-highway vehicle (OHV) park in Riverside County!

The Regional Parks and Open Space District of the County of Riverside in partnership with the State of California, Off-Highway Motor Vehicle Recreation Division, is conducting a feasibility study to develop a master plan and site selection choices for a future public OHV Park.

Through technical analysis and work with partners and stakeholders, our team has identified six potential sites. With your help, we are working to refine these sites to a set of three.

We want to hear from you about:

- * Location
- * Access and usability
- * Safety
- * General input and questions

Online Survey

Use our online survey to provide feedback on potential sites, including an interactive mapping tool. Survey is open now and will remain open until **January 28, 2021**.

The survey can be accessed here: <https://bit.ly/3EqbhS8>

Virtual Meeting

Join us for a virtual meeting to learn more about the refined project sites, and let us know your thoughts. The meeting will take place virtually on **January 27, 2022**. Head over to the project webpage for more details: www.rivcoparksohv.org.



COUNTY OF RIVERSIDE Off Highway Vehicle (OHV) Park Feasibility Study

Share your thoughts on a potential location for an off-highway vehicle (OHV) park in Riverside County!

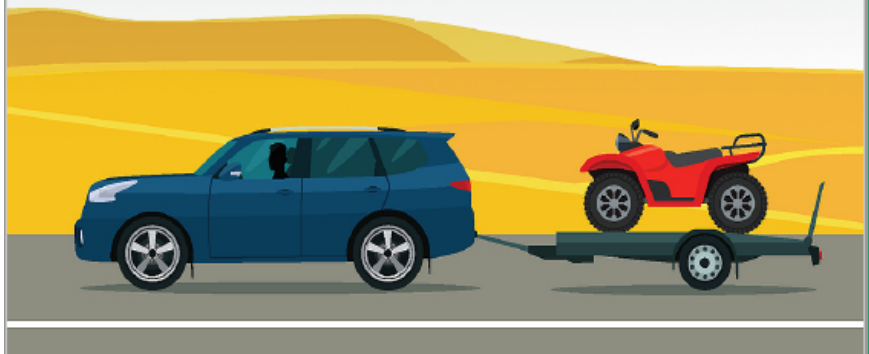
Take the Survey - help refine six potential sites to three:

<https://bit.ly/3EqbhS8>

Survey Closes **January 28, 2022**

Join us for a **virtual meeting** on **January 27, 2022 at 6:30 pm**

Visit the project webpage to learn more about our Feasibility Study and check back mid-January for meeting link: www.rivcoparksohv.org



Riverside County Seeks Volunteers for 2022 Homeless Count *The count helps ensure communities get the funding needed to find long-term solutions to homelessness*

RIVERSIDE COUNTY, Calif.— Volunteers are encouraged to sign up now for the 2022 Point-in-Time Count, an annual survey of homeless adults and youth in cities and unincorporated communities across Riverside County.

More than 700 volunteers are needed for the 2022 count, which is scheduled for Jan. 26. Volunteers from nonprofits, churches and other groups will fan out across Riverside County's 7,300 sq.-mile landscape.

Organizers say widespread participation from those who know their communities and who can communicate with the homeless is essential to obtaining an accurate count.

The Department of Housing and Urban Development requires communities that receive funding, including Riverside County, to perform the count. The funds provide support and services, including housing, to help end homelessness.

Due to COVID-19 restrictions and precautions, the large-scale count could not be completed in 2021, instead a sheltered count was conducted where data was gathered based on shelter bed occupation. "We are excited to start recruiting and training volunteers for the 2022 count. The safety and well-being of our volunteers and staff is a priority so we are working with the Riverside County Department of Public Health and will be following safety measures to resume the count in full scale" Gonzalez Rivera said.

Training is required prior to the count. Volunteers must also have a smart phone or tablet to conduct the survey, be able to walk up to two hours and must be 18 or older. Volunteers ages 16-17 must be accompanied by an adult.

The general Point-in-Time Count is scheduled for Wednesday Jan. 26 while the Youth Count is scheduled Wednesday Jan. 26 through Friday, Jan. 28.

Interested participants can register at MoreThanACount.org or YouthCount.MoreThanACount.org. at MoreThanACount.org or YouthCount.MoreThanACount.org.

More Than a Count
Volunteers Needed

Join the **Homeless Point-in-Time Count** of unsheltered adults to help determine the need for housing and services

Wednesday, January 26, 2022
5:30am - 9:30am

Register here:
www.MoreThanACount.org

Point in Time Hotline
951-358-3844

RivCoPIT@RivCo.org

HWS HOUSING AND WORKFORCE SOLUTIONS
ENGAGE ENCOURAGE LOSE

Mead Valley Festival of Lights

Christmas in Mead Valley was celebrated with the Festival of Lights and Cookies with Santa. This event was amazing! Over 450 cars showed up at this family event. We handed out toys, took pictures with Santa and our amazing volunteers from Citrus Hills High School did an amazing job decorating the parking lot with thousands of lights for the community to enjoy the Holidays.

Thank you to Misty Felix and Lupita Mendoza as well as The Grove Church for their hard work and all the hours dedicated to this event. Thanks to Family Resource Center - First 5 Riverside, and Spark of Love for donating all the toys, and to The Grove volunteers for helping with this great event.



Good Hope Festival of Lights

The Good Hope/Meadowbrook community had the opportunity to enjoy a Christmas event with a Drive-thru Festival of Lights, although it was a very cold night, families took the opportunity to take their photo with Santa Claus and the children enjoyed cookies, candy canes. All kids who attended were given a toy as well.

A big thank you to Restoration Agape, who brought the Christmas spirit to our community by decorating the Christmas photo booth, tent and set the mood with Holiday music and thousands of lights.



Lakeland Village

Cookies with The Grinch and the First Annual Tree Lighting at the Lakeland Village Community Center was a great success. The event was sponsored by Studio 395, the operators of the LVCC. Families were able to visit with the Grinch and Santa, play games, visit booths hosted by Cops for Kids, Elsinore Valley Municipal Water District, Riverside County Animal Services, Expectations Academy, Fundamental Foundations, Cottage Tea Parties, and Iglesia Del Lago. Families were also able to check out the newest additions to the Center (Pickleball, Playground, Sand Volleyball) and see demos of activities that are provided at the community center (Martial arts, ceramics, etc)



Woodcrest Cookies with Santa

On December 15, 2021, the Woodcrest Library held “Cookies With Santa”. Over 100 children attended and participated in face paintings, drawing, eating cookies and drinking hot chocolate. In addition to those wonderful activities the kids got to interact with Santa Claus and take family photos. Western Municipal Water District graciously donated water bottles, the Riverside County Library System had a table outside, and there was a Spark of Love Toy Drive collecting holiday gifts. The boxes for gifts were taller than most of the children there and were overflowing with donated toys.



Deleo WinterFest

On December 18, 2021, the Deleo Park in Temescal Valley held “Deleo Winter Fest”. Over 1000 people attended and participated in face paintings, roasting s’mores, sledding down snow, carnival games, jump houses, eating cookies and drinking hot chocolate. In addition to those activities the kids got to interact with Disney’s Elsa, and Santa Claus and take family photos. There was a small train for train rides, the Riverside County Fire Department, and the Riverside County Library System were also present.





Riverside County

Highway 74 Multi-Modal Transit Plan Public Comment Period

The Riverside County Planning Department is releasing the Draft Highway 74 Multi-Modal Transit Plan for public comment starting January 24, 2022.

The Draft Transit Plan can be viewed here: <https://planning.rctlma.org/MMTP>

It is anticipated that the Draft Transit Plan will be considered by the Board of Supervisors in late February 2022. In order to allow staff adequate time to consider comments and possibly incorporate revisions prior to the Board of Supervisor's consideration, comments should be submitted by February 7, 2022

For additional information please contact:

Robert Flores
Principal Planner
rflores@rivco.org
(951) 955-1195 (hablo Español)



What is a multi-modal transit plan (MMTP)?

- A planning document that identifies:
- Key locations for future roads, sidewalks, and other improvements
- Consistent designs/standards
- Available tools for implementation
- Where money can come from to pay for projects!



RIVERSIDE COUNTY
PLANNING DEPARTMENT

Michael Baker
INTERNATIONAL



Do you need help
with your utility bills?
CAP can help!



The Covid-19 pandemic has created hardships for people across Riverside County. Community Action Partnership is here to assist those in need during these trying times.

UTILITY ASSISTANCE PROGRAMS

REQUIRED DOCUMENTS FOR ELIGIBILITY

- Current utility bills (electric, gas, propane)
- Proof of household income (last 4 weeks)
- Photo ID and social security card
- Birth certificate, US passport, or proof of legal residency

CONTACT AND APPLY TO COMMUNITY ACTION PARTNERSHIP PROGRAMS



P.O. Box 5760
Riverside, CA 92517



energy@capriverside.org
www.capriverside.org



951-955-4900

Riverside County Presents



HOMES FOR THE HOLIDAYS

'TIS THE SEASON FOR GIVING

LANDLORDS receive a BONUS equal to 3 TIMES the rent for every family that moves into one of your units during the holidays!!!

ELIGIBILITY PERIOD:

NOVEMBER 17, 2021-FEBRUARY 14, 2022

For more information, contact Melissa Reyes at 951-343-5477 or email MeReyes@rivco.org

Partnering Agencies:

- Lighthouse Social Service Center
- RUHS-Behavioral Health
- Inland SoCal 211+
- DPSS-Adult Services Division
- Sigma Beta Xi
- Starting Over, Inc.



HWS HOUSING AND WORKFORCE SOLUTIONS
ENGAGE. INCOURAGE. EQUIP.

2022 FREE COMMUNITY CLEAN-UP EVENTS



FOR MORE INFORMATION CALL 951-486-3200 OR VISIT WWW.RCWASTE.ORG

DATE	COMMUNITY	ADDRESS	COMMUNITY CLEAN-UP	TIRE COLLECTION	PARTNER
<i>All events are from 8am - Noon or until all waste bins are full</i>					
March 26	Lakeland Village	Lakeland Village Community Center 16275 Grand Avenue Lake Elsinore, CA 92530	X	X	CRSR
April 2	Meadowbrook/ Good Hope	Vacant Lot HWY 74 and Meadowbrook Ave. Perris, CA 92570	X	X	WM
April 16	Gavilan Hills	Gavilan Hills Ranch Market 22060 Gavilan Road Perris, CA 92570	X	X	WM
May 21	Mead Valley	Mead Valley Landfill 22376 Forrest Road Perris, CA 92570	X	X	WM
October 1	Woodcrest	Sandals Church Woodcrest 17421 Van Buren Boulevard Riverside, CA 92504	X	X	WM
October 22	Meadowbrook/ Good Hope	Mead Valley Landfill 22376 Forrest Road Perris, CA 92570	X	X	WM
November 19	Mead Valley	Mead Valley Landfill 22376 Forrest Road Perris, CA 92570	X	X	WM
TBD	University City	Roadside Clean Up CA 92241	X	X	WM

Be prepared to unload your refuse and bulky items from your vehicles

Due to COVID-19 protocols, a mask must be worn when you are within 6ft of others.

For more information please call 951 486-3200 or visit: <http://www.rcwaste.org/where/ccu>

