

**SUPERVISOR
KEVIN JEFFRIES
RIVERSIDE
COUNTY
DISTRICT #1**



Jeffries Journal

Volume 9, Issue 4

April 2021

Kevin's Corner

The Bumpy Road to Voting - The planning and logistics involved with coordinating the efforts to facilitate 1 million voters casting these votes across Riverside County is an unbelievably complex effort that relies on professional staff, temporary staff and trained community volunteers. The primary end goal, of course, is always "accuracy." But the process leading up to casting our votes and the counting of the ballots is thick with state regulations that are constantly changing. Throw in the occasional partisan battle and any actual campaign disputes and you might just get an ulcer trying to make everyone happy. There has not been any evidence of fraud or corruption here locally, but I've been advocating for a standing Citizen's Commission in Riverside County, with representatives from the major parties, "3rd parties" and independent voters. Not because we need more fingers in the pie, but because we need informed citizens who understand the process, who can offer thoughtful input into the planning, training, staffing, budget needs, and frankly offer an independent point of view to the Registrar of Voters and to the Board of Supervisors. They could independently review the challenges and the possible ways to improve (and no, they wouldn't need or receive access to confidential voter information). At a minimum, a group such as this could provide confidence to residents that our elections have been free and fair. A report is due back soon to the Board of Supervisors regarding some of these challenges and issues from the past election. Hopefully, it will also address the proposal of creating a "Citizen's Commission on Election Integrity" as I proposed a year ago. Stay tuned.

Fire Season and Weeds – It is hard to believe that fire season may actually be just a few weeks away (not that it ever really ends in Southern California). During my volunteer firefighter days (when I was much younger and in better shape), Riverside County had some very large grass/vegetation fires as early as April. It really makes a difference for firefighters chasing fast moving fires when the weeds around properties and fence lines are cleared/mowed down. All Riverside County fire engines have 3-person Firefighter staffing 24/7 from our State contractor CAL FIRE. Let's make sure our firefighters have a fighting chance to save homes and property by getting weed abatement done early this year. For information about weed abatement, or to report a dangerous property visit: <http://www.rvcfire.org/stationsAndFunctions/HazardReduction/Pages/default.aspx>

Growing Communities - In the simplest of terms, the State of California provides specific "direction" to all 58 counties in California as to how they can conduct county business (land use, healthcare, emergency services, budgeting, etc.). What the Legislature approves and the Governor signs becomes the lawful rules for all counties (and often all cities) to adhere to and carry out until rescinded by the Legislature or the Courts. Some years back the State adopted legislation that has made it difficult for cities to annex large areas of unincorporated land and made it nearly impossible for large unincorporated (non-city) communities to incorporate and become their own cities. In the First District, we have two communities with large and growing populations.

continued on page 2

Inside this issue:

Kevin's Corner Continued	2
District #1 Board & Commission Openings	2
Non-Profit Spotlight District Profile	3
Local District #1	4 5 6
Other Information	7 8 9 10 11 12



Follow Us Online!

[www.facebook.com/
SupervisorJeffries](https://www.facebook.com/SupervisorJeffries)

Twitter: @SupJeffries



Continued...

Mead Valley (west of Perris) has somewhere near 20,000 residents, and the Temescal Valley (between Lake Elsinore & Corona) has somewhere around 27,000 residents. Each of these communities is larger than several current cities in Riverside County. They are distinctly different communities with very different lifestyles and standards. The County sometimes struggles to provide these growing communities with basic community services and infrastructure. Similar to the sweeping criminal justice reforms that have already occurred, the State has also essentially changed or eliminated typical single-family home zoning (one home/one lot) and replaced it with the right to build multiple units at current or future single-family homes or home sites. The State has also made it nearly impossible for locals to stop high density housing projects in many neighborhoods. That means the land use and landscape of our traditional bedroom communities is likely to look and feel much different going forward (the land use issue applies within cities as well). For our non-city residents, the overarching issue will quickly become "local control." Simply put, to be or not to be a City. In this future debate, the locals will have to fight for that control.

Your Opinion Matters - If you live outside of city boundaries in Riverside County, please take a few minutes and go online and complete a survey about unincorporated community needs (infrastructure, services, etc.). Information about the "Unincorporated Communities Initiative" and the survey can be found here: <http://www.Rivco.org/uci>

Respectfully,

Kevin Jeffries



Interested in serving your local community?

Perhaps you are more of a regional advocate?

If you live in or have a business in District #1, be sure to look at the list of openings we have below for local commissions.

If you feel you have the time to dedicate to making the district a better place feel free to apply online at www.supervisorjeffries.com, under Boards & Commissions

In Home Support Services (IHSS) - Recipient of IHSS Services—One (1) opening

Woodcrest Municipal Advisory Council (MAC) - Two (2) Alternate openings

First 5 Advisory Committee—Two (2) opening

Riverside County Flood Control Commission—Zone I—One (1) opening

* Riverside Area, see map: <https://rcflood.org/About-the-District/District-Zones/Zone-I>

Non-Profit Spotlight

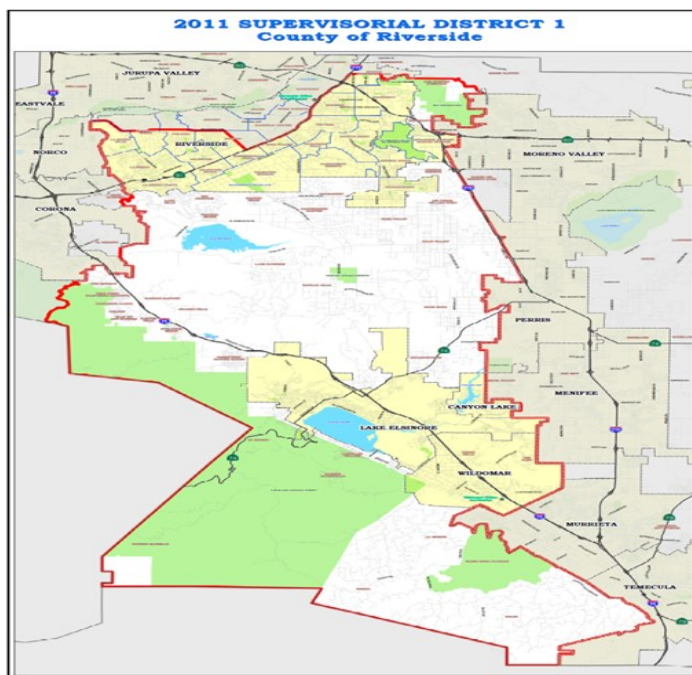
UNITED WAY OF THE INLAND VALLEYS AND INLAND EMPIRE UNITED WAY ANNOUNCE MERGER TO CREATE INLAND SOUTHERN CALIFORNIA UNITED WAY

Inland Empire United Way and United Way of the Inland Valleys have served neighboring communities for many years, but after more than a year of strategic conversations, the leadership and Boards of Directors have agreed that a single organization could have a greater impact on the region. We are excited to announce that we are joining forces to become Inland Southern California United Way (Inland SoCal United Way). This new organization brings together many strengths to serve our community and is comprised of three diverse organizations that have been serving the Inland Region for many years. With this new structure, we are not losing our old identity, but rather we are in a metamorphosis into something stronger, more agile, and better able to serve our community the way they need us in this moment in time.

Inland Empire United Way manages 211 San Bernardino County and United Way of the Inland Valleys includes Community Connect, which manages 211 Riverside County. The 211 call centers for each county will remain separate, but both will continue to be operational 24/7 with the goal of lowering wait times and expanding crisis call service. The merger will enable ISCUW to more effectively deliver programs and services across the Inland Southern California region.

Our new and expanded organization will offer a regional campaign approach for our corporate partners and share a consistent regional story about our role in the community. In fact, partnership between our United Ways was responsible for establishing the Inland SoCal COVID-19 Fund that has sought to meet the needs of those affected economically by the impact of the pandemic through direct assistance payments. The Fund has seen notable successes including a four-million-dollar anonymous donation, and support from several local companies.

For more information about Inland SoCal United Way, visit: www.inlandsocaluw.org/faq



First District Profile

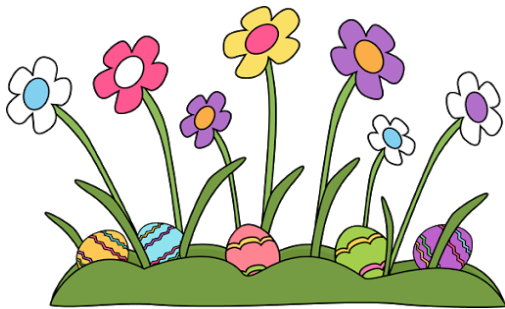


Kevin Jeffries was elected in November 2012 to represent the residents of the 1st Supervisorial District on the Riverside County Board of Supervisors. This district covers the cities of Riverside, Lake Elsinore, Canyon Lake, and Wildomar, and unincorporated communities including Woodcrest, Lake Mathews, Mead Valley, Temescal Valley, Good Hope, Lakeland Village, El Cariso, Meadowbrook, La Cresta, Tenaja, DeLuz and Spring Hills.



Deleo Spring Festival Drive Thru Event 3/20/21

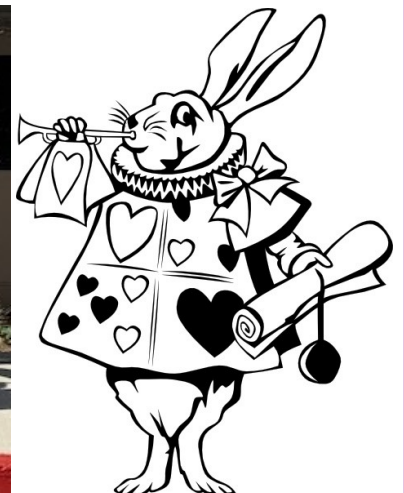
The Drive-Thru Spring Festival event was a first for the community and successfully welcomed approximately 1,000 residents.



Lakeland Village "Rabbit Queen" Drive Thru Event 3/26/21



Studio 395 hosted a festive spring drive thru event for the Lakeland Village Community. Cops for Kids handed out toys, Lake Elsinore Valley Education Foundation provided books and Elsinore Valley Municipal Water District provided bottled water and goodie bags. Thank you to everyone who helped with this event!



Local District #1 Events Meadowbrook / Good Hope Clean Up



The Meadowbrook / Good Hope Community Clean Up was a big success this year! We were able to serve 173 customers during the event and even collected 495 tires and 44 mattresses. Residents took full advantage of the opportunity to get rid of bulky items and clean up their yards without having to drive all the way to the landfill.



County launches survey to hear from residents living in unincorporated areas on needed services, programs

The County of Riverside launched a survey to hear from residents living in unincorporated areas about the services and programs that are most in need. The unincorporated communities initiative recognizes that building strong community wellbeing requires critical services and infrastructure.

The survey will be online until April 15th and is also available in Spanish. The results will focus on underserved areas to prioritize projects and services for future budget cycles, starting with the next fiscal year budget that begins on July 1.

“Some of our most underserved communities are those areas that fall within the jurisdiction of the county for their most basic of services,” said Supervisor Kevin Jeffries, First District. “We have an opportunity to make changes that can greatly impact the daily lives of our residents. It’s our duty to hear from them about what the greatest needs truly are and prioritize those projects for funding.”

An unincorporated area is a geographic community that is not within the jurisdictional boundaries of a city, and as a result, is governed at the county level.

The types of services and needs that will be prioritized will be those that improve quality of life for residents and could range from improved utilities and roads to social services and public protection.

For more information and to take the online survey, visit: <http://www.Rivco.org/uci>

The County of Riverside WANTS TO HEAR FROM YOU!

Please take a moment to complete the **Unincorporated Community Initiative (UCI) Survey** to let us know about your community needs.



As an initiative approved by the Board of Supervisors, this survey will assist in determining the needs to improve the infrastructure and services in the unincorporated communities. Please fill out the survey or email us your responses.



RivCoUCI@rivco.org



rivco.org/uci



OR VISIT



rivco.org/uci



Are you a customer or client of Riverside County's Department of Public Social Services?

Clients and customers of the Department of Public Social Services are being encouraged to take an online survey that will help Riverside County continue improving access to essential health and human services in the coming years.

"Hearing from the people we serve is crucial to our growth and development as an organization," said Sayori Baldwin, assistant county executive officer and director of DPSS. "It supports our commitment to continuous improvement and providing outstanding services that enhance the quality of life for individuals, families and communities."

The confidential survey can be found online at <http://dpss.co.riverside.ca.us/customer-surveys>. The survey is in three parts; Children's, Adult's and Self-Sufficiency programs.

"If you are getting services from our Children's or Adult's divisions, or if you access benefits such as CalFresh, Cal-WORKS or Medi-Cal, we definitely want to hear from you," Baldwin said.

DPSS was established in 1923 with two employees. Today, the department comprises 4,300 social workers and support staff who coordinate with community partners to improve the wellbeing of individuals and families. Last year, DPSS served more than one million residents in Riverside County, the nation's tenth most populous county with 2.5 million people.

Riverside County offers up to \$1,000 per unit to landlords who help families

Program aims to benefit struggling households and landlords during the pandemic
Landlords who rent their units to participating families may qualify for a \$1,000 incentive.

The Riverside County Housing Support Program helps families with children find stable housing while receiving workforce training and supportive services during the pandemic. Officials say they want to house at least 200 families before the program expires at the end of June.

"The increasing cost of rent has had a deep impact on the wellbeing of families in our communities and across the country," said Allison Gonzalez, assistant director of the Self Sufficiency Division at the Riverside County Department of Public Social Services, which administers the program. "A tightening housing market and the economic fallout from the pandemic have increased housing challenges. We are glad our organization is here to help families and landlords find a match," Gonzalez said.

Landlords and/or CalWORKS customers interested in the incentives and supportive services should contact the **CalWORKS Housing Support Program at 833-391-0506 or hsp@rivco.org**.



Riverside County, Lift to Rise, and Inland SoCal United Way, Announce Applications for Next Round of United Lift Rental Assistance

The economic fallout brought on by COVID-19 continues to negatively impact communities through Riverside County. In response, United Lift—a joint effort by Lift to Rise, Inland SoCal United Way, and the County of Riverside—announced that new rental assistance resources will soon become available to keep Riverside County families housed.

The Riverside County Board of Supervisors in February voted to approve \$57,267,219 in emergency rental assistance program funding from the U.S. Department of the Treasury. Combined with previous funding rounds from the CARES Act, Community Development Block Grant funds and other sources, United Lift totals more than \$90 million.

The program is one of the largest per capita allocations of direct rental assistance in the country and one of a handful to operate on a countywide basis. With nearly 2.5 million residents, Riverside County is the 10th-largest county in the United States.

Applications for the next round of United Lift rental assistance will be available to Riverside County residents beginning on Monday, March 8. The program will continue until funds are depleted, or until December 31, 2021, whichever happens first.

This year, the program will provide one-time rental assistance support to cover up to 12 months of unpaid rent during the period between March 13, 2020 until the time of application, plus an additional three months of future rent. Eligibility is limited to renters in Riverside County with a current lease agreement who are earning 80 percent or below of the area's median income and can document a loss of income due to COVID-19 economic impacts that leave them unable to make their rent. Assistance is provided without regard to immigration status.

Priority will be given to households with incomes less than 50 percent of the area median income, as well as households with one or more adults that have not been employed during the 90 days prior to submitting their application. Landlords with tenants with unpaid debt balances are encouraged to notify their tenants about this program.

More information on eligibility guidelines and the application portal can be found at <http://www.UnitedLift.org>

United Lift partners will conduct extensive outreach through community networks and partnerships to ensure eligible Riverside County residents are aware of the available rental assistance and have all of the information they need to successfully apply. In-person application events will be scheduled for this spring and beyond. Staff and volunteers are currently processing a waitlist of over 3,000 households who applied for, but did not receive, the first round of United Lift assistance in 2020.

RIVERSIDE COUNTY

Virtual

JOB FAIR

PRESENTED BY



APRIL 20 | 9AM - 12 PM

JOB SEEKERS JOIN US AT THIS NO COST VIRTUAL COUNTYWIDE JOB FAIR!

EMPLOYERS DON'T MISS YOUR CHANCE TO CONNECT WITH RIVERSIDE'S TALENTED WORKFORCE

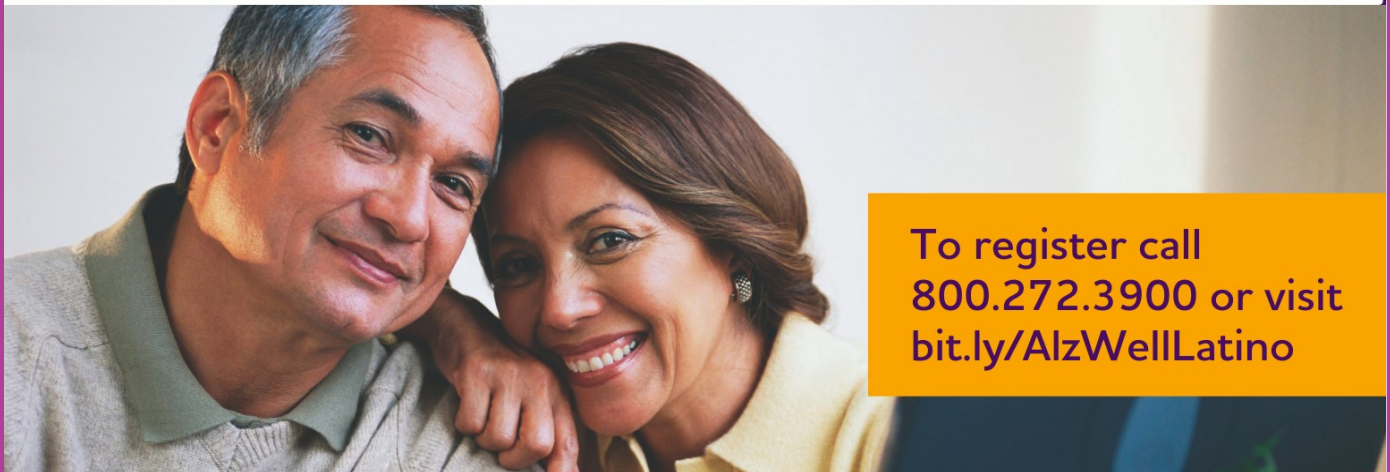
REGISTER HERE >

FOR MORE INFORMATION PLEASE CONTACT EMPLOYERSERVICES@RIVCO.ORG | 951.955.3046

THIS WIOA TITLE I FINANCIALLY ASSISTED PROGRAM OR ACTIVITY IS AN EQUAL OPPORTUNITY EMPLOYER/PROGRAM. AUXILIARY AIDES AND SERVICES ARE AVAILABLE UPON REQUEST TO INDIVIDUALS WITH DISABILITIES. PLEASE CALL 951.955.3100, 951.955.3744 TTY, CA RELAY 711, OR ADACoordinator@rivco.org 5 TO 7 DAYS IN ADVANCE.

AGING WELL FOR LATINOS

PRESENTED BY **alzheimer's association**[®]



To register call
800.272.3900 or visit
bit.ly/AlzWellLatino

**Saturday, April 17
10 - 11:30 AM**

VIRTUAL PRESENTATION (in English)

A PANEL DISCUSSION FEATURING:



JORGE LIPIZ, MD
Neurologist
Kaiser Permanente-
Riverside

Join us for an education program for **Latinos** about reducing risk for cognitive decline by learning the 10 warning signs of dementia and tips to live a healthier lifestyle.

Keep your brain and body healthy as you age while learning about reducing your risk for dementia. Get tips and information on nutrition and exercise. This virtual event will help you gain the knowledge and tools to help you plan for healthy aging from head to toe.

To register call **800.272.3900**
or visit bit.ly/AlzWellLatino.

IN PARTNERSHIP WITH:



Mead Valley Community Center Operated by The Grove Presents



SATURDAY, APRIL 3
11 AM - 2 PM

PICTURES WITH THE EASTER BUNNY
BRING YOUR OWN CAMERA

EASTER EGGS FOR ALL KIDS
KIDS NEED TO BE PRESENT

PARTICIPANTS MUST REMAIN IN VEHICLES

Mead Valley Community Center
 21091 Rider St • Perris, CA 92570 • 951-210-1580
SE HABLA ESPAÑOL

