

## Kevin's Corner



### Red Ink Continues

The bad news: the structural deficit plaguing Riverside County will continue into the new fiscal year. The good news (sort of): it will be slightly less. In the budget year that just ended, deficit spending reached roughly \$1.1 million per week. In the new fiscal year, deficit spending will continue, but at roughly \$865 thousand per week. In government terms, that is an improvement. In private sector terms, that is bankruptcy. As critical as I have been about our past spending (both big and small), I have to admit that I have seen a dramatic improvement in the past six months as far as curtailing our excessive spending habits. Can more be done? I absolutely believe so. For the past several years, we (Riverside County) have enjoyed a fairly strong and rebounding economy. Just look at our low unemployment numbers, increased revenue totals, and the congestion on our freeways caused by commuters trying to get to work. My concern remains that if your county government is not able to balance the books while the economy is strong, how in the world will it be able to do so when our economy and revenues slow down. Before you send me a nasty-gram about my pay and benefits contributing to the problem, I have declined to accept every pay increase since being elected in 2012. I have declined to accept stipends to attend other agency meetings. I have also refused to accept a taxpayer-funded pension, and I do not spend your tax dollars on out of town junkets and travel. Stay tuned - more to come.

### Fees Encouraging Warehouses

For at least 4 years I have been questioning, objecting and raising he## over a particular group of new development fees. All new development (homes, apartments, commercial, industrial, etc.) in Riverside County pays certain fees unique to that type of construction to help pay for needed facilities and infrastructure. While specific fees for transportation projects are based on studies to determine the likely impacts to our roads and freeways, it does not take a rocket scientist to figure out that the lower the fee, the more likely you are to attract that type of new growth. The higher fee, not so much. One of the absolute lowest fees charged in western Riverside County is for – wait for it – warehouses! One of the highest fees paid is for retail commercial (you know – where many jobs are created). So recently, a new study was produced for the regional government authority that levies these fees and it recommends the fees for retail commercial should go up an additional 17%, while Industrial should only go up by 3%. I ran some quick calculations and figured out that a newly built 10,000 square foot hardware store (say about the size of an ACE hardware) will pay \$123,000 just for this one transportation fee. If, on the other hand, say an international on-line firm that uses warehouses to ship its products were to build that exact same 10,000 square feet as a warehouse (recognizing it would not be that small) they would only pay \$17,700. So what are the results? We get more warehouses in our county, we have fewer jobs in our county, and we get to build extremely expensive freeway expansions in & out of county so that we can export our daily quota of workers to other counties. It all makes perfect sense! Thankfully, other elected officials are also seeing the insanity of this ongoing practice and are questioning our path.

As always, I look forward to reading your email comments and suggestions.

Respectfully,  
Kevin Jeffries  
First District Supervisor

### Inside this issue:

County Boards & Commissions	2
Supervisor Success Stories	3
Local District #1 Events	4
Non-Profit Spotlight	5
District #1 Profile	5
Upcoming District Events	6

Follow Us Online!

[www.facebook.com/SupervisorJeffries](http://www.facebook.com/SupervisorJeffries)

Twitter: @SupJeffries

Instagram:  
supervisor\_jeffries



## County Boards and Commissions Appointee Profile

*Each month, the Jeffries Journal highlights some of the Supervisor's nearly 100 appointees on Boards and Commissions in the county, to provide an insight into the kind of service opportunities that exist, and the people who have chosen to serve.*

### **Temescal Valley MAC** **Eric Werner, Chairman**



#### **What does your commission do?**

The Temescal Valley Municipal Advisory Council acts as a conduit of information between the community, various governmental agencies, and the 1st District Supervisor's office and staff. We listen to the concerns of the community and work diligently to find answers and secure resources to help ensure that the community is getting accurate and up to date information. Additionally, the TVMAC provides the Supervisor's office, the County of Riverside and other agencies like CHP, Cal-Fire, Caltrans, RCTC with ground level feedback on everything from development projects to public safety. All of this is done with the hope and expectation that we are helping to create a better place to live, work, and play in the Temescal Valley.

#### **What interested you in serving on the commission?**

Our family has been a part of the Temescal Valley community for over 50 years so we have seen the community change dramatically over that time. I believe that it is vital that we all take an active role in the ongoing growth to ensure that the community grows responsibly. Developers come and go, and those of us living and working in the Temescal Valley have to live everyday with the projects that are approved long after any developers finish construction and leave town. Therefore, by taking a pro-active role in the discussion, review, and feedback of the Temescal Valley's continued growth is the best way for me to participate in helping to shape the future of the Temescal Valley.

# GET YOUR PLAY ON

PARK AND RECREATION MONTH  
JULY 2017



#PlayOnJuly

[www.nrpa.org/July](http://www.nrpa.org/July)

## Supervisor Success Stories



*Each month this column highlights recent successes in Supervisor Jeffries' Office, whether it is assistance for a single citizen dealing with the county bureaucracy, a change in county policy to improve our community, or a promise kept by the Supervisor.*

### Closing County Print Shop Creates Multiple Savings!

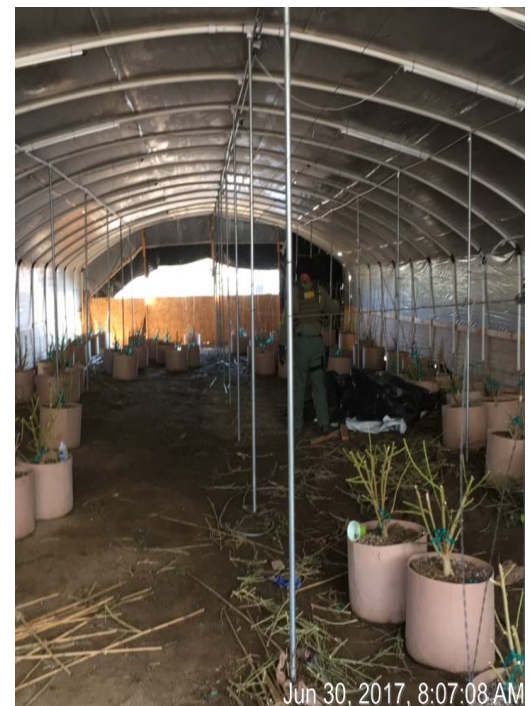
Since taking office in 2013, Supervisor Jeffries has questioned the need for a county operated print shop in every budget cycle, reasoning that we could 1) Save the money we spend on the operation itself, 2) Put money into private sector businesses instead of the county, and 3) Almost certainly save money on the cost of the actual printing itself. This year, the budget shortfall finally led the county to eliminate this department, and some of the savings to the county were very immediately apparent. Our office had requested sending a letter to one of our communities that contained a map showing some upcoming construction issues and a new road that may provide a traffic alternative. The letter would be sent to 2,600 households, and the original quote we received from the county print shop was \$2236 for the two-sided color letter and \$600 for the envelopes. As we were discussing whether to proceed at this cost, we received notice that the print shop was closing and no longer accepting orders, so the Purchasing Department got some private sector bids. The winning bid was \$385 for the letter and \$280 for the envelopes--- 1/4 the cost of the county quote and a savings of over \$1,000! When you multiply that by every other print job in the county, that can add up tremendous savings for taxpayers.

### Marijuana Grow in Lakeland Village Cleaned Up

After several complaints from neighbors and local community leaders, Riverside County Sheriff Deputies and Riverside County Code Officers descended on the grow location off of Grand Ave in Lakeland Village to remove the marijuana plants and address the illegal greenhouses which were built to house the grow operation.

If you see a grow operation in your neighborhood please contact our local Code Enforcement office at (951) 776-3233 or contact your local Sheriff's Department office to advise them of the situation.

Although Proposition 64 was voted into law, it will not take affect until January 1, 2018, and even after that date, there will still be rules and regulations as well as land use criteria which will need to met before anyone can simply open up a grow operation and/or dispensary.



## *Local District #1 Events*

### **Riverside County Transportation Commission (RCTC) Attends Temescal Valley MAC**

Recently Anne Mayer, Director of RCTC attended the Temescal Valley MAC meeting which was held June 14, 2017. Topics of discussion included the addition of carpool lanes along Interstate 15 as well as details about the 91/15 Freeway expansion, which is in its final phases.



### **Midway Jr. Market Nears Completion..... Grand Opening Coming Soon!**



After years and years of being stuck in government red tape, Mr. Shade Awad and his family are finally nearing completion of their renovated family market located on the corner of Markham and Carroll in Mead Valley.

Along with the newly added square footage, and kitchen, which will serve lunch items such as sandwiches, tacos, and burritos the market will also have new parking lot and larger propane tank to service community residents.

Two new businesses will be opening to the rear of the market as well to service the community.

Stay tuned for the grand opening date/time.

## Non-Profit Spotlight

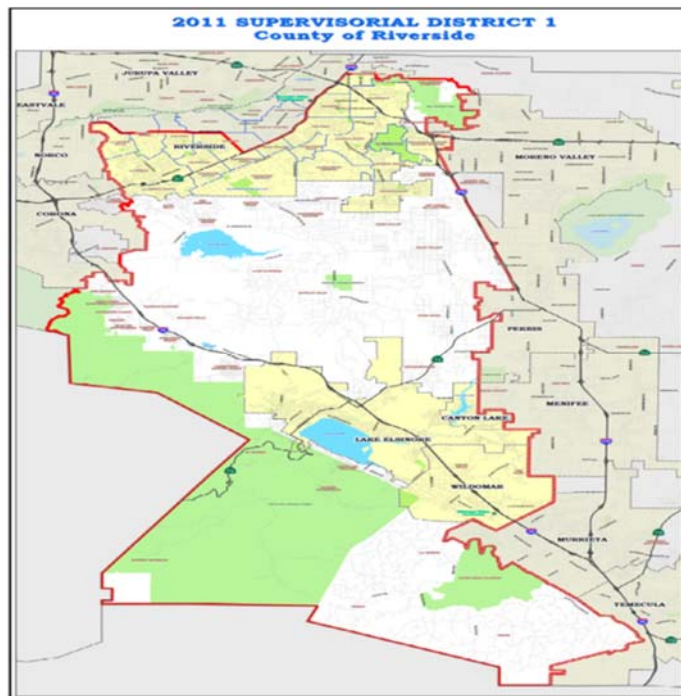
### BEFORE THE TRANSITION, INC.

Before the Transition, Inc. (BTT) was founded by Dorothy Lee in 2009 with the goal of assisting transition-age foster youth by providing appropriate professional attire for job interviews and employment.

Before the Transition, Inc. is a nonprofit organization dedicated to procuring professional clothing and accessories to help veterans, foster and at-risk youth, and seniors attain professional attire to enable them to go back to work.

Many of the individuals who seek the assistance of BTT do not have the financial means to purchase their own suits, but they understand the need to look professional when seeking employment. BTT also assists other community-based organizations with clothing for their participants.

For more information, contact Dorothy Lee at [BTT\\_Beforethetransition@gmail.com](mailto:BTT_Beforethetransition@gmail.com) (562) 318-8592.



### First District Profile



*Kevin Jeffries was elected in November 2012 to represent the residents of the 1st Supervisorial District on the Riverside County Board of Supervisors. This district covers the cities of Riverside, Lake Elsinore, Canyon Lake, and Wildomar, and unincorporated communities including Woodcrest, Lake Mathews, Mead Valley, Temescal Valley, Good Hope, Lakeland Village, El Cariso, Meadowbrook, La Cresta, Tenaja, DeLuz and Spring Hills.*

# MOVIES In The Park 2017

**MOANA**  
July 22<sup>nd</sup>



MOANA

THE FUN STARTS AT 7PM, MOVIE START AT DUSK



FINDING DORY

**FINDING DORY**  
Aug. 12<sup>th</sup>

---

## Deleo Park

GRAB YOUR BLANKETS AND LAWN CHAIRS AND JOIN US FOR A NIGHT OF FILM AND FAMILY FUN UNDER THE STARS! COME ENJOY, BOUNCERS, FACE PAINTING, KONA ICE & LIVE ENTERTAINMENT. BROUGHT TO YOU BY CSA 134.



ED A



MARS



FOR MORE INFORMATION CONTACT [WWW.RIVCOCCSD.ORG](http://WWW.RIVCOCCSD.ORG) OR 866.810-0255 JOIN US ON FACEBOOK AT [WWW.FACEBOOK.COM/RIVCOMARS](http://WWW.FACEBOOK.COM/RIVCOMARS)

# Lake Elsinore Car Cruise





Historic Main Street

**SIZZLIN' SUMMER NIGHTS & COOL CLASSIC CARS**

This summer, cool classic cars will return to Historic Main Street. This is a **FREE** event inviting our community and car enthusiasts to come together to enjoy classic wheels and summer fun.

**JUN 24 | JUL 29 | AUG 26 | SEP 30 | 4 PM - 8 PM**

HISTORIC MAIN STREET IN LAKE ELSINORE | PRE-1975 CLASSIC CARS

TROPHIES, RAFFLES, MUSIC, ART, SHOPPING, DINING AND MORE!

No pre-registration, no fees, just tons of fun! Limited to 150 reserved spots for classic cars. First come, first served. Visit [www.lake-elsinore.org/carcruise](http://www.lake-elsinore.org/carcruise) for more information.

Sponsored by City of Lake Elsinore, Riverside Merchants & Casino, Hill Union - a Spanish Car Store, and Trophies and Repairs. Photo by @spere and the local, @al. Ed@elakeelsinore.org.



## Riverside County

Regional Park and Open-Space District





**Lake Cahuilla**  
SUMMER Camping Special

**June 10th through August 31st 2016**

50% off camping fees PLUS one 2-hour pool session of your choice during normal business hours. Please call the Reservations Office at (800) 234-7275 Monday through Thursday 8am to 5pm and Fridays 8am to 3:30pm (office is closed weekends and holidays). You may also call Lake Cahuilla to make your camping reservations at (760) 564-4712.

Reservations must take place between June 10 and August 31, 2016. Maximum 6 pool sessions per reservation. Pool sessions only valid during stays Friday - Sunday. No refunds or credits due to weather. Temperatures can exceed 100 degrees during these dates. Please check weather forecast before booking your reservation.

Lake Cahuilla Park, 58075 Jefferson Street, La Quinta, CA 92253

## RIVERSIDE COUNTY SHERIFF'S DEPARTMENT



# DISPATCH CAREER FAIR

**WEDNESDAY, JULY 12, 2017**

Hourly presentations and tours from  
**4:00PM to 6:00PM**  
BLYTHE RECREATION DEPARTMENT  
127 S. Main St., Blythe, CA 92225

Tours of the dispatch center and presentations regarding the position and application process will occur every hour from 4:00PM to 6:00PM.

PRESENTATION SCHEDULE:  
4:00PM; 5:00PM; 6:00PM;

**JoinRSD.org**








Due to limited space, dispatch tours will be scheduled by **APPOINTMENT ONLY**.

"WALK-INS" WILL BE ALLOWED FOR PRESENTATIONS ONLY.

To schedule an appointment or if you have any questions, please contact Human Resources at 1-888-Join-RSD or email at [HRSheriffRecruiter@rivco.org](mailto:HRSheriffRecruiter@rivco.org)