

# Jeffries Journal

Volume 5, Issue 12

December 2017

## Kevin's Corner



First, let me say – Thank you! Last month I reported that I could not obtain financial information from my County staff regarding certain revenues generated within unincorporated (non-city) areas of our county. Shortly after that public announcement (and after a great many of you with financial backgrounds emailed me with an offer to help) – Surprise! The needed financial information was obtained and forwarded to me. Below you will see the first round of preliminary numbers. And while these numbers only apply to non-city areas, it is reflective of our county-wide financial challenges:

### Revenues Generated in Unincorporated Areas of the County:

County Share of Unincorporated Property Taxes:	\$53.3 million
County Share of Unincorporated Supplemental Taxes:	\$0.8 million
Unincorporated Share of Motor Vehicle In Lieu Fees:	\$26.7 million
Sales Tax Collected in Unincorporated Areas:	\$27.9 million
Unincorporated Franchise Fees	\$6.9 million

**TOTAL REVENUES: \$115.6 million**

### Expenses for Basic Public Safety Services in Unincorporated Areas of the County:

Sheriff Patrol:	\$92.7 million
Fire Protection:	\$56.5 million
Code Enforcement:	\$6.4 million
Animal Services:	\$11.8 million

**TOTAL EXPENSES: \$167.4 million**

This \$52 million annual gap further illustrates that simply adding “rooftops” to our communities is not going to fix our finances (much less our traffic woes). While it is not a perfect formula (it leaves out businesses in the county), if you divide those numbers by the number of households in unincorporated areas, we bring in an average of \$1029 per household, but spend \$1490. That gap grows even greater when you realize that it is 1) based on the terribly inadequate level of services in our unincorporated communities today, and 2) does not take into account all the other services the county is expected to provide for city and unincorporated residents alike.

Clearly we need to rethink how our county is going to grow. Your county government provides important services to all residents regardless of city or non-city boundaries. Whether it is jail capacity, public defender, prosecutors, probation, child or adult protective

*Continued on page 2....*

### Inside this issue:

Kevin's Corner cont.	2
County Boards & Commissions	3
Local District #1 Events	4
Non-Profit Spotlight	5
District #1 Profile	5
Upcoming District Events	6
Upcoming District Events	7
District #1 Christmas Events	8

Follow Us Online!

[www.facebook.com/SupervisorJeffries](http://www.facebook.com/SupervisorJeffries)

Twitter: @SupJeffries

Instagram:  
[supervisor\\_jeffries](https://www.instagram.com/supervisor_jeffries)



services, animal services, veterans' services, medical clinics, environmental health, waste management, hospital, fire, sheriff – you name it, the county is expected to provide it. With a growing population, the demand for these services not only grows, but so does the demand for additional housing – all while our freeways and many major transportation arteries are pretty much already at a standstill. It's time for your/our local government to start thinking about new ways to approach our challenges. The theory that we could simply grow our way out of these problems has not proven true.

Now to close on a much happier note – Christmas is just around the corner. And as we do every year our office will host open for Holiday Open Houses. A festive social event with a goal of collecting unwrapped toys for needy children in our communities.

**Monday, December 11th, 4pm-6pm**

**County Board of Supervisors' Joint Open House & Toy Drive**

County Building, 5th Floor (4080 Lemon, Riverside)

**Tuesday, December 19th, 4:30pm-6:30pm**

**District 1 Holiday Reception & Toy Drive**

District Office (16275 Grand Ave. Building D, Lake Elsinore, CA 92530)

\*Located at the Lakeland Village Community Center

A full list of unincorporated community holiday events and receptions in the 1<sup>st</sup> District is included at the end of this newsletter.

As always, I appreciate your feedback and comments.

Respectfully,  
Kevin Jeffries



## County Boards and Commissions Appointee Profile

*Each month, the Jeffries Journal highlights some of the Supervisor's nearly 100 appointees on Boards and Commissions in the county, to provide an insight into the kind of service opportunities that exist, and the people who have chosen to serve.*

**District #1  
Woodcrest  
Municipal Advisory Council  
Secretary, Taylor Keen**



### What does your commission do?

The Woodcrest Municipal Advisory Council connects the community with various governmental agencies and our elected political leaders by acting as a conduit to disseminate information to the community and give the community a way to publicly express concerns and have questions answered. Change is imminent and the MAC allows our community to come together in a value-added dialogue about that change. When you attend one of the MAC meetings you will leave with up to date and accurate information involving the community, as well as the tools to stay informed on a daily basis.

### What interested you in serving on your commission?

When my family moved to Woodcrest we fell in love with the rural-city feel. Although I appreciate development and change, I also would like my children to be able to experience the rural part of Woodcrest that I enjoy. I believe strongly in being positively involved in your community, being a part of the advisory council gives me the opportunity to do that. My goal as being part of the commission is to represent my community and help engage a more involved constituent base that loves where they live and feels confident enough to constructively voice concerns in a way that drives positive change.

---

### Riverside County Flood Control Zone 3 Commissioner Opening....

If you are interested in applying for our District #1 Flood Commissioner opening please feel free to fill out an application which can be downloaded at our site ([http://supervisorjeffries.com/opencms/Boards\\_Commissions/Application.html](http://supervisorjeffries.com/opencms/Boards_Commissions/Application.html)). This zone covers the Elsinore Valley, Canyon Lake, and the northern end of Wildomar.



For more information on this position please read more at <http://www.floodcontrol.co.riverside.ca.us/Zone3.aspx> as well.

# Local District #1 Events

## Thanksgiving In Good Hope....

Recently The Grove helped feed several hundred local residents a great Thanksgiving “turkey and all the sides” dinner. Over 300+ were served dinner and dessert, of course, pumpkin pie. Many thanks to the over 50 volunteers from The Grove and the local community who showed up to make this event possible.



**FREE**

**THANKSGIVING DINNER**

SATURDAY, NOVEMBER 18  
1:00PM-5:00PM

COME CELEBRATE AND ENJOY  
THANKSGIVING WITH A FREE DINNER!

TO REGISTER PLEASE CALL STEPHANIE AT 951-943-9126

Moses-Schaffer  
**COMMUNITY CENTER**

21565 Steele Peak Dr, Perris, CA 92570  
951-943-9126 - Se Habla Español

Operated by:  
**THE GROVE  
COMMUNITY  
CHURCH**

# Non-Profit Spotlight

## NATIONAL ALLIANCE ON MENTAL ILLNESS

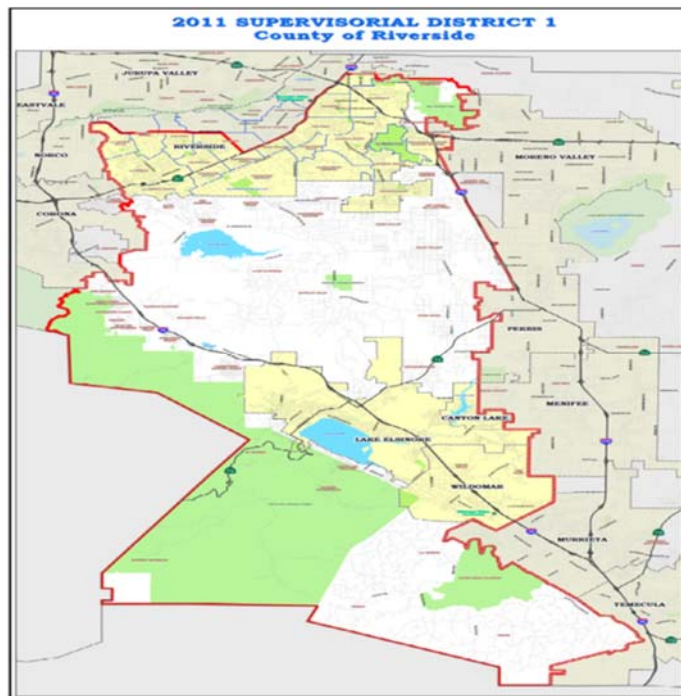


NAMI, The National Alliance on Mental Illness, is the nation's largest grassroots mental health organization dedicated to building better lives for the millions of Americans affected by mental illness. NAMI Advocates for access to services, treatment, supports and research and is steadfast in its commitment to raising awareness and building a community of hope for all of those in need.

Thousands of members and supporters are the face and voice of NAMI – families, individuals, friends and businesses – who come together to celebrate mental illness recovery, to honor those who have lost their lives to mental illness and to combat stigma, promote awareness and advocate for others.

For more information, visit their website at to find a local affiliate near you:

<https://www.nami.org/>



### First District Profile



*Kevin Jeffries was elected in November 2012 to represent the residents of the 1st Supervisorial District on the Riverside County Board of Supervisors. This district covers the cities of Riverside, Lake Elsinore, Canyon Lake, and Wildomar, and unincorporated communities including Woodcrest, Lake Mathews, Mead Valley, Temescal Valley, Good Hope, Lakeland Village, El Cariso, Meadowbrook, La Cresta, Tenaja, DeLuz and Spring Hills.*

Join CSA 134 FOR  
**Snow Day**  
 at Deleo Park

**SATURDAY** **11AM** **SLEDDING RAMPS**  
**DECEMBER 16** **TO 2PM** **SNOW PLAY • CRAFTS**  
 Deleo Regional Park

Cookie Decorating • Giveaways  
 LIFE SIZE SNOW GLOBE  
 SNOWBOARDING SIMULATOR  
 SANTA • TRAIN RIDES

FOR MORE INFORMATION CONTACT [RKROSS@RIVCO.ORG](mailto:RKROSS@RIVCO.ORG) OR 951.955.4816

**"Cookies With Santa"**  
**December 19, 2017** **3:00 to 7:00 p.m.**

**"Village on Grand"**

Lakeland Village Community Center  
 16275 Grand Avenue  
 Lake Elsinore, CA 92530

**EVENTS**

- Cops for Kids "Annual Toy Drive"
  - if you are able, bring a new unwrapped toy
- Girl Scout Troop 1124 will be providing an "ARTivity"
- Santa will make a guest appearance
  - Dress up for Holiday photo "selfies" *Bring your camera*
- STUDIO 395 will provide
  - a variety of cookies and decorating supplies.

Please call 951-471-4500 or 951-471-4407

**Blue Light Ceremony**

**DECEMBER 4, 2017 AT 6:00 PM**  
 PALM DESERT CITY HALL  
 73510 FRED WARING DR, PALM DESERT, CA 92260  
 and  
**DECEMBER 11, 2017 AT 6:00 PM**  
 COUNTY ADMINISTRATIVE CENTER  
 4080 LEMON STREET, RIVERSIDE, CA 92501

RSVP to [Nicole.Wilkinson@riversidesheriff.org](mailto:Nicole.Wilkinson@riversidesheriff.org) or 951.955.2469

A ceremony presented by the Riverside County Sheriff's Department, honoring all Riverside County Peace Officers who have lost their lives in the line of duty. The blue light is symbolic of our remembrance of those officers who have made the ultimate sacrifice and also honors those officers who continue to work today.

RIVERSIDE COUNTY SHERIFF'S DEPARTMENT

JOIN US IN MEAD VALLEY FOR  
**BREAKFAST with SANTA**

**Saturday, December 9, 2017**  
**8 am - 12 pm**

**Free Breakfast**  
**Bring your Camera**  
**Carnival Games**  
**Bounce House**  
**Arts and Crafts**

**Charles Meigs Community Center**  
 21091 Rider St • Perris, CA 92570 • 951-210-1580  
SE HABLA ESPAÑOL

Operated by  
**THE GROVE COMMUNITY CHURCH**

LATINO NETWORK NINETEENTH ANNUAL

# Nuestra Navidad Breakfast

WEDNESDAY, DECEMBER 13, 2017 • 7:30 AM TO 9:00 AM

**STRATTON COMMUNITY CENTER**  
2008 Martin Luther King Blvd, Riverside, CA 92507

**TICKETS**

\$30 LATINO NETWORK PAID MEMBERS  
\$40 NON-MEMBERS

Tickets available through Eventbrite:  
<http://19thannualnuestranavidad.eventbrite.com>  
Or contact Araceli Ruiz  
[aruiz@rivco.org](mailto:aruiz@rivco.org)

Sponsorships Contact:  
Ofelia Valdez-Yeager  
[valdezyeager@sbcglobal.net](mailto:valdezyeager@sbcglobal.net)



**2018 RIVERSIDE COUNTY HOMELESS POINT-IN-TIME COUNT**



HELP CONDUCT THE 2018 HOMELESS POINT-IN-TIME COUNT FOR RIVERSIDE COUNTY!

**Volunteers Can Be...**

- Neighborhood groups
- City or County employees
- Non-profit organizations
- College students
- Community service clubs
- Faith-based institutions
- Social service providers
- ANYONE!

**500 VOLUNTEERS NEEDED!**

**WHAT:** Volunteers are needed to count and survey homeless persons living on the streets within their communities. Volunteers must attend a training session where they will receive instructions on conducting the count and on important safety guidelines.

**WHEN:** The count and survey will take place on **Tuesday, January 23, 2018, between 5:30 a.m. - 9:30 a.m.**

**WHERE:** Volunteers are needed to count in the 28 cities throughout Riverside County.

**WHY:** Information collected from the count and survey is required to continue receiving federal funding for homeless programs, to develop strategies to end homelessness, and to help homeless children and families who are in need.



**COMPLETE VOLUNTEER REGISTRATION ONLINE**  
[www.RiversideHomelessCounts.com](http://www.RiversideHomelessCounts.com)

For questions, contact Donyielle Holley, Riverside County Point-in-Time Coordinator at [RivCoPIT@RivCo.org](mailto:RivCoPIT@RivCo.org) or (951) 358-3844

Riverside DPSS ASH-PLA00H 10/15/17

## JOIN OUR TEAM!

Greeter • Tax Preparer • Site Coordinator



Increase Your Network



Build New Skills



Give back to your Community



Gain Experience

The Volunteer Income Tax Assistance (VITA) Program provides free tax preparation services for individuals with low to moderate incomes. Our tax preparers are IRS certified and trained.

To apply go to: <http://bit.ly/CommunityActionVITAApplication>



Address: 2038 Iowa Ave, Suite B-102  
Riverside, CA 92507  
Website: [www.capriverside.org](http://www.capriverside.org)

Contact: Charles Clinton  
Email: [cclinton@capriverside.org](mailto:cclinton@capriverside.org)  
Phone: (951) 955-6488

JOIN US IN **GOOD HOPE** FOR  
**BREAKFAST with SANTA**

**Saturday, December 16, 2017**  
**8 am - 12 pm**

**Free Breakfast**  
**Bring your Camera**  
**Carnival Games**  
**Bounce House**  
**Arts and Crafts**

Moses-Schaffer COMMUNITY CENTER 21565 Steele Peak Dr, Perris, CA 92570 951-943-9126 • Se Habla Español

Operated by THE GROVE COMMUNITY CHURCH

## 2017 District 1 Holiday Events

- Wed, December 6<sup>th</sup> 3pm-5pm  
**Cookies with Santa**  
 Woodcrest Library (16625 Krameria, Woodcrest)
- Sat, December 9<sup>th</sup> 8am- 12pm  
**Breakfast with Santa**  
 Charles G. Meigs Community Center  
 (21091 Rider Street, Mead Valley)
- Mon, December 11<sup>th</sup> 4pm-6pm  
**County Board of Supervisors' Joint Holiday Reception**  
 County Building, 5<sup>th</sup> Floor (4080 Lemon, Riverside)
- Sat, December 16<sup>th</sup> 8am- Noon  
**Breakfast with Santa**  
 Good Hope Community Center (21565 Steele Peak Drive, Good Hope)
- Sat, December 16<sup>th</sup> 11am-2pm  
**Winter Wonderland**  
 Deleo Sports Park (25655 Santiago Canyon Road, Temescal Valley)
- Tues, December 19<sup>th</sup> 4:30pm-6:30pm  
**District 1 Holiday Reception**  
 \*District Office (16275 Grand Ave. Building D, Lake Elsinore, CA 92530)
- Tues, December 19<sup>th</sup> 3pm-7pm  
**Cookies with Santa, hosted by Studio 395**  
 Lakeland Village Community Center (16275 Grand Ave, Lake Elsinore)



We are supporting the Spark of Love Toy Drive and the Cops for Kids Toy Drive at our receptions. It is not a requirement for admission, but if you are able, please bring a new unwrapped toy or sports equipment for underprivileged children in our region.

