

# Jeffries Journal

Volume 4, Issue 9

September 2016

## Kevin's Corner

For all of you who have ever woken up in the middle of the night asking yourself... *What The Heck Does The County of Riverside Do For Me?* Let me offer some not-so simple answers.

First off, when you send that painful property tax check each year to the County Tax Collector - you need to know that only 11 cents on the dollar is actually retained by your county. Lots of other government agencies get a slice of your property tax dollars, leaving little behind for your county (and your city if you live within a city). That's why counties and cities like to attract businesses that additionally generate "sales tax" revenue, but even then, only a few cents of the 8 cent/dollar sales tax is kept by the county or city to provide local services. That's why we as shoppers are encouraged to buy our gas or other purchases in our local community, so that our tax dollars can be reinvested to provide services. Sadly, we get no direct return from income taxes, which sometimes reduces the motivation of local government bean counters to incentivize the creation of high paying jobs instead of retail, though clearly those higher income workers will purchase more goods and more expensive homes.

The County of Riverside provides many services that all 2.3 million residents benefit from, regardless if you live in a city or a non-city (unincorporated) community in the County. Some of the services available or provided to everyone include: County District Attorney (prosecuting the alleged bad guys), Public Defender (defending the alleged bad guys), Corrections--aka County Jails (incarcerating the bad guys), and the Probation Department (monitoring the bad guys who aren't in jail). Then there are all the services for those not in trouble, including: Veterans Services, Office of Aging, County Medical Clinics & Hospital, Mental Health Services, Adult Protective Services, Child Protective Services, Economic Development, County Airports, Regional Parks & Open Space, Public Health, Environmental Health, Registrar Of Voters, Assessor, Assessment Appeals, Flood Control, Clerk-Recorder, Agricultural Commissioner, Department of Public Social Services, Emergency Management (assisting with coordination & delivery of federal, state & local disaster services & supplies), and Waste Resources (landfills) - and a few others I'm forgetting.

For those who live outside of city boundaries, not only can you access all the services above, but the County provides most of the rest of your basic services (other than utilities and schools), including the Sheriff Department, County Fire Department, Animal Services, and Code Enforcement (all four of these services are also provided to many cities via contract services). Additional services provided exclusively to unincorporated communities by the county include Roads, Building & Safety, and Planning.

So even though a majority of our population lives within one of the 28 cities in Riverside County, the County's \$5.3 billion budget serves all 2.3 million residents. But if you added up all those unincorporated residents who rely exclusively on county services, they would be the largest city in Riverside County, including almost 350,000 residents (City of Riverside coming in second, with a population of almost 320,000). In fact, if you just took the 110,000 unincorporated residents in my district, they would make up the 4<sup>th</sup> largest city in the County, behind only Riverside, Moreno Valley, and Corona (numbers based on 2013 census estimates).

What all that means, is that my job as Supervisor is to be sure we are taking care of the majority of the population of my district that lives in cities, without sacrificing the needs of the large number of unincorporated residents who rely entirely on County services. My staff and I are dedicated to making sure that County services are delivered professionally, cost effectively, and that you can access the services you are paying for as taxpayers—at least within the budget available to us today!

As always, I welcome your comments, questions, and complaints,

Respectfully,  
Kevin



### Inside this issue:

County Boards & Commissions Appointee Profile	2
Supervisor Success Stories	3
Local District #1 Events	4
Non-Profit of the Month	5
District #1 Profile	6
Upcoming District #1 Events	7
Lake Elsinore State of The City Event	8

Follow Us Online!

[www.facebook.com/  
SupervisorJeffries](http://www.facebook.com/SupervisorJeffries)

Twitter: @SupJeffries

Instagram:  
supervisor\_jeffries



## County Boards and Commissions Appointee Profile

*Each month, the Jeffries Journal highlights some of the Supervisor's nearly 100 appointees on Boards and Commissions in the county, to provide an insight into the kind of service opportunities that exist, and the people who have chosen to serve.*

### **Sandy Isom, Commissioner** **General Plan Amendment Commission** **(GPAC)**



#### ***What does your board do?***

The General Plan Advisory Committee (GPAC) serves as one of the primary channels for making recommendations to the Riverside County Board of Supervisors on the 2016 General Plan Foundation Amendment Cycle. The County General Plan is based on five Foundation Components, or major categories of Riverside County land use: Community Development, Rural, Rural community, Agriculture and Open space. This is explained in detail on page I-6 in the General Plan Introduction.

The purpose of the (GPAC) is to provide recommendations on milestone decisions to the County Board of Supervisors and to provide guidance to County Planning staff and consultants preparing technical studies where warranted for matters pertaining to a full General Plan update should the County move forward with one.

The Foundation General Plan Amendment (FGPA) process is intended to be big picture evaluation or an early read of the overall appropriateness of the proposed Foundation Changes. At this point in the process, the applications contain no specific implementing project or technical studies. Following an initial review by the GPAC and then the Planning Commission (PC), the FGPA's will move to the Board for an initiation determination. Staff's report to the Board will include the GPAC's and the PC's recommendation along with a staff recommended action.

#### ***What interested you in serving on the board?***

Community has been a passion of mine most of my life. In the late 1990s, development began knocking on the door of Temescal Valley. A small group of individuals in the community determined that they had a vision for the community and that it would be best to work with the developers to convey this vision. At about the same time the County was working on expanding the County Community Plan structure into a countywide General Plan. I was very fortunate to have the opportunity to be involved with this process, and at the same time, integrate this into the new development coming our way. I have to admit we were all on a learning curve, although I believe the outcome has been extremely positive, in that the County developed an outstanding General Plan with input from the community, the developers had a structured understanding of the plan and the policies, and the community had the opportunity to establish a relationship with the County and developers in order to convey their vision.

I am extremely honored to serve on the GPAC and will do so with a commitment and sensitivity to the community, the developers who invest in our communities and a deep respect for our Riverside County General Plan.

**DON'T WAIT.  
COMMUNICATE.**      **MAKE YOUR  
EMERGENCY  
PLAN TODAY.**

**SEPTEMBER IS NATIONAL PREPAREDNESS MONTH!**



[www.ready.gov/September](http://www.ready.gov/September)  
#NatlPrep



AMERICA'S  
**PrepareAthon!**

Ready



# Supervisor Success Stories



*Each month this column highlights recent successes in Supervisor Jeffries' Office, whether it is assistance for a single citizen dealing with the county bureaucracy, a change in county policy to improve our community, or a promise kept by the Supervisor.*

## Local Roads Get Paved!!

After several years of internal effort and community meetings, Mapes Road and Norma Street were finally paved! Residents of Norma Street who were stranded during the flooding event of 2015, had met several times with our office and county Transportation representatives to ensure everything was in place to bring the road into compliance in order to be paved. Residents were ecstatic to see the tractors and paving trucks show up to complete the final process.

On Mapes Road, the newly paved portion of the road completes the paving project from where the City of Perris had stopped, to the existing paved road on the western end of Mapes which connects to Betty Road, and then on to Highway 74. Like the residents of Norma Street, several of them had met with our office to ensure that the final portion would indeed be paved and to review timelines for the process to begin. Locals were happy to have the road completed. Huge thank you to our Transportation Department for all their help! Great job, team!



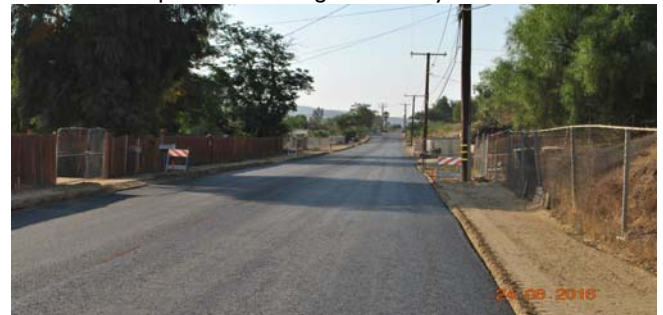
Mapes Road looking west



Mapes Road looking east to City of Perris



Paving Norma Street early in the morning



Norma Street looking south...freshly paved.





## Local Community Events in District #1

Over 300+ local residents showed up on August 9th to the “Back To School” backpack giveaway held at the Mead Valley Community Center. Several organizations, such as Sam’s Club, Riverside County Libraries, Dr. Javier Rios’ office, Community Action Partnership (CAP) and DPSS were on hand to help fill the backpacks with goodies for the kids, too. Free bags of groceries were given to all in attendance as well. Big thank you to all who participated!



Riverside County Parks presents:  
**BACK TO SCHOOL**  
**FREE EVENT!**  
August 9, 2016 | 3pm to 6pm  
**FOOD - GAMES - BOUNCERS**  
**BACKPACK GIVEAWAY!**  
For Ages 5-18 only While supplies last  
Sponsored By:  
Riverside County Parks, Family Resource Center, Office of the Sheriff, Alibertos, Community Action Partnership  
Charles Meigs Senior Center  
21091 Rider Street, Mead Valley, CA  
Call (951) 210-1580





# Local Community Events in District #1

HOSTED BY THE LAKELAND VILLAGE ADVISORY COUNCIL

## Lakeland Village Town Hall

**INVITED COUNTY DEPARTMENTS INCLUDE:**

- RIVERSIDE COUNTY BOARD OF SUPERVISORS
- RIVERSIDE COUNTY FIRE/CALFIRE
- RIVERSIDE COUNTY SHERIFF
- CODE ENFORCEMENT
- EMERGENCY MANAGEMENT FOR RIVERSIDE COUNTY
- ANIMAL SERVICES
- VETERANS SERVICES
- OFFICE ON AGING
- ECONOMIC DEVELOPMENT AGENCY
- WORKFORCE DEVELOPMENT
- RIVERSIDE COUNTY PLANNING DEPARTMENT
- RIVERSIDE COUNTY DISTRICT ATTORNEY'S OFFICE
- WORKFORCE DEVELOPMENT

**ADDITIONAL DEPARTMENTS & AGENCIES PRESENT:**

- RIVERSIDE COUNTY ENVIRONMENTAL HEALTH & TRANSPORTATION & LAND MANAGEMENT AGENCY
- RIVERSIDE COUNTY TRANSPORTATION COMMISSION
- RIVERSIDE COUNTY FLOOD CONTROL AND WATER CONSERVATION DISTRICT
- SOUTHERN CALIFORNIA GAS COMPANY
- SOUTHERN CALIFORNIA EDISON
- CR&R
- OFFICE OF ASSEMBLYWOMAN MELISSA MELENDEZ
- OFFICE OF SENATOR JEFF STONE
- RIVERSIDE TRANSIT AGENCY
- SOUTH COAST AIR QUALITY MANAGEMENT DISTRICT
- ELSNORE VALLEY MUNICIPAL WATER DISTRICT
- WESTERN MUNICIPAL WATER DISTRICT
- CITY OF LAKE ELSNORE
- ELSNORE VALLEY CEMETERY DISTRICT



Wednesday, August 24, 2016

6:00pm-8:00pm  
(Doors open at 5:30pm)

Lakeland Village Community Center  
16275 Grand Avenue  
Lake Elsinore, CA 92530

On August 24th, 2016, residents from Lakeland Village packed the house at the new Lakeland Village Community Center to visit with Supervisor Kevin Jeffries, speak with county departments and take a look around the new community center.

Many thanks to our departments who showed up, such as Veterans Services, TLMA Permit Assistance Team, Riverside County Fire & Sheriff's Depts., County Parks, Riverside County Transportation Commission, Animal Services and many more!

If you were unable to attend the event, feel free to stop by and see the new community center, Monday-Friday 10am-4pm, and see all the great programs available for the community.



# Non Profit Spotlight

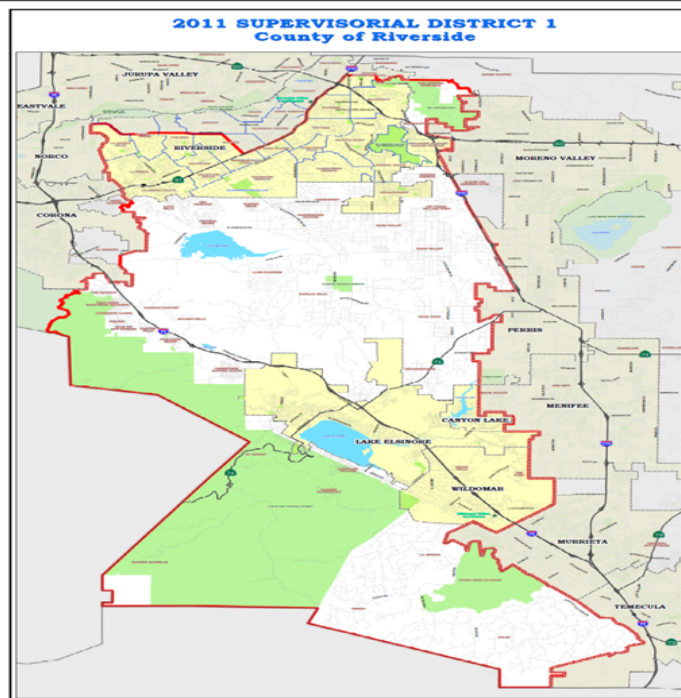
## CALICINTO RANCH



Fourteen years ago, Calicinto Ranch created and began a specialized program for children whose parent(s) are incarcerated. The Apple Seed Kids and Achievers Leadership Teens Program provides year round programs and events for children whose parents are incarcerated with a mission to give these children positive life changing experiences to break the cycle of crime for generations to come.

Calicinto Ranch has served as an amazing refuge offering hope, encouragement, compassion, love, and foundational learning for children and their families, serving 6,500 children to date. Calicinto Ranch offers a summer camp experience for these youth with activities such as animal care, horseback riding, character development, vocations instruction, positive law enforcement interaction and other fun ranch activities.

If you know of a child that could benefit from the programs at Calicinto Ranch, please contact them at (951) 654-6838 or visit their website at <http://www.calicintoranch.org/>.



## First District Profile



*Kevin Jeffries was elected in November 2012 to represent the residents of the 1st Supervisorial District on the Riverside County Board of Supervisors. This district covers the cities of Riverside, Lake Elsinore, Canyon Lake, and Wildomar, and unincorporated communities including Woodcrest, Lake Mathews, Mead Valley, Temescal Valley, Good Hope, Lakeland Village, El Cariso, Meadowbrook, La Cresta, Tenaja, DeLuz and Spring Hills.*





Come to our next  
**Mobile Medical Clinic  
 Food Bank and Eye Clinic**

no-cost  
 urgent care services.

**Saturday, September 10th  
 10 a.m. - 2 p.m.**

Moses-Schaffer Community Center  
 21565 Steele Peak Dr., Perris, CA 92570



Food bags will be given away until food runs out!

**YOU ARE INVITED!  
 SEPTEMBER 15, 2016**



THE  
*Wonderful World*  
 of  
**PROCUREMENT**

**12TH ANNUAL  
 RIVERSIDE COUNTY  
 PURCHASING SEMINAR**

HOSTED BY: COUNTY OF RIVERSIDE  
 PURCHASING & FLEET SERVICES  
 DIRECTOR: LISA BRANDL



**JEFFREY A. BARNES  
 "DR. DISNEYLAND"**  
 TOPIC: HOW TO BE  
 THE HERO IN YOUR  
 OWN STORY

CRESTMORE MANOR  
 4600 CRESTMORE RD.  
 RIVERSIDE, CA 92509

THURSDAY, SEPTEMBER 15, 2016

REGISTRATION: \$119  
 ADDITIONAL FEES MAY APPLY  
 7:30AM-8:00AM  
 (CONTINENTAL BREAKFAST INCLUDED)

SEMINAR:  
 8:00AM-4:00PM  
 (LUNCH INCLUDED: 12:00PM-1:00PM)

EARN: 7 UPPCC HOURS & 7 NCMA  
 CPE HOURS

**MORNING SESSION  
 TOPICS & SPEAKERS**  
 DISASTER PURCHASING: LOCAL  
 GOVERNMENT FISCAL LIFE OR DEATH  
 MICHAEL MARTINET  
 THE MARTINET GROUP, LLC.

**NOTHING IS WRONG WITH YOUR  
 VENDOR/SERVICE CONTRACT  
 (UNTIL THE UNEXPECTED HAPPENS)**  
 CHRISTOPHER FALLON, MBA, MS, CPE, CIE  
 LIEBERT CASSIDY WHITMORE

**THE PROCUREMENT PROFESSIONALS  
 GUIDE TO SURETY BONDING**  
 TRACEY LAWRENCE-COLLINS  
 HEIS SURETY AND INSURANCE SERVICES, INC.



RIVERSIDE COUNTY SHERIFF'S DEPARTMENT



**HIRING  
 SEMINAR**

WEDNESDAY, SEPTEMBER 14, 2016

5:00p.m. & 6:30p.m. Presentations  
 MEAD VALLEY COMMUNITY CENTER  
 21091 Rider St., Perris, CA 92570

Two presentations regarding available positions and the application process will occur. The selection process and basic academy will be discussed.

Pre-Screen Examinations for Deputy Sheriff and Correctional Deputy will be administered. Walk-ins are welcome.

If you have any questions, please contact Human Resources at 1-888-Join-RSD or email at HRSheriffRecruiter@rc-hr.com



JoinRSD.org



**COMMUNITY CLEAN-UP**

**Lakeland Village**  
 Saturday, September 24, 2016  
 8:00 am to 12:00 pm



**Drop-off Location:**

Lakeland Village Middle School  
 18730 Grand Avenue, Lake Elsinore, CA 92530

**Acceptable Items**

- **Tires:** Per state law, please only transport 9 tires per trip. Please call Riverside County Waste Management Department for a waiver if needed. Tires must be less than 4ft in diameter & weigh less than 200 lbs.
- **Furniture:** Sofa beds, couches, tables, chairs, mattresses, box springs and patio furniture.
- **Large Appliances:** Washing machines, dryers, stoves refrigerators, water heaters, air conditioners and dishwashers.
- **Tree Limbs and Branches:** Should not exceed 18 inches in diameter or 3 feet in length. Please make sure tree limbs are bundled and tied together.
- **Electronic Waste (E-Waste):** Computers, monitors, printers, old televisions and other electronic devices with a plug or circuit board.
- **Other Items:** Bicycles, barbecues, swing sets, and small appliances

**Unacceptable Items**

- Fluorescent light bulbs
- Pesticides/Fertilizers
- Weed Killers/Herbicides
- Rodent Poisons
- Latex, Oil, or Water based Paint
- Batteries
- Motor Parts
- Solvents/Gasoline
- Transmission/brake fluid
- Bleach/tub & Tile Cleaners
- Empty Drums
- Anti-Freeze
- Pool Chemicals
- Engines
- Motor oil and Other Hazardous
- Concrete or construction/demolition materials

NOTE: Does not include disposal of industrial, business, or household hazardous waste, building materials, or household trash. If you need additional information please contact Riverside County Department of Waste Resources at (951) 486-3200. Alternate formats available upon request.







## It's that time of year again!

*Join us to learn about all of the amazing things taking place in the City of Lake Elsinore – one of the fastest growing cities in the state.*

For the last several years, the City has made tremendous strides in our pursuit of becoming the ultimate destination to live, work, play, build futures and fulfill dreams. We still have a long way to go to achieve this vision. To do so, we have to prepare and plan for our future.

Much like training for a marathon or choosing to live a healthier lifestyle, this takes an unwavering commitment, persistence and ongoing motivation to remain focused on the goal. Therefore, the City of Lake Elsinore is getting "Fit for the Future" by taking a look at the obstacles before us and creating a plan of action to ensure long-term success.

*Don't miss this year's event to find out how we are getting "Fit for the Future" as we prepare to take our rightful place in Southwest Riverside County!*



**When:** Thursday, September 29, 2016

**Time:** 4:30 p.m. Cocktails and Appetizers  
5:30 p.m. Mayor's Address

**Location:**  
Pins N' Pockets  
32250 Mission Trail  
Lake Elsinore, CA 92530  
[Get Directions](#)

**Cost:** \$40 per person  
\$750 for a Reserved Table of 8



**Honorable Mayor  
Brian Tisdale**

*Seating is limited! Please reserve your seat today.*

[Click here to purchase your tickets](#) or call 951-245-8848  
RSVP by September 23, 2016

**RSVP Now**

Presented by the Lake Elsinore Valley Chamber of Commerce in partnership with the City of Lake Elsinore.