

Jeffries Journal

Volume 4, Issue 10

October 2016

Kevin's Corner



Inside this issue:

| | |
|---|---|
| County Boards & Commissions Appointee Profile | 2 |
| Supervisor Success Stories | 3 |
| Local District #1 Events | 4 |
| Non-Profit of the Month | 5 |
| District #1 Profile | 5 |
| Upcoming District #1 Events | 6 |
| Woodcrest Town Hall | 7 |
| New Mead Valley Community Clean Up | 8 |

Follow Us Online!

[www.facebook.com/
SupervisorJeffries](http://www.facebook.com/SupervisorJeffries)

Twitter: @SupJeffries

Instagram:
[supervisor_jeffries](https://www.instagram.com/supervisor_jeffries)



Given our county budget situation, when every dime counts - you should probably start counting them. As I have mentioned before, the annual budget for the County of Riverside is around \$5.3 billion. A significant amount of the \$5.3 billion is spent for state and/or federally funded, social service related programs. When I mention the following penny-pinching spending issues, you may not see it as such a big deal in the big budget picture, but I honestly suspect that if I was spending (or losing) money that came directly from your personal bank account, you might raise an eyebrow.

Property #1: The Board was asked to approve funding for an additional 59 parking stalls at an existing county facility. The successful contractor estimated that actual construction costs would be \$166,000. The County's cost for design, management, consultants and contingencies added an additional \$117,000, almost as much as the actual cost to physically add parking stalls.

Property #2: The County has a surplus property with an old building that it decided to sell to another government entity for a total of \$190,000. However, the county costs to process the sale, maintain it until sold and survey it, plus escrow and appraisal, will all eat up over \$50,000 of the sale proceeds.

Property #3: The Board was asked to approve construction of a new 500-foot long sidewalk near a school site. The successful contractor estimated actual construction costs would be roughly \$188,000. However when the costs for the surveys, environmental review, design, right-of-way, engineering and inspections, the \$188,000 construction project quickly reached a projected \$430,000.

In all of the above cases the departments were working within standard government project procedures (at least in California). All the significant extra costs are not seen as anything unusual when working within government. It's only when you compare it to private sector projects that you really see how our hard earned tax dollars are spent so inefficiently. What really hurts our pocketbooks isn't even the cases mentioned above. If you spent just a few minutes looking at all the claims and lawsuits (successful or not) against the County of Riverside, you would come unhinged over the tens of millions of our tax dollars that are drained away each year from actual services to our communities.

In 2015/16 claims paid for Worker's Compensation reached \$18 million.

In 2015/16 claims paid for Generally Liability reached \$44 million.

In 2015/16 claims paid for Medical Malpractice reached \$747,000.

Fortunately (or unfortunately) we write big checks to an excess insurance carrier that covers a portion (but definitely not all) of the large lawsuits that we county taxpayers would end up paying for – but in the end we are all paying for it with higher premiums.

In closing, I want the taxpayers of the First District to know that my staff and I are always asking, probing, digging and sometimes irritating our county government to be more respectful of all taxpayer funds.

Respectfully, Kevin Jeffries

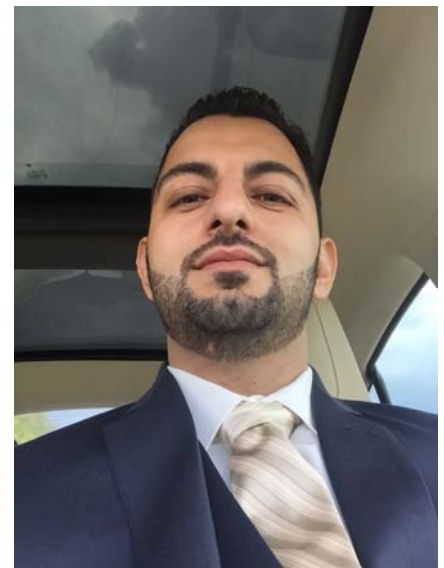
County Boards and Commissions Appointee Profile

Each month, the Jeffries Journal highlights some of the Supervisor's nearly 100 appointees on Boards and Commissions in the county, to provide an insight into the kind of service opportunities that exist, and the people who have chosen to serve.

Shade Awad, Vice-Chair Mead Valley Municipal Advisory Council (MAC)

What does your board do?

Our board listens to the community's voice, and relays the information received to Supervisor Kevin Jeffries. We also assist with local events such as the annual Trick or Trunk event coming up, Breakfast with Santa, and other holiday events. Most importantly, we are able to voice our opinion on new development projects and businesses which are looking to come to Mead Valley, which will help benefit our community.



What interested you in serving on the board?

It's a personal obligation that was instilled in me from my parents. Volunteering is a great way to show my appreciation for the community which I work in on a daily basis. *"The value of a man resides in what he gives and not in what he is capable of receiving."* Albert Einstein



Supervisor Success Stories



Each month this column highlights recent successes in Supervisor Jeffries' Office, whether it is assistance for a single citizen dealing with the county bureaucracy, a change in county policy to improve our community, or a promise kept by the Supervisor.

Local Business Finds The Finish Line

Golden Office Trailer, a local business, was founded in Lakeland Village in the early 1970s. Back then the business was permitted by right and always made sure their employees and customers were taken care of and were always proactive to secure building permits whenever anything was added to their operation. Then in 2010, a complaint to Code Enforcement led to an obscure discovery in County Ordinance 348 which required businesses permitted by right to secure an entitlement after 30 years.



So, Golden Office sent their General Manager to the Riverside County Planning Department to secure an entitlement. After several years, multiple application submittals and more than \$10,000.00 in fees, Golden Office had become frustrated with the process...or lack thereof. They then contacted the Supervisor's office and within a matter of weeks, their request was scheduled for a hearing before the Planning Director and was approved.

Golden Office Trailer is a medium-sized, family owned business which has been a consistent mainstay in the community of Lakeland Village for more than 40 years and with their approval this month they can now rest easy knowing that the company and employees are safe.



Local Community Events in District #1

Moses-Schaffer Community Center gets new paint!

On Columbus Day weekend over 15+ volunteers showed up to assist our office and center staff with re-painting the interior of the Good Hope Community Center. Much of the paint, supplies and even a pizza lunch was donated to those who showed up to give the center a much needed facelift.

Not everything was completed even after two days of work, but both staff and volunteers vow to complete the remaining portion in time for the upcoming holiday events scheduled at the center for the community.

Big thanks for our center director, Stephanie Morales for her assistance and to Giovanni Aguilar and the members of Agape Church who were the contributing force in making this project a reality.

If you are interested in volunteering for one of our upcoming holiday events, please reach out to Stephanie at the center for details on times/dates.



Non Profit Spotlight

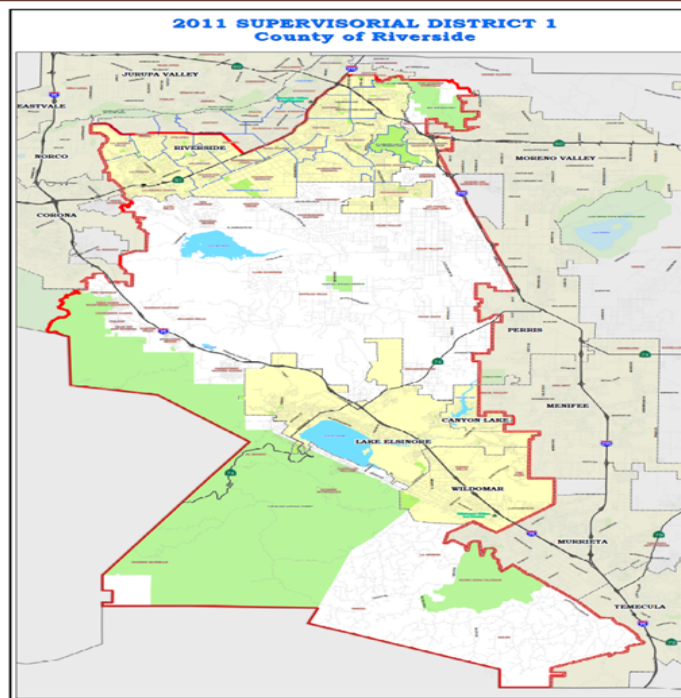
WOMAN WONDER WRITERS



Women Wonder Writers™ (WWW) is a 501(c)(3) nonprofit organization, which implements cultural arts and mentoring programs for youth. WWW is dedicated to supporting juvenile justice and education systems with creative alternatives to suspension, expulsion and incarceration. By connecting our youth with opportunities, resources, professionals, mentors, educators and leaders in the community, WWW believes that no matter one's past or hardships, resilience is possible.

The mission of WWW is to break the cycle of victimization and recidivism through mentorship and creative life skills programs for youth and their families. WWW strives to strengthen youth, their families and the community it serves by empowering youth to be educated, empathetic and expressive, cultivating awareness and advocacy towards social injustices, decreasing student dropout rates thus lowering crime rate, building tolerance & empathy, and working with victims to stop the cycle of victimization & recidivism.

For more information go to www.womenwonderwriters.com



First District Profile



Kevin Jeffries was elected in November 2012 to represent the residents of the 1st Supervisorial District on the Riverside County Board of Supervisors. This district covers the cities of Riverside, Lake Elsinore, Canyon Lake, and Wildomar, and unincorporated communities including Woodcrest, Lake Mathews, Mead Valley, Temescal Valley, Good Hope, Lakeland Village, El Cariso, Meadowbrook, La Cresta, Tenaja, DeLuz and Spring Hills.

Brought to you by RivCoParks

Join us in Lakeland Village for...

MOVIE NIGHT

THURSDAY 5PM-7PM
OCTOBER 27TH, 2016



Lakeland Village Community Center
16275 Grand Ave, Lakeland Village, CA 92530

ACTIVITIES INCLUDE:

- KID FRIENDLY MOVIE
- GHOSTLY TREATS
- WITCHES BREW BEVERAGES

BRING THE FAMILY & WEAR YOUR BEST COSTUMES!



FOR MORE INFORMATION PLEASE CALL: (951) 471-4407

TO VOLUNTEER PLEASE SEND AN EMAIL TO VOLUNTEERS@RIVCOPARKS.ORG

Brought to you by RivCoParks

Join us at Good Hope for...

TRUNK OR TREAT

FRIDAY 6PM-9PM
OCTOBER 28TH, 2016



Moses-Schaffer Community Center
21565 Steele Peak Drive, Perris, CA 92570

BRING THE FAMILY & WEAR YOUR BEST COSTUMES!

ACTIVITIES INCLUDE:

- HAUNTED MAZE TOURS
- SPOOKY CRAFTS
- COSTUME CONTEST
- GAMES AND MUSIC
- JUMPERS
- LOTS OF CANDY!



FOR MORE INFORMATION PLEASE CALL: (951) 943-9126

TO VOLUNTEER AS A GHOUL OR GOBLIN PLEASE SEND AN EMAIL TO VOLUNTEERS@RIVCOPARKS.ORG

Brought to you by RivCoParks

Join us in Mead Valley for...

TRUNK OR TREAT

WEDNESDAY 6PM-9PM
OCTOBER 26TH, 2016



Charles Meigs Community Center
21091 Rider Street, Mead Valley 92570

ACTIVITIES INCLUDE:

- GAMES
- HAUNTED MAZE TOURS
- CHILDREN'S ACTIVITIES
- SPOOKY CRAFTS
- LOTS OF CANDY!

BRING THE FAMILY & WEAR YOUR BEST COSTUMES!



FOR MORE INFORMATION PLEASE CALL: (951) 210-1580

TO VOLUNTEER AS A GHOUL OR GOBLIN PLEASE SEND AN EMAIL TO VOLUNTEERS@RIVCOPARKS.ORG

FALL FESTIVAL

DELEO REGIONAL PARK

TRUNK OR TREAT

SAT 22 OCT

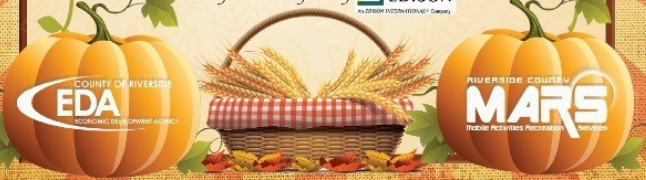
COSTUME CONTEST

4PM-8PM • FREE ADMISSION

FACE PAINTING • CARNIVAL GAMES • LIVE MUSIC
GIVEAWAYS • FALL FUN • HAYRIDES • PRIZES
PUMPKIN DECORATING • BOUNCERS

25655 SANTIAGO CANYON ROAD, TEMESCAL VALLEY
WWW.RIVCOEDA.ORG • 1.866.810.0255

Sponsored in part by EDISON



HOSTED BY THE WOODCREST MUNICIPAL ADVISORY COUNCIL

Woodcrest Town Hall

INVITED COUNTY DEPARTMENTS INCLUDE:

- RIVERSIDE COUNTY BOARD OF SUPERVISORS
- RIVERSIDE COUNTY FIRE/CALFIRE
- RIVERSIDE COUNTY SHERIFF
- CODE ENFORCEMENT
- EMERGENCY MANAGEMENT FOR RIVERSIDE COUNTY
- REGISTRAR OF VOTERS
- ANIMAL SERVICES
- VETERANS SERVICES
- OFFICE ON AGING
- WOODCREST LIBRARY

- ECONOMIC DEVELOPMENT AGENCY
- WORKFORCE DEVELOPMENT
- RIVERSIDE COUNTY PLANNING DEPARTMENT
- RIVERSIDE COUNTY DISTRICT ATTORNEY'S OFFICE
- RIVERSIDE COUNTY ENVIRONMENTAL HEALTH
- TRANSPORTATION LAND MANAGEMENT AGENCY

ADDITIONAL DEPARTMENTS & AGENCIES PRESENT:

- Riverside County Transportation Commission (RCTC)
- Riverside County Flood Control and Water Conservation District
- Southern California Gas Company
- Waste Management, Inc.
- Office of Assemblywoman Melissa Melendez
- Office of Senator Jeff Stone
- Riverside Unified School District



Thursday, November 10, 2016

6pm-7:30pm

(Doors open at 5:30pm)

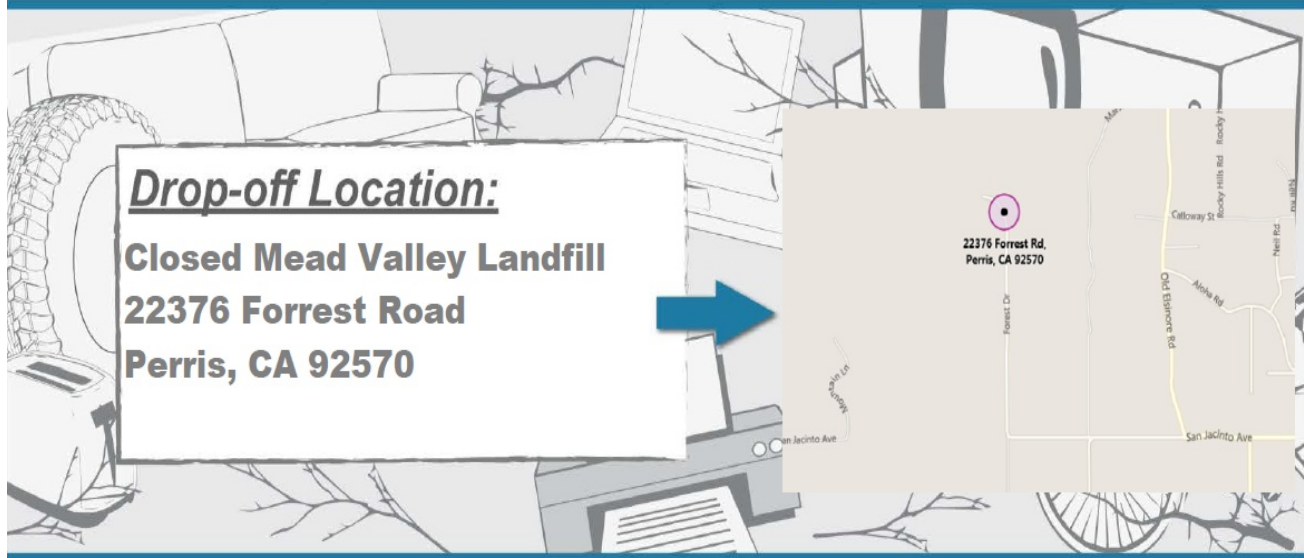
Woodcrest Elementary School
16940 Krameria Avenue
Riverside, CA 92504



COMMUNITY CLEAN-UP

Mead Valley

Saturday, November 12, 2016
8:00 am to 12:00 pm



Acceptable Items

- **Tires:** Per state law, please only transport 9 tires per trip. Please call Riverside County Waste Management Department for a waiver if needed. Tires must be less than 4ft in diameter & weigh less than 200 lbs.
- **Furniture:** Sofa beds, couches, tables, chairs, mattresses, box springs and patio furniture.
- **Large Appliances:** Washing machines, dryers, stoves refrigerators, water heaters, air conditioners and dishwashers.
- **Tree Limbs and Branches:** Should not exceed 18 inches in diameter or 3 feet in length. Please make sure tree limbs are bundled and tied together.
- **Electronic Waste (E-Waste):** Computers, monitors, printers, old televisions and other electronic devices with a plug or circuit board.
- **Other Items:** Bicycles, barbecues, swing sets, and small appliances

Unacceptable Items

- **Fluorescent light bulbs**
- **Pesticides/Fertilizers**
- **Weed Killers/Herbicides**
- **Rodent Poisons**
- **Latex, Oil, or Water based Paint**
- **Batteries,**
- **Motor Parts**
- **Solvents/Gasoline**
- **Transmission/brake fluid**
- **Bleach/tub & Tile Cleaners**
- **Empty Drums**
- **Anti-Freeze**
- **Pool Chemicals**
- **Engines**
- **Motor oil and Other Hazardous**
- **Concrete or construction/ demolition materials**