

**SUPERVISOR
KEVIN JEFFRIES
RIVERSIDE
COUNTY
DISTRICT #1**



Inside this issue:

Kevin's Corner cont.	2
WMWD	2
Supervisor Success Stories	3
District #1 Christmas Events	4
Christmas Events cont.	5
Non Profit of the Month	6
District Profile	6
Upcoming District Events	7
Riverside County Fair	8

Follow Us Online!

[www.facebook.com/
SupervisorJeffries](http://www.facebook.com/SupervisorJeffries)

Twitter: @SupJeffries



Jeffries Journal

Volume 4, Issue 1

January 2016

Kevin's Corner

Do you wish to be taxed per mile or taxed per gallon? Do you or a family member commute an extended distance to work? Are you a contractor or business person who spends a significant amount of time on the road? If you are like the hundreds of thousands of fellow Riverside County residents who drive out of county (or across our county) every business day – then you need to be paying very close attention to a State proposal to look at switching California to a vehicle per mile tax instead of the current per gallon tax.

California motorists already pay the 2nd highest fuel taxes in the nation (on some of the most expensive gasoline in the nation), yet our road conditions are some of the worst in the nation. Unfortunately, our homeowner/property taxes generally do not fund roads, federal transportation money has significantly been cut back, and state contributions to our local roads have trickled down to almost nothing—barely enough for some basic maintenance and small safety improvements. If Riverside were not a “self-funding county,” with Measure A and TUMF, we would likely not be able to make any improvements to our roads at all!

So as our vehicles continue to become even more fuel efficient – the state revenues used to fund our roads are falling even further behind. This has led to an ongoing statewide discussion about possibly switching California motorists over to a per mile tax. Now for the sake of full disclosure, I have not been a supporter of the per mile tax concept, because of the significant financial impact I believe it will have on Riverside County residents who commute to Los Angeles, Orange, or San Diego Counties for work. I'm also concerned that such a system will either be overly intrusive (by tracking our miles automatically) or overly burdensome (by requiring us to regularly come in for odometer readings). Unfortunately, I have not been able to come up with a better idea.

We should support statewide reforms that could significantly reduce the cost to build or repair roads – but that would require overhauling CAL-TRANS and implementing cost saving reforms to environmental and labor regulations, something that a majority of voters in California have been reluctant to vote for. For the past 10 to 15 years, the majority of the State Legislature has also been very reluctant to re-direct general fund tax dollars back into transportation projects, and even the money they put into transportation has increasingly been diverted away from roads—so we need some sort of guarantee that these revenues go where they are supposed to. But that puts us all back to square one – how do we fund our roads going forward, as people switch to electric and natural gas and (someday) even hydrogen vehicles?

If you want to know more details about this issue (per mile road charge) and a future pilot project involving 5000 drivers, you can log onto: www.CaliforniaRoadChargePilot.com

Continued on page 2.....

Kevin's Corner continued...

SCAG (Southern California Association of Governments) is also holding a briefing Wednesday, January 13th at 11am, at the Riverside County Administrative Center, updating elected officials and the public on their Regional Transportation Plan and Sustainability Strategy, where they will discuss all modes of transportation—roads, trucks, trains, transit, and airports. For more information: <http://scagrtpscs.net/>

P.S. There is also a similar workshop Thursday January 14th from 4-6 at the County Building. Information on the meeting is on page 7.

Respectfully,
Kevin Jeffries



Riverside Water Agencies Continue to Ask Customers to Conserve, Be Prepared for El Nino

Riverside, Calif. – While the city's water providers, Riverside Public Utilities (RPU) and Western Municipal Water District (Western), continue to ask customers to conserve water and eliminate water waste, they are also urging customers to prepare for the strong storms that are predicted to come with the El Nino weather event this fall and winter.

"All signs are pointing to Riverside getting some very wet weather," said RPU General Manager Girish Balachandran. "So it is important that all residents take the time to prepare and be ready now, should an event occur later that disrupts water or energy delivery services."

As of Nov. 1, Riverside's RPU water customers will be required to reduce their outdoor watering schedules from three days a week to just two. Customers of Western are still required to reduce outdoor water use by 50 percent; no specific watering days are in effect. But, if the predictions are correct for the El Nino forecast, customers may be able to just turn off all of their outdoor irrigation this winter, as rainfall from the weather event can be enough to let California native, drought tolerant plants thrive for many months.

El Nino can bring with it heavy downpours and high winds that can flood streets and yards, topple trees, power poles and create power outages when tree limbs or debris get tossed in to power lines.

Preparations residents can take include having a supply of sandbags ready to re-direct heavy rainfall or flooding from the property; cleaning out rain gutters and downspouts; checking for and fixing leaks on the roof, near windows and any other cracks that may cause unseen water damage and dry rot; and having an emergency plan, making sure each family member knows the plan, where to meet and how to contact each other.

Additional information on creating an emergency plan, and what to do when outages or emergencies occur, can be found online at ReadyRiverside.com

For additional information about all current water conservation mandates and water saving rebate programs offered by RPU and Western, visit BlueRiverside.com

For information specific to Western customers, visit www.wmwd.com

Supervisor Success Stories

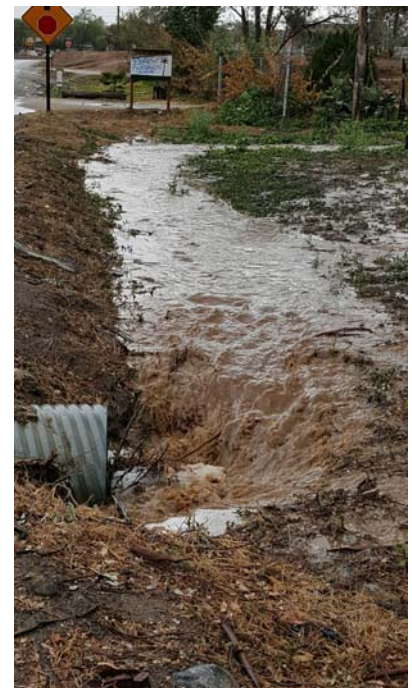


Each month this column will highlight recent successes in Supervisor Jeffries' Office, whether it is assistance for a single citizen dealing with the county bureaucracy, a change in county policy to improve our community, or a promise kept by the Supervisor.

El Niño is HERE! Don't Forget Your Sand Bags....

On January 6th a local business in Lakeland Village was being impacted by some minor flooding associated with our series of El Niño storms...although they had reached out for sandbags from the local fire station they were in need of many more. After contacting our office, firefighters from Station 11 were on scene with an additional 100 sandbags for the business to put to use. Many thanks to our local firefighters who responded quickly.

If you are in need of sand bags or sand, please visit your local fire station or community center before the next storm! Get prepared now!



City of Wildomar Gets Early Christmas Present!

Correcting some administrative errors at the county level, in December the City of Wildomar was successfully issued a check in the amount of \$62,358.00 in relation to an overpayment made on the Clinton Keith bridge project.

After several emails, calls, and research, TLMA, Executive Office and District 1 staff, were able to figure out why the City of Wildomar was not able to obtain their refund earlier in the year even though they had tried repeatedly over the past few months.

City Manager Gary Nordquist was ecstatic to know the City would be receiving the much needed refund, and was very appreciative of everyone who made this possible for the residents of Wildomar.



Christmas events in our communities of District #1...



Breakfast with Santa was packed at the Moses-Schaffer Community Center in Good Hope. Over 600 attended and enjoyed breakfast, games and Santa Claus too!

(Left) Supervisor Jeffries and Willie Moses enjoy the community event.



(Above) Robin Reid and staff from Smooth Transitions Culinary School serve breakfast to some of the over 1600+ who showed up to the Mead Valley Breakfast with Santa event.



(Above) The line to see Santa Claus was a long one after breakfast and games. A great event staffed by over 40+ community volunteers and District #1 staff.



(Above) Some of the local youth who stopped by to see Santa Claus and take part in the Annual Cookies with Santa at the Lakeland Village Elementary School.



(Above) Kids ran from game to game and even the local firefighters took part in assisting the kids with their games at the Cookies with Santa event in Lakeland Village.

More Christmas Events in District #1...

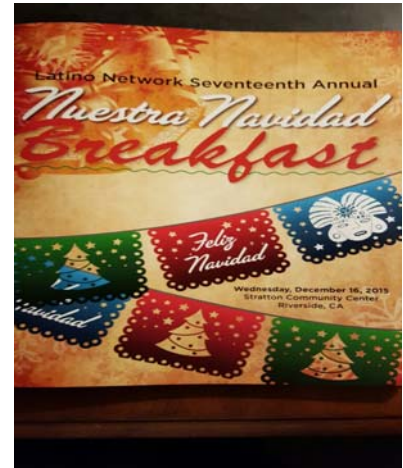
The 17th Annual “Nuestra Navidad Breakfast” was another great event to help benefit the Centro De Niños in Riverside. As usual, if you did not get your tickets early you were left standing!

There was plenty of frijoles, arroz, menudo and agua fresca y horchata for everyone who attended. Some of those who were in attendance included, Councilman Andy Melendrez, Police Chief Sergio Diaz, Mayor Rusty Baily, Councilman Paul Davis, and even Sheriff Stan Sniff.

The live and silent auction had plenty of great items as well. If you wish to attend the Nuestra Navidad Breakfast in 2016 be sure to get on the list quick!!

Many thanks to everyone who helped out with this event and especially to the Latino Network Board of Directors for your tireless community dedication.

Nos Vemos en Navidad 2016!!



The Charles G. Meigs Community Center is officially open!

Our Community Breakfast with Santa in December doubled as the official naming of the community center to the Charles G. Meigs Community Center. On hand for the ribbon cutting were several members of the Meigs Family, Supervisor Kevin Jeffries, Center manager Elizabeth Musial, Yolanda and Gilbert Williams as well as MAC Board members Paz Trevino (Chair), Charles Romero, and Rogelio Rawlins.

Mr. Charles G. Meigs was responsible for donating the land on which the community center was eventually built.



Non Profit Spotlight

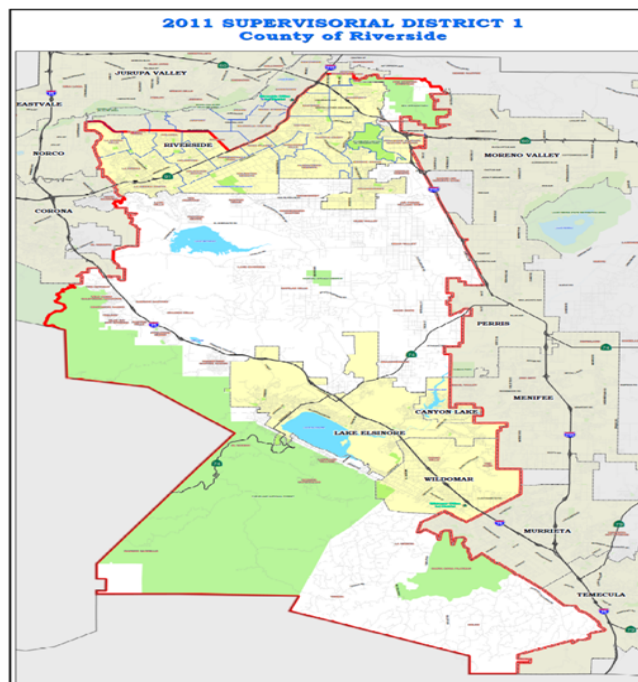
SANTA ROSA PLATEAU EDUCATION FOUNDATION



Santa Rosa Plateau Education Foundation is a place-based, outdoor and nature education provider located at the Santa Rosa Plateau Ecological Reserve in Southwest Riverside County. The Foundation's "No Child Left Inside" environmental education programs offer students in grades 3-12 an opportunity to reconnect with nature through both classroom and on-site learning projects. All programs are offered free of charge to students.

The vision of the Foundation is to encourage children and youth in our communities to become the new generation of environmental stewards with an active understanding and love for the natural world in which they live. Their unique program of funding and developing hands-on environmental programs is designed to encourage innovative projects that inspire, educate and empower children and youth to appreciate, preserve and protect nature.

For more information, contact the Foundation at 800-369-4620 or visit their website at <http://www.srpf.org/>.



First District Profile



Kevin Jeffries was elected in November 2012 to represent the residents of the 1st Supervisorial District on the Riverside County Board of Supervisors. This district covers the cities of Riverside, Lake Elsinore, Canyon Lake, and Wildomar, and unincorporated communities including Woodcrest, Lake Mathews, Mead Valley, Temescal Valley, Good Hope, Lakeland Village, El Cariso, Meadowbrook, La Cresta, Tenaja, and DeLuz

HOUSEHOLD HAZARDOUS WASTE COLLECTION 2016

Permanent HHW Facilities
Open NON-Holiday weekend Saturdays only
For holiday schedule or additional details see RCWaste.org or call (951) 486-3200.

Agua Mansa Permanent HHW Collection Facility
1780 Agua Mansa Road, Jurupa Valley, 92509
Open: 9:30 AM to 2:00 PM

Lake Elainore Permanent HHW Collection Facility
512 North Langstaff Street, Lake Elainore, 92530
Open the following Saturdays only: 9:30 AM to 2:00 PM
02/06/16, 03/05/16, 04/02/16, 05/07/16, 06/04/16, 07/09/16, 08/05/16, 09/19/16, 10/16/16, 11/05/16, 12/03/16

Palm Springs Permanent HHW Collection Facility
1100 Vista Road, Palm Springs, 92264
Open: October - May 9:00 AM to 2:00 PM
June - September 7:00 AM to Noon

Temporary HHW Facilities
(9:00 AM to 2:00 PM)

Anza
03/28/16 09/20/16
Anza Transfer Station
40329 Tenkiller Road, Anza, 92539

Beaumont - Hemet Area
02/21/16 05/14/16 09/17/16 12/17/16
Lamb Canyon Landfill
16411 Lamb Canyon Road, Beaumont, 92223

Bythe
02/27/16 12/10/16
County Administration Center
260 North Broadway Street, Bythe, 92225

Cathedral City
01/23/16 02/09/16 02/16/16 01/10/16 11/05/16
Edom Hill Transfer Station
91-200 Edom Hill Road, Cathedral City 92235

Coachella
04/23/16 11/19/16
Baguouna Park Swim Center parking lot
84625 Bagdad Avenue, Coachella, 92236

Corona
03/12/16 03/13/16
Desert Center Landfill
400 S. Victoria Avenue, Corona, 92882

Desert Center
02/04/16
Desert Center Landfill
17 991 Nelsor Road, Desert Center, 92239

Good Hope/Meadowbrook
09/27/16
Goodmeadow Community Ctr./Fire Station #9
2156 Steele Peak Drive, Perris, 92570

Idylwild
04/23/16 09/24/16
County Road Yard
25700 Johnson Road, Idylwild, 92549

Indio
05/20/16 05/21/16 12/09/16 12/10/16
Date Festival Fairgrounds
46-360 Arabas Street, Gate 6, Indio, 92201

La Quinta
02/21/16 11/9/16
South City Hall parking lot
79496 Calle Tempico, La Quinta, 92253

Mead Valley
01/03/16 10/28/16
Mead Valley Community Center
21091 Rider Street, Perris, 92570

Mecca
04/09/16 10/08/16
Sheriff's Substation
91-200 Avenue 66, Mecca, 92554

Moreno Valley
04/27/16 10/29/16
City Maintenance Facility
91-200 Avenue 66, Moreno Valley, 92551

Murrieta
03/19/16 10/22/16
Murrieta City Hall parking lot
1 Town Square
24501 Jefferson Avenue, Murrieta, 92562

Pinyon Communities
04/30/16 10/15/16
Pinyon Falls Transfer Station
So. Pinyon Falls Road, Pinyon Pine, 92561

Temecula
09/27/16
Temecula Valley Entrepreneur's Exchange
42000 Business Park Drive, Temecula, 92590

ABOP and PaintCare Facilities
Open NON-Holiday weekend Saturdays only
Non-contaminated Antifreeze, Batteries, Oil (and Filters), and Paint (PaintCare products). Additional items may be accepted at a facility specific basis. For information schedule or additional details see RCWaste.org or call (951) 486-3200.

Murrieta Area
County Road Yard
25315 Jefferson Avenue
Murrieta, 92562
Open: 9:30 AM to 2:00 PM

Beaumont - Hemet Area
Lamb Canyon Landfill
16411 Lamb Canyon Road
Beaumont, 92223
Open: 9:30 AM to 4:30 PM

Moreno Valley Area
Badlands Landfill
31125 Ironwood Avenue
Moreno Valley, 92555
Open: 9:00 AM to 4:30 PM

Sharps Kiosk Locations
For additional information <http://www.rcwaste.org/spencms/WasteGuide/sharps.html>

Riverside - Moreno Valley Metro Area
Riverside County Waste Management Department
14200 Frederik Street Moreno Valley, 92555
Available 24 hours daily

Beaumont - Hemet Area
Lamb Canyon Landfill
16411 Lamb Canyon Road, Beaumont, 92223
Open Monday through Saturday from 9:00am to 4:30 pm.
Check http://www.rcwaste.org/spencms/landfill_inland/landfill_hours.html for holiday schedule.

Recycle Used Oil and Filters
State Certified Collection Centers provide free recycling and offer recycling incentives. Find a Center near you: (800) CLEAN-UP or www.calrecycle.ca.gov/UsedOil/ReportsCentersSearch/
Changing oil too often? Find the manufacturer of change interval for your vehicle: <http://www.calrecycle.ca.gov/UsedOil/ChangeFndInterval/>

ABOP Collection Centers
Non-contaminated Antifreeze, Batteries, Oil (and Filters), and Paint (Liquor ONLY). Call for more information and hours of operation.

North - West Coachella Valley Area
Edom Hill Transfer Station
70-100 Edom Hill Road
Cathedral City, 92238
(760) 340 - 2113

East Coachella Valley Area
Coachella Valley Transfer Station
87414 Larcuff Road
Coachella, 92236
(760) 863 - 4034

Protect our workers. Sharps must be in sealed hard plastic containers. NO loose sharps!

Recycle Used Oil and Filters
State Certified Collection Centers provide free recycling and offer recycling incentives. Find a Center near you: (800) CLEAN-UP or www.calrecycle.ca.gov/UsedOil/ReportsCentersSearch/
Changing oil too often? Find the manufacturer of change interval for your vehicle: <http://www.calrecycle.ca.gov/UsedOil/ChangeFndInterval/>

HOUSEHOLD HAZARDOUS WASTE COLLECTION 2016

ACCEPTABLE MATERIALS
These items are examples of materials accepted for FREE at any Permanent or Temporary HHW Collection

Paint
• Paint
• Paint thinner
• Epoxyes
• Adhesives
• Paint stripper
• Wood stain

Used Oil & Filters
• Gasoline & Diesel
• Lighter fluid
• Brake fluid
(Flammable liquid containers cannot be returned)

Batteries
• Smoke detectors
• Cooking Oil

Fluorescent tube & bulbs
• Mercury detectors
• Light Ballasts

Televisions
• Monitors

Computers
• Electronic devices

Pesticides
• Poisons
• Mole balls
• Flea powder

Herbicides
• Fertilizers
• Garden chemicals
• BBQ Propane tanks

Cleaners
• Acetone cans
• Drain openers
• Disinfectants

Chemical chemicals
• Pool chemicals
• Laundry chemicals
• Degreasers

Needles
• Sharps
• Unused medication (except controlled substances)

Protect our workers. Sharps must be in sealed hard plastic containers. NO loose sharps!

Do the Right Thing...Reduce Hazardous Waste

Buy Smart
Purchase non-toxic or less hazardous products and only the amount you need. Look for alternative products that don't contain hazardous ingredients.

Store Properly
Toxic products are poisonous. Don't put your family's health and safety at risk! Keep products out of reach of children and pets.

Use It Up
Finish all unused products and recycle the empty containers or share with friends and neighbors.

Protect Our Communities
NEVER throw HHW into your household garbage, toilets or sinks; never dump on the ground or pour down the storm drain. It is illegal and HHW can seep into the groundwater, waterways, lakes, and oceans, causing contamination of our drinking water, beach closures and health hazards to swimmers.

Dispose Properly
Dispose of HHW properly at a FREE Riverside County HHW collection near you!

Transportation Checklist

- Label containers to identify contents or keep in original container
- Remove all valuables from trunk
- Transport waste in a box placed in the trunk of your car or in the bed of your truck. (Keep kids away from passengers)
- Secure leaky containers and loose loads
- Follow directions once you reach the HHW collection site.

Free Products - Material Reuse
Stop by our Materials Reuse Station to pick up FREE products for your next home or vehicle maintenance task. All products are inspected and made available to other customers for FREE. Most products are in good condition and sometimes even unopened! Availability of free products varies, but may include: paint, cleaners, pool, spa, lawn care and automotive products.

Visit us at Lake Elainore HHW Collection facility, we are open during normal collection hours. Future sites opening soon! Check website for update information. www.rcwaste.org

UNACCEPTABLE MATERIALS
These services are for residential use only. Photo documentation will be made of excessive or suspected non-residential loads. If you have any of these wastes please call (951) 486-3200 for assistance. The following waste **CANNOT** be accepted at ANY Riverside County HHW Collection Location:

- Ammunition and Explosives
- Appliances, Tires, or Tires
- Asbestos
- Business, Real Estate, Non-Profit, Organization, or Out-of-County Waste
- Compressed Gas Cylinders greater than 40 pounds
- Containers larger than five gallons or weighing more than 50 pounds
- Controlled substances/Infectious Wastes (except sharps)
- Radioactive or Remediation Materials (except smoke detectors)

Business waste disposal information:
Riverside County Environmental Health Department (888) 722-4234 or (951) 388-3030 or <http://www.rcwaste.org/businesswaste>

Riverside County Residents only.
Facilities are CLOSED during inclement weather or other hazardous conditions.

Free Paint Recycling
PaintCare is a California paint recycling program that accepts paint and paint products for recycling and reuse. Find participating locations and acceptable materials <http://www.PaintCare.org>

City Provided Services
Additional hazardous waste services may be provided by your city. Contact your city to verify program policies.

Only Rain Down the Storm Drain
Stormwater Pollution Prevention Program
Call 1-800-566-2555 to report illegal pouring of storm drains www.rcflood.org



Are You Concerned About the Condition of Highways, Roads and Local Streets?

Please join us at a public forum on transportation to discuss the state and regional roles in funding road repair and maintenance.

WHEN: Thursday, January 14, 2016 - 4 p.m. to 6 p.m.
Exhibits, media interviews and networking: 4 p.m. to 4:30 p.m.
Presentations and discussion: 4:30 p.m. to 6 p.m.

WHERE: Riverside County Administration Center
4080 Lemon Street, Supervisor's Chambers, Riverside, CA 92501

SPONSORED BY: California Transportation Commission, Southern California Association of Governments, Riverside County Transportation Commission and the San Bernardino Associated Governments

The California Transportation Commission, Southern California Association of Governments, Riverside County Transportation Commission and San Bernardino Associated Governments invite you to a public forum to learn more about the local, regional and state role in funding road projects and maintenance, the impacts and reasons for California's deteriorating transportation system, proposed short-term and long-term funding solutions, and the potential implementation of a road charge based on miles driven to stabilize road repair and maintenance funding.

Representatives from Inland Empire local business organizations, San Bernardino Associated Governments, Riverside County Transportation Commission, California Department of Transportation, Southern California Association of Governments and the California Transportation Commission will discuss and generate feedback on topics such as:

- How does the current condition of the Inland Empire's transportation system affect economic growth and regional competitiveness?
- What are the near-term and long-term transportation needs in the Inland Empire and in California?
- How can we stabilize and increase funding needed for repair and maintenance of highways, roads and local streets?
- How do we pay for ongoing operation and maintenance costs for our transportation network?
- What are some of the key transportation projects that are being planned in the Inland Empire?

Your voice is needed to help identify and implement policies to ensure that all Californians benefit from a well-maintained and efficiently-functioning transportation system. Please plan to attend.

VALENTINES SWEETHEART BALL & DINNER



WHEN
Sat. Feb. 13th 2016
6pm—10pm

WHERE
Mead Valley Community Center
Banquet Hall
21091 Rider St., Perris, CA 92570

ADULTS ONLY EVENT

ADVANCE TICKETS
\$20 General
Group rates available



SPONSORS



FEATURING • Dancing • Full Buffet Dinner • Entertainment • Door Prizes • Photo Booth • Raffles • Silent Auction Fundraiser

WWW.SMOOTHTRANSITION.ORG

THE FUN STARTS NOW

February 12 - 21, 2016



EZEQUIEL PEÑA
Saturday, February 13
at 7pm



TRACE ADKINS
Sunday, February 14
at 7:30pm

WWW.DATEFEST.ORG
800.811.FAIR



**MORRIS DAY
& THE TIME
SHEILA E**
Friday, February 19
at 7pm



**KC & THE
SUNSHINE BAND**
Saturday, February 20
at 7:30pm



SUPER FIESTA
Sunday, February 21 at 3pm

