

SUPERVISOR
KEVIN JEFFRIES
RIVERSIDE
COUNTY
DISTRICT #1



Inside this issue:

Commission for Women	2
County Boards & Commissions Appointee Profile	3
Supervisor Success Stories	4
Non Profit of the Month	5
District Profile	5
Upcoming District Events	6
91 Freeway Closure	7
Community Town Hall	8

Follow Us Online!

[www.facebook.com/
SupervisorJeffries](http://www.facebook.com/SupervisorJeffries)

Twitter: @SupJeffries



Jeffries Journal

Volume 4 Issue 2

February 2016

Kevin's Corner

A Different Kind Of Jury. Anyone one can apply – but if you have some spare time each week and you have the ability and desire to work with others, listen, evaluate and even offer constructive criticism – you may want to consider applying to serve on the Riverside County Grand Jury—an organization established to be the public's watchdog by investigating and reporting on issues within local government. Applications are being accepted by the Superior Court at:

<http://www.riverside.courts.ca.gov/grandjury/grandjury.shtml>

Homeless Camps. When our economy collapsed in 2007, we witnessed terrible consequences for many of our neighbors and friends. Many families broke up, others moved in with relatives, and many became homeless – living in cars or worse. The rebound of our economy has slowly lifted many back into “normal” lives. Reports are that today's homeless appear to have a larger group of “younger” males, many of which have a history of substance abuse, numerous arrests and many have some ongoing mental health issues. Law Enforcement officials make it clear that they cannot “arrest” their way to a homeless free community, as many of these individuals had previously been incarcerated until the State Legislature and California voters changed the laws in favor of releasing low level criminal offenders. Cities and counties up and down the state are now struggling with homeless camps that seem to simply migrate from one block to the next as they get pushed out by law enforcement, causing significant concern for local families and business owners. The past three years have made it clear to me that our county and cities are all going to have to work on regional, integrated solutions, that include not just housing, but mental health services, addiction treatment, and job training. The question of course is – where are we going to find the “housing” to shelter them, and then how do we pay for it?

Tired of Tires. Ever driven by an open field only to see a field of used tires? Have you noticed that when you buy a new set of tires that you also pay a tire recycling fee to the State? Unlike bottles and aluminum cans, you cannot simply grab some discarded tires from the roadside and redeem them for the fee that was paid when they were originally purchased. The piles just keep growing until a local government agency obtains a grant from the State to pick up or collect tires - and then try to find a place to properly dispose of them! Our office is pushing for the State Legislature to identify consumer-based solutions for our communities that utilizes the fees we already pay when we buy our tires, and fix the problem before it becomes a neighborhood eyesore.

As always – I welcome your input, suggestions and even the constructive criticisms.

Respectfully,

Kevin Jeffries

PS: Please be aware of the forthcoming complete closure of the 91 Fwy in Corona from the night of February 19th through the morning of February 22nd. See page 7 of this newsletter for details.

2015-2016 Woman of the Year & Young Lady of the Year Awards

Nomination Information and Form



Originally established in 1976 as an advisory board to the Riverside County Board of Supervisors, the County of Riverside Commission for Women seeks to improve the status of all women by ensuring opportunities for each woman to develop to her full potential. In support of this mission, the Commission for Women identifies problems, defines issues and recommends policies and procedures to the County Board of Supervisors regarding, but not limited to, women and health, the workplace, family, education, violence, law and society.

The County of Riverside Commission for Women is pleased to announce that it is accepting nominations for its **2015-2016 Woman of the Year (WOY) Awards**, to be bestowed upon an outstanding woman in each supervisorial district, who has demonstrated exceptional commitment to her community, by working to improve the status of women and their families in Riverside County.

The Commission is also accepting nominations for its **2015-2016 Young Lady of the Year (LOY) Award** presented to an outstanding young lady in each supervisorial district who has demonstrated exceptional commitment to her community, by working to improve their community or organization in Riverside County. The LOY must be between the ages of 12 and 18 years.

**Nominations are due no later than February 19, 2016
Please note the extended deadline date**

Requirements for WOY and LOY nominations are as follows:

1. Nominee may be nominated by an individual, a business, a non-profit organization, a government agency, a labor union, trade or professional organization, or an educational or religious institution.
2. The nominations may not come from an immediate family member or guardian but their support is encouraged for the nomination.
3. Nominee must live, work, or go to school in the Supervisorial District of Riverside County for which she is nominated.
4. Nomination statements may not exceed 1,000 words and the areas of focus are listed on the nomination form.
5. Current members of the County of Riverside Commission for Women are ineligible for nomination.

For more information on the County of Riverside Commission for Women please go to their website at www.rivcocfw.com today.

County Boards and Commissions Appointee Profile

Each month, the Jeffries Journal will highlight one of the Supervisor's nearly 100 appointees on Boards and Commissions in the county, to provide an insight into the kind of service opportunities that exist, and the people who have chosen to serve.

Riverside County Historical Commission *Ruth Atkins, Chairwoman*

Ruth Atkins is a mixture of fiery perseverance and dogged determination. The veteran volunteer and Historical maven has been a mainstay in Lake Elsinore's Historical circles for decades. She has occupied several offices with the City's Historical Society where she currently serves as the President and was the driving force to renovate the group's museum, located in the basement of the City's Cultural Center.

Ruth has a passion for the accurate preservation of local history and has become the "go-to" person for the media, the City, the County and even locals returning to better understand where they came from. In 2013 she was appointed to the County Historical Commission and this year she is serving as the Chair.

"I started out just trying to better understand this beautiful Valley I called home, and it has led me on a truly amazing journey."

The County Historical Commission meets monthly at rotating locations of historical interest and review applications for Historic landmarks and makes recommendations to the Board of Supervisors.

The next meeting will be held at the Coachella Valley History Museum on February 18th.



Recently Supervisor Kevin Jeffries stopped by the Riverside County Farm Bureau meeting to speak with members about policies and challenges our county will be faced with in 2016.

Thank you to our Farm Bureau members for all that you do for our county.

If you are interested in attending an upcoming meeting, go to their website www.riversidecfb.com for more information on dates, time and location.

Supervisor Success Stories



Each month this column will highlight recent successes in Supervisor Jeffries' Office, whether it is assistance for a single citizen dealing with the county bureaucracy, a change in county policy to improve our community, or a promise kept by the Supervisor.

Supervisors Approve Speed Feedback Signs.....

At the January 26th 2016 board meeting, the Board of Supervisors approved the installation of six (6) new "speed feedback" signs. The signs will be solar powered and will provide drivers approaching the sign a display of their current speed they are traveling, in addition to the posted speed limit for that zone of the road.

Our office would like to thank the staff at our County Transportation Department for recognizing the need and successfully competing for Federal funds as well as utilizing local Gas Tax funds to help with the purchase and installation of these much needed signs.



Homeowner Reaches Out For Clarification.....



Recently a resident reached out to our office for clarification on their business registration classification which required them to undergo a home inspection as well as pay a fee of \$444 for a home based internet business.

After reaching out to our TLMA Department, it was realized that the business owner had been misclassified and did not need to undergo any type of home inspection or pay any fees whatsoever as they were actually in the "exempt" category.

Property Owner Requests Assistance With Old Property Lien.....

Old Code Enforcement cases, even though closed can still affect your property in the form of a lien. A property owner recently realized this as he was in the process of selling his property and could not due to an old code case lien which was still showing on title, and henceforth holding up the sale.

After contacting our office, District #1 staff was able to determine that the case had since been closed and mistakenly not removed from the property records. The correction was made and the property owner was able to move forward with his transaction on the property.

Non Profit Spotlight

REACH OUT



REACH OUT
Strengthening Communities

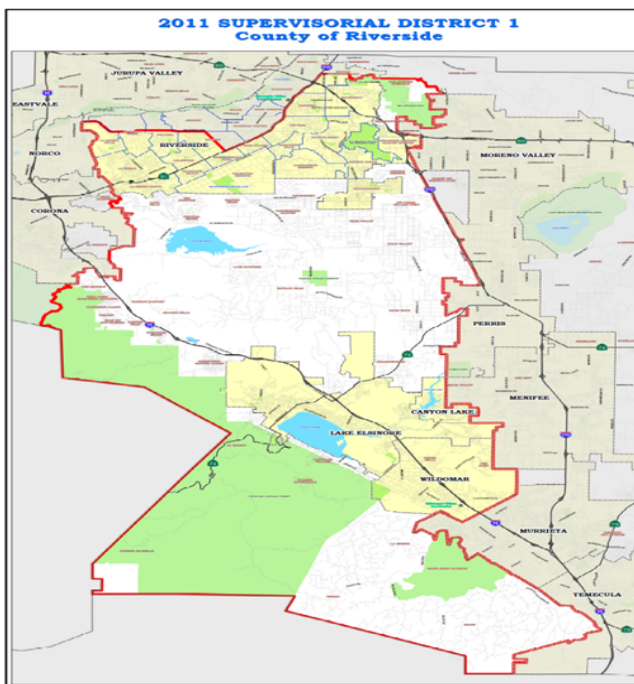
Reach Out is dedicated to embracing communities, youth, and families to strengthen the human bonds that enable all members of the community to grow and thrive. Since 1969 they have worked for all young people to have access to networks of support, quality education, career options, and opportunities to develop the skills to succeed in their lives.

They encourage positive change across the lifespan with programs assisting youth, their parents, and community members throughout the Inland Empire and Pomona Valley. Their dedicated and highly trained staff understands the value of compassion, commitment, and perseverance while also remembering the fun side of life and the smiles that make a difference.

They recognize that in order to make their vision a reality, they must reach out and partner with others who care about their communities. They serve as a catalyst, convener, and partner in collaborative solutions with local government, schools, universities, community organizations, neighborhoods, business, law enforcement, and community volunteers. These relationships help them stay in close touch with the reality of life in communities they serve, and they constantly adapt their programs and strategies to meet their changing needs.

Reach Out is sponsoring a one-day conference at California Baptist University on March 17, 2016, for students who are interested in careers in the health profession. For more information about Reach Out or the conference, please contact them at (909) 982-8641 or visit their website at

<http://we-reachout.org/>.



First District Profile



Kevin Jeffries was elected in November 2012 to represent the residents of the 1st Supervisorial District on the Riverside County Board of Supervisors. This district covers the cities of Riverside, Lake Elsinore, Canyon Lake, and Wildomar, and unincorporated communities including Woodcrest, Lake Mathews, Mead Valley, Temescal Valley, Good Hope, Lakeland Village, El Cariso, Meadowbrook, La Cresta, Tenaja, and DeLuz

VALENTINES SWEETHEART BALL & DINNER



WHEN
Sat. Feb. 13th 2016
6pm—10pm

WHERE
Mead Valley Community Center
Banquet Hall
 21091 Rider St., Perris, CA 92570

FEATURING • Dancing • Full Buffet Dinner • Entertainment • Door Prizes • Photo Booth • Raffles • Silent Auction Fundraiser

WWW.SMOOTHTRANSITION.ORG

ADULTS ONLY EVENT

ADVANCE TICKETS
 \$20 General
 Group rates available



SPONSORS



BENEFITING
 Smooth Transition Senior Congregate Meal Program

STATE SENATOR
RICHARD D. ROTH
 RIVERSIDE COUNTY ECONOMIC DEVELOPMENT AGENCY
 GREATER RIVERSIDE CHAMBERS OF COMMERCE

Invite you to register and participate in the
GO-BIZ SMALL BUSINESS SUMMIT
 GROW CALIFORNIA BUSINESS

Friday, February 19, 2016 ~ 8:00 AM to 11:00 AM
 Riverside County Board of Supervisors Chamber
 4080 Lemon Street, Riverside, CA 92501



Small Businesses, Entrepreneurs, Resource Partners and State Agencies

PROGRAM GOALS:

- Attraction, retention, and expansion services
 - Site selection
- Permit streamlining and clearing of regulatory hurdles
 - Small business assistance
- International trade development
- Assistance with state government

For more information contact Tyler Madary (951) 680-6750

PRINTING AND/OR REDISTRIBUTION OF THIS FLYER, OTHER THAN BY EMAIL, IS PROHIBITED.

THE FUN STARTS NOW

February 12 - 21, 2016

WWW.DATFEST.ORG
 800.811.FAIR

EZEQUIEL PENA
 Saturday, February 13 at 7pm

TRACE ADKINS
 Sunday, February 14 at 7:30pm

MORRIS DAY & THE TIME SHEILA E
 Friday, February 19 at 7pm

MC & THE SUNSHINE BAND
 Saturday, February 20 at 7:30pm

70th ANNUAL
 Riverside County Fair & National Date Festival
 FANTASY SPRINGS
 RIVERSIDE, CALIFORNIA

SUPER FIESTA
 Sunday, February 21 at 3pm

Art for the Animals

Art for the Animals is a fundraiser to benefit shelter animals in Riverside County.

Artists of all ages are invited to donate original artwork. Selected pieces are auctioned off at our live and silent auction event on Sunday March 13th at the Riverside Art Museum.

Event Dates:

Artwork submission
 Dec. 1st-Feb. 10th

Live and Silent Art Auction
 Riverside Art Museum (RAM)
 Sunday March 13th
 4pm-7pm
 3425 Mission Inn Ave.
 Riverside, CA 92501

Call for Artists!
 Dec. 1st-Feb 10th

To submit artwork and get more information, please visit our website at:

www.rcdas.org

SPECIAL ALERT: 91 Project in Corona to Require Weekend Full Closure of Eastbound and Westbound 91 between the 71 and I-15 Friday, February 19 at 9 pm to Monday, February 22, 2016 at 4 am

As part of the Riverside County Transportation Commission's (RCTC) 91 Project, there will be a 55-hour weekend full closure of the 91 in both directions between the 71 and I-15 in Corona from Friday, February 19 at 9 pm to Monday, February 22, 2016 at 4am.

This closure, branded "91 Steer Clear," is needed to perform three major construction activities:

1. Demolish the west side of the Maple Street Bridge over the 91
2. Install support beams for the new westbound Maple Street flyover ramp bridge
3. Pave the new eastbound 91 alignment near I-15

By fully closing the roadway, these significant construction efforts can be consolidated into one weekend, rather than multiple weekends or extending this over a month of weeknight closures. The full closure also will help ensure the safety of construction crews and the traveling public by eliminating cars and construction equipment on the road at the same time.

To minimize travel delays and impacts during the closure, RCTC strongly recommends that motorists plan ahead and completely avoid travel on and near the 91 in Corona or stay home. If travel cannot be avoided, motorists can use the 57, 60 and I-10 as alternate routes. Motorists traveling on the 91, 71 or I-15 near the project area during the closure period can expect delays of three to four hours. Please see detour map below.

A public meeting, focused on local impacts, will be held Saturday, Feb. 6 from 9 am to noon at the Corona Public Library, 650 S. Main Street, Corona to provide more information about the closure. Presentations will be held at 9:30 am, 10:30 am and 11:30 am; the presentation will be the same each time. A webcast option will be available for those who are unable to attend in person. To participate online, go to www.ustream.tv/channel/Rm9qrcU69JR. In addition, a link to a video recording of the meeting presentation will be provided after the meeting. In case of rainstorms or inclement weather, the Feb. 19-22 closure will be postponed to the next weekend, weather permitting.

Once the weekend construction activities are completed, more work is on the way for the Maple Street area during the coming months. Crews will rebuild the Maple Street bridge and construct the flyover ramp bridge across the 91. Nightly full closures of eastbound 91 likely will be required for about a week following the full weekend closure; additional periodic nighttime closures will occur in the future. Once the flyover ramp bridge at Maple Street is completed this summer, another full closure of the 91 may take place to remove the temporary support beams that will be placed the weekend of Feb. 19-22.

For questions, please call the helpline or visit the website noted below. We thank you for your patience and understanding.

NOTE: Information contained in this Notice is subject to change based on weather, field conditions or other operational factors.



**PLEASE JOIN SUPERVISOR KEVIN JEFFRIES
AND COUNCILMAN CHRIS MAC ARTHUR FOR A**

Community Town Hall

**FEBRUARY 29, 2016 5-6:30 PM
HUNT PARK COMMUNITY CENTER
4015 JACKSON ST, RIVERSIDE, CA 92503**

HEAR UPDATES FROM:



- **BOARD OF SUPERVISORS, FIRST DISTRICT**

INVITED COUNTY DEPTS:

- **REGISTRAR OF VOTERS**
- **VETERANS SERVICES**
- **OFFICE OF AGING**
- **RIVERSIDE COUNTY
TRANSPORTATION COMMISSION**
- **WORKFORCE DEVELOPMENT AGENCY**



City of Arts & Innovation

- **RIVERSIDE CITY COUNCILMAN, WARD 5**

INVITED CITY DEPTS:

- **ASSISTANT CITY MANAGER**
- **COMMUNITY DEVELOPMENT DIRECTOR**
- **ANIMAL SERVICES**
- **CITY CODE ENFORCEMENT**
- **PARKS, RECREATION & COMMUNITY
SERVICES DEPARTMENT**
- **RIVERSIDE POLICE DEPARTMENT**
- **RIVERSIDE PUBLIC UTILITIES**
- **PUBLIC WORKS**

Questions:

County: 951-955-1010 or District1@rcbos.org
City: 951-826-5991 or cconder@riversideca.gov