

**SUPERVISOR
KEVIN JEFFRIES
RIVERSIDE
COUNTY
DISTRICT #1**



Inside this issue:

Kevin's Corner	1
Tax Chart	2
WMD Payment Assistance	2
Supervisor Success Stories	3
Commissions & Boards	4
Non-Profit of the Month	5
District Profile	5
Upcoming District Events	6
2015 District #1 Holiday Events	7

Follow Us Online!

www.facebook.com/
SupervisorJeffries

Twitter: @SupJeffries

Instagram :
supervisor_jeffries



Jeffries Journal

Volume 3, Issue 11

November 2015

Kevin's Corner

TAXES. About this time every year, our office telephones start lighting up with home and property owners who have just opened their new property tax bills. The recovering economy and increased land values result in sticker shock for many who had their taxes reduced during the recent Great Recession, as those who have been lowered previously can increase back to the original base rate much more quickly than the Prop 13 rate for properties generally. But while we are always happy to try to help constituents resolve problems with county agencies, before you pick up the phone to share your property tax concerns with my office or that of another Supervisor, here are some important pointers:

- The Board of Supervisors does not approve or determine your assessed value.
- The County of Riverside only receives/retains 18 cents of every dollar you pay. (See Chart on pg2)
- The elected County Assessor Peter Aldana has a very dedicated and professional staff that will try to answer all of your questions. They can be reached at 951-955-6200 or 955-1100.
- You have the right to appeal your assessment. If you believe a mistake has been made, the County has a formal appeal process to challenge your assessed valuation. You have to pay a small filing fee and you should plan on doing your homework on comparable values in your neighborhood. Information on that process is here: <http://www.rivcocob.org/assessment-appeals-office/>

UNCLAIMED MONEY. Believe it or not, people and businesses are literally “giving” state and county governments millions in unclaimed funds. When the county and/or state attempts to refund or return overpaid bills, fees, or taxes to taxpayers and customers, and the mailing address on file is incorrect or the recipient does not respond, the county and/or state sets those funds aside in an Unclaimed Funds Account for a limited duration. Each year I'm amazed and disappointed with the amount of money that is surrendered and ultimately transferred into the County general fund because the business or taxpayer does not follow up on the notifications sent to them from the county (I can't speak as to how the State attempts to notify individuals). Just this past month, \$879,428.27 was transferred to the county general fund, with nearly \$10,000.00 unclaimed from a private University in the Riverside area. So take a few minutes and take a look and both the State and County websites that list Unclaimed Funds.

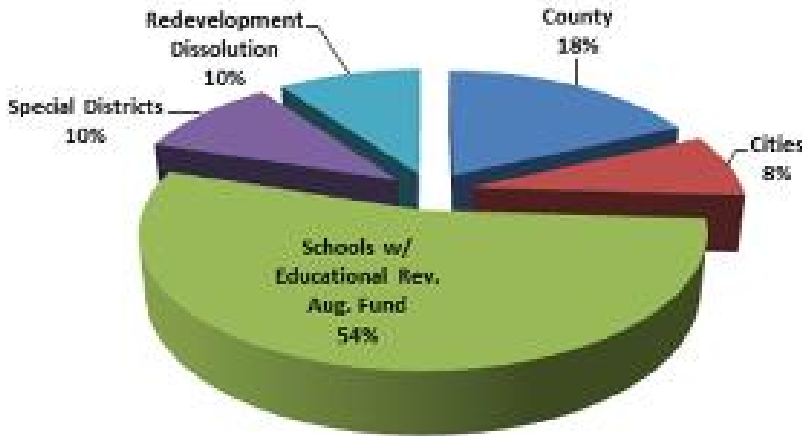
The State Controller's unclaimed property page is here: http://www.sco.ca.gov/upd_msg.html

Riverside County page is here: <https://www.countytreasurer.org/TaxCollector/UnclaimedMoney.aspx>

Respectfully,
Kevin Jeffries

PS: It was great to see all the families out at our Halloween events in Temescal Valley, Mead Valley, and Good Hope. Thank you to Riverside County Parks for all the hard work in bringing these events to our communities!

FY 2014-15 Estimated
1% Property Tax Distribution



WHERE DO MY TAXES GO??

Happy Thanksgiving from Supervisor Kevin Jeffries and all of the District #1 Staff.



Western offers bill payment assistance



Securing Your Water Supply

Need a little help?

Western is pleased to offer bill payment assistance to qualified low-income residential water and sewer customers. To qualify, you must be a current participant of the CARE program offered by your gas or electric company and:

- Have a past due account
- Have access to a copy of your most recent natural gas or electric bill verifying your CARE discount
- Have a gas or electric bill that matches the name on your Western account. If the names don't match, the name on the gas or electric bill must be added to the water account.
- Have a balance due of \$150 due or less; maximum assistance would be \$150 during a 12-month period.

This assistance cannot be used toward payment of a deposit and is subject to funding availability from Western. For more information email billing@wmwd.com or call 951.571.7104

Supervisor Success Stories



Each month this column will highlight recent successes in Supervisor Jeffries' Office, whether it is assistance for a single citizen dealing with the County bureaucracy, a change in county policy to improve our community, or a promise kept by the Supervisor.

Community Advocates Ensure Senior Center runs like clockwork!

Local community seniors **Gloria Hernandez** and **Yolanda Williams** (pictured to the right) are daily fixtures at the Mead Valley Senior Center. From making sure coffee is fresh and lunch lines are organized, to pointing out potential safety hazards, Gloria and Yolanda are always on top of the issues affecting our seniors at the center. Both are instrumental in advocating needs and ideas to Supervisor Jeffries at our quarterly senior advisory meetings with him.



Thanks to the work of these great ladies, our Mead Valley Senior Center runs like clock work! If you have not had time to stop by and visit please do. There are daily activities, field trips, and holiday celebrations. Thanks to these wonderful ladies for their many volunteer hours dedicated to our community.

The Charles G. Meigs community center is located at 21091 Rider St. Perris, CA 92570

Correction of County Records Allows Homeowner to Refinance!

Recently a resident of District #1 contacted our office to assist him with an error on county records regarding the square footage of his home, which would not allow him to refinance. After providing the details of the miscalculation, our staff was able to work with the Assessor's Office, who promptly had an appraiser confirm the additional square footage missing and was able to revise the records to reflect the correct appraisal.



Completed within one week's time frame, and provided a certificate of square footage by the County of Riverside, the homeowner was grateful as he could now close his refinance process.



County Boards and Commissions Appointee Profile

Warm Springs Community Advisory Council (CAC)

Tim Hodges, Chair

What does the Warm Springs Community Advisory Council do?

We are the go-between to our constituents and the supervisor. We are our supervisor's ears and eyes for our local communities.

What interested you in serving on the Warm Springs CAC?

I like having a direct relationship with our supervisor. It allows me to have direct input with all of our county agencies and the people.



Be sure to join us on
November 4th at 6pm
Temescal Canyon High School
in the library
28755 El Toro Rd,
Lake Elsinore CA
Speaker: Supervisor
Kevin Jeffries



Veterans Advisory Commission

THERE IS NOW AN OPENING on the Veterans Advisory Committee to fill an unexpired term until 6/30/16. Committee meets the first Tuesday of each month, excluding July and August. Applicant must be a current member of a congressionally chartered veteran's organization. For more information, please contact our office.

Non-Profit of the Month

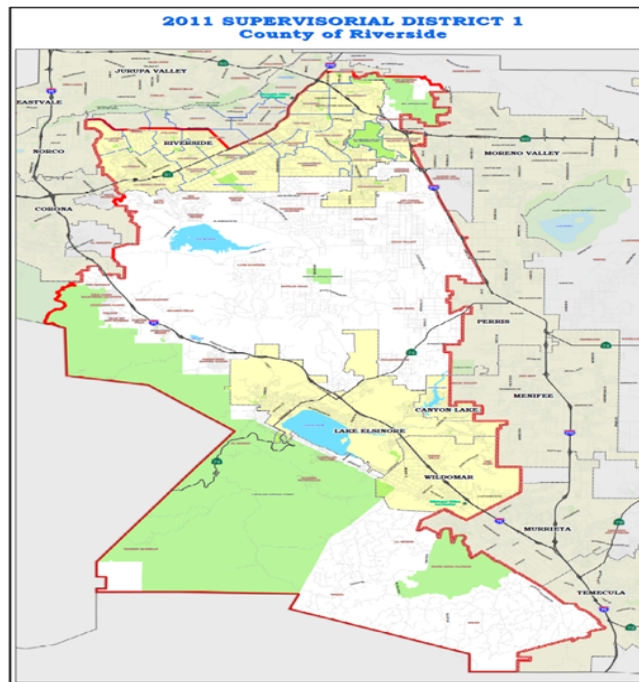
Community Outreach Ministry



Community Outreach Ministry is meeting a big need in children of prisoners and other at risk youth in our community through Outreach, Camping, Mentoring, and Christmas Events. These smallest victims of crime are being given an opportunity to receive purpose, destiny and abundance. It is exciting to see their young lives being changed, families being preserved, and our community being enriched through outreach.

Community Outreach Ministry is preventing youth from entering into the juvenile/criminal justice system by breaking the cycle of crime, poverty, illiteracy, violence, delinquency, school dropout and destructive behavior. Children's lives are being renewed and empowered through year round mentoring to make wise choices by enhancing their academic skills, personal youth development and preparing them for college and careers. Scholarships provide a make or break opportunity for youngsters to escape the road of criminal behavior, self-destruction and incarceration. We offer free emergency services, resources, and referrals to victims of homelessness and those in poor living conditions.

For more information or to become involved, contact: Bob & Mona Davies • 23905 Clinton Keith, Suite 114-116 • Wildomar CA 92595 • 951.698.7650 • Email: info@communityoutreachministry.org



First District Profile



Kevin Jeffries was elected in November 2012 to represent the residents of the 1st Supervisorial District on the Riverside County Board of Supervisors. This district covers the cities of Riverside, Lake Elsinore, Canyon Lake, and Wildomar, and unincorporated communities including Woodcrest, Lake Mathews, Mead Valley, Temescal Valley, Good Hope, Lakeland Village, El Cariso, Meadowbrook, La Cresta, Tenaja, Spring Hills, Warm Springs and DeLuz

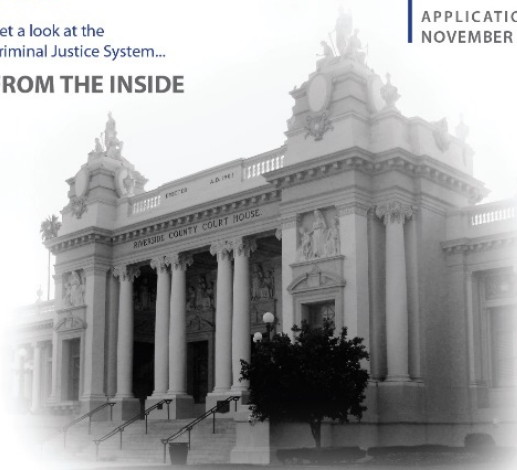


Riverside County District Attorney's Office 2016 CITIZENS' ACADEMY

January 21 - March 10
THURSDAYS 6-8:30 PM
APPLICATIONS DUE
NOVEMBER 12, 2015

Get a look at the
Criminal Justice System...

FROM THE INSIDE



JOIN US

for an eight-week course that provides an inside look at the function of the District Attorney's Office in Riverside County. Participants will receive a comprehensive tutorial regarding the judicial process with seminars led by Riverside's top prosecutors, investigators, police and other public safety officials.

FOR MORE INFORMATION CONTACT:
Amy McKenzie, DA Information Specialist
951-955-5400, outreach@rivcoda.org

website: www.rivcoda.org

facebook: www.facebook.com/RivCoDA

twitter: @rivcoda



Saturday, November 21, 2015 National Family Volunteer Day Volunteers Needed for Clean Up Event in Lakeland Village

Join RivCo Parks & First District County Supervisor Kevin Jeffries for National Family Volunteer Day at the future site of the Lakeland Village Community Center!

Volunteers of all ages are needed to help beautify the old Butterfield Elementary campus in Lakeland Village. We will be working indoors and out, cleaning playgrounds, classrooms, pulling weeds, and restoring other parts of the campus. We need all the helping hands we can get!

Date: Saturday, November 21, 2015

Time: 10:00am—2:00pm

Location: 16275 Grand Ave, Lake Elsinore, CA 92530

How to Register: email or call Shannon Chamberlain at snchamberlain@rivcoparks.org or (951)955-1396.



RIVERSIDE COUNTY SHERIFF'S DEPARTMENT



JOB FAIR!
SATURDAY, NOVEMBER 14, 2015

8:00AM to 1:00PM

BEN CLARK PUBLIC SAFETY TRAINING CENTER

16791 Davis Ave., Riverside, CA 92518



Written Exams and Physical Agility Tests (PAT) for Deputy Sheriff and Correctional Deputy will be administered. Exams for 9-1-1 Communications Officer will also be administered.

Due to limited seating for presentations and testing, applicants are encouraged to schedule an appointment ahead of time.

Walk-ins are welcome based on availability.

Presentations regarding other available positions and the application process will occur every hour from 8:00AM to 12:00PM.

To schedule an appointment or if you have any questions, please contact Human Resources at 1-888-Join-RSD or email at HRSheriffRecruiter@rc-hr.com



JoinRSD.org

REGIONALLY GROWN AND REFINISHED
QUALITY
COUNTRY
COPPER SPACE DISTRICT

ADMISSION:
\$4 PER ADULT
\$3 PER CHILD
(CASH ONLY)

LOUIS ROBIDOUX NATURE CENTER'S
PECAN Festival

10 AM - 3:30 PM
SATURDAY, NOVEMBER 14, 2015

FOLKLORIC DANCERS • LIVE COUNTRY MUSIC • LINE DANCING • EXHIBITS
HAY RIDES GAMES • KID CRAFTS • FACE PAINTING • ANIMALS
HOT FOOD VENDORS • WALKS THROUGH THE PECAN GROVE • AND MORE

* We will supply a bag to gather pecans!

LOUIS ROBIDOUX NATURE CENTER
5370 Riverview Drive, Jurupa Valley, CA 92509 - (951) 683-4880

Bring your lawn chair or blanket, visit with us for the afternoon!
Visit us online at www.RivCoParks.org

*We cannot guarantee quality of the nut & quality

District 1 Holiday Events

- Wed, December 2nd 4 - 6pm
District 1 Reception
 Santa Rosa Plateau (39400 Clinton Keith Rd, La Cresta)
- Thurs, December 3rd 6 - 8pm
Cookies with Santa
 Lakeland Village School (18730 Grand Ave, Lakeland Village)
- Sat, December 5th 10am - 2pm
Winter Festival
 Deleo Sports Park (25655 Santiago Canyon Road, Temescal Valley)
- Thurs, December 10th 3-5pm
Cookies with Santa
 Woodcrest Library (16625 Krameria, Woodcrest)
- Sat, December 12th 8am - Noon
Breakfast with Santa
 Charles G. Meigs Community Center (21091 Rider Street, Mead Valley)
- Mon, December 14th 4 - 6pm
County Board of Supervisors' Holiday Reception
 County Building, 5th Floor (4080 Lemon, Riverside)
- Sat, December 19th 8am - Noon
Breakfast with Santa
 Good Hope Community Center (21565 Steel Peak Drive, Good Hope)

We are joining with Riverside County Fire Department in supporting the Spark of Love Toy Drive at our receptions. It is not a requirement for admission, but if you are able, please bring a new unwrapped toy or sports equipment for underprivileged children in our region. If you are unable to attend the reception, donations are accepted at all CDF/Riverside County Fire stations throughout the county.

