

SUPERVISOR  
KEVIN JEFFRIES  
RIVERSIDE  
COUNTY  
DISTRICT #1

# Jeffries Journal

Volume 1, Issue 2

March 2013



## Kevin's Corner



### Inside this issue:

Supervisor Success Stories 2

County Boards and Commissions Appointee Profile 3

Non Profit Spotlight 4

District Profile 4

Each month this portion of the First District newsletter will allow me the opportunity to directly pass along to you my personal observations and/or concerns about the opportunities and challenges facing the First District and Riverside County. Sometimes I might put you to sleep, but overall I hope you will find our newsletter to be informative.

Having been on the job as your new County Supervisor for less than 90 days does not yet afford me the opportunity to share with you much insight – but rest assured our entire office is meeting, listening and communicating with a lot of residents, taxpayers and small business owners. Many are frustrated with the slow and sometimes inexcusable pace of government and are looking to us to light a fire under somebody's chair and get decisions made, or in some cases it's simply a neighbor calling to have a county road repaired or get code enforcement

to investigate illegal dumping, or request animal control deal with dangerous dogs.

On the other hand, the big county-wide challenges are the ongoing county budget shortfalls, increased demands on public safety services, traffic congestion, continued high unemployment, and the lack of job opportunities in Riverside County (just to name a few). Another significant challenge for your county government is the change that is coming next year with national healthcare reform. Our County Hospital and its healthcare network is already running in red ink and could get worse if the reforms and mandates are not implemented with some common sense by our federal and state officials. Our experience with the state prison realignment mandate (holding new long term inmates in county jails instead of sending them to state prisons) has proven to be a

public safety and budget nightmare for our county government. Nearly 7000 individuals were given "early release" from our county jails and put back in our neighborhoods last year. This will likely continue for several more years – at least until new jail capacity is constructed (and try to find a community that wants a new jail located in its backyard).

In closing, my staff and I are dedicated to building strong ties in each community. We are working closely with the four cities (Wildomar, Lake Elsinore, Canyon Lake & Riverside) to build cooperative relationships and make effective use of your hard earned tax dollars. We are working daily with the residents, community leaders and organizations in the unincorporated areas (La Cresta, Lakeland Village, Temescal Valley, Good Hope, Mead Valley, Lake Mathews & Woodcrest – to name a few) to address short and long term community needs. We have big challenges ahead for Riverside County and we sincerely appreciate the input and support that many of you are offering to help improve our county and our neighborhoods.

Respectfully,  
Kevin Jeffries

## Supervisor Success Stories



*Each month this column will highlight recent successes in Supervisor Jeffries' Office, whether it is assistance for a single citizen dealing with the county bureaucracy, a change in county policy to improve our community, or a promise kept by the Supervisor.*

### **Unfair Assessment Resolved!**

A frustrated home owner in Riverside recently approached the Supervisor's Office with a request to assist him in getting his property properly re-assessed. According to the homeowner, he had been assessed unfairly for the past four years

on his home, because he was being assessed for a home addition which had never been completed, costing him thousands of dollars extra every year. The homeowner had tried on several occasions to explain his situation and have his property reassessed correctly, but to no avail.

At the request of Supervisor Jeffries' office, the County Assessors' Office ordered a new field inspection of the home. The error was then documented, resulting in the County of Riverside correctly reassessing the home in question, resulting in a savings of \$15,000.00 for the past four years to the homeowner.

### **Sidewalk Successes**

The Riverside County Transportation Commission (RCTC) staff reported in January that it had ended the year with a surplus in its sidewalk construction account. Rather than allow those funds to go back into a general pool and require local jurisdictions to compete for them all over again Supervisor Kevin Jeffries joined Lake Elsinore Mayor Bob Magee in requesting that the next qualified project(s) automatically receive the funding this year rather than next. This led to \$136,000 being approved for curbs, gutters, and sidewalks on King Avenue between Krameria Ave. and Van Buren Blvd. in the Woodcrest area. These improvements are just one block from the Woodcrest library and Woodcrest Elementary School, near the Woodcrest Plaza Shopping Center, helping to improve public safety and the general appearance of the area.

Lake Elsinore was also allocated \$44,000 to do the same thing on Mill Street—allowing Railroad Canyon Elementary School children a safe path to school.

### **Partnering with Wildomar**

The County of Riverside has long owned a large transportation yard on Bundy Canyon in the City of Wildomar. The City had approached the county about potentially storing some public works equipment at the county yard, and also had inquired about the possibility of occasionally using this space for community events. Unfortunately, the City had not been able to reach an agreement with the County last year.

After Supervisor Jeffries was elected, he was contacted by representatives of the City, and seeing the opportunity for cooperation, called a meeting of the county and city representatives to discuss the matter with his chief of staff on the transportation yard site. After discussing issues of liability and traffic flow, the county has agreed to partner with the city and an agreement has now been approved by the Board of Supervisors.

The first community event at this site is going to be the Wildomar Rotary "Ultimate BBQ Showdown" on April 6th, from 10am to 4pm. You can find more information on the event here: <http://lakeelsinore-wildomar.patch.com/events/the-ultimate-bbq-showdown-east-vs-west>

## County Boards and Commissions Appointee Profile

*Each month, the Jeffries Journal will highlight one of the Supervisor's nearly 100 appointees on Boards and Commissions in the county, to provide an insight into the kind of service opportunities that exist, and the people who have chosen to serve.*

### Joyce Hohenadl Riverside County Historical Commission

Joyce was first appointed to the Historical Commission in 2006, and is a resident of Lake Elsinore. Under the jurisdiction of the Parks and Open Space District, they meet every other month at locations throughout the county.

For more information about the commission, you can visit their website here: <http://www.rivcoparks.org/about-us/historic-commission/historical-commission/>



#### What does your commission do?

The intent of the Riverside County Historical Commission is to preserve the numerous historic building, sites, places and landscapes in our county for future generations. This county is rich in history and has a very colorful past.

This commission meets to review all Riverside County Historic Landmarks applications. Once the commission approves an application, it is then forwarded to the Riverside County Board of Supervisors for their approval in the designation of a historical landmark. The commission assists in helping with any areas of historic preservation that individuals or groups may need to achieve their specific goals.

#### What interested you in the commission?

I have always been interested in anything historical, including houses, churches, roads, bridges, trees, people, etc. The very first time I went into my grandparents' farm house cellar in Missouri, at a very young age, I discovered a treasure of antiques. From that moment on I was fascinated with anything historical.

It was gratifying to discover that Riverside County had a Historical Commission that protected and placed landmarks on the county's historical places that reflects its past history. I knew I wanted to part of this important and rewarding commission.

*Supervisor Jeffries Congratulates  
Elsinore High School Academic  
Decathlon Team for their second  
place finish in the county-wide  
competition at the March 12th  
Board meeting.*



## Non Profit Spotlight

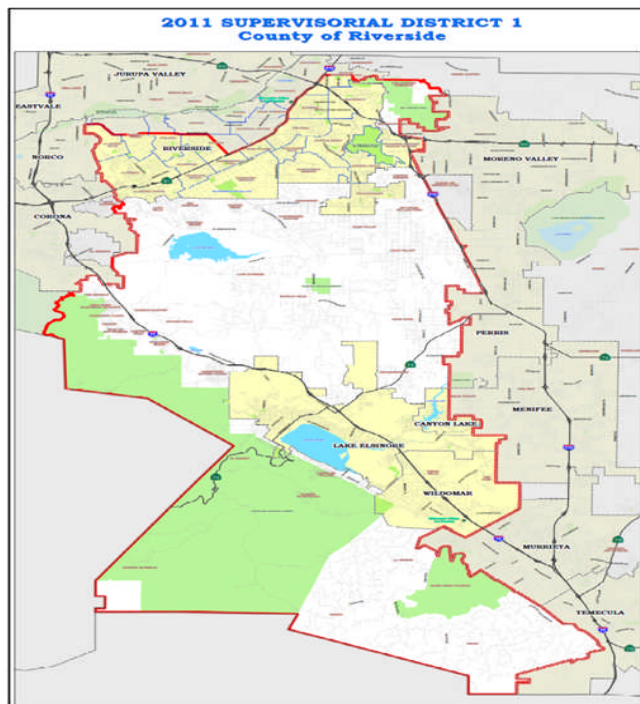
**Path of Life Ministries** is a dynamic group of community-minded individuals serving the community since 1998. They have become a premier non-profit service agency committed to serving the greater Riverside homeless, challenged youth, and family population with the goal to *Rescue, Restore and Rebuild* lives in our community. One of their core guiding principles is grounded in partnering with the community. They accomplish this by extending our services with local collaborative partners, other providers, and support agencies. This contributes to a holistic, community based solution that improves the social, economic, and spiritual health and vitality of the poor, homeless, at risk youth, and families.



Path of Life Ministries addresses significant barriers of dysfunction with people in crisis including children and families. Families are met first at their place of largest need with food, shelter and stabilization services; the *Rescue* point. Next, the process of *Restoring* and *Rebuilding* begins through compassionate case management, housing, health care services, community resources, and wrap-around services that are provided to promote self-sufficiency and family restoration.

Path of Life Ministries served over 1,600 individuals and families in crisis in 2012, generating 104,743 bed nights. In addition, their health care partner Health to Hope Clinics, saw 2,156 patients and 1,545 prescriptions were filled at no cost to their patients.

To find out how to help a person in need or to make a financial contribution, visit their website at [www.thepathoflife.com](http://www.thepathoflife.com).



### First District Profile



*Kevin Jeffries was elected in November 2012 to represent the residents of the 1st Supervisorial District on the Riverside County Board of Supervisors. This district covers the cities of Riverside, Lake Elsinore, Canyon Lake, and Wildomar, and unincorporated communities including Woodcrest, Lake Mathews, Mead Valley, Temescal Valley, Good Hope, Lakeland Village, El Cariso, Meadowbrook, La Cresta, and DeLuz*