



**Inside this issue:**

Kevin's Corner Continued	2
District #1 Board & Commission Openings	2
Commissioner Spotlight	3
Non-Profit Spotlight District #1 Profile	4
Local District #1 Information	5 6 7 8
2020 Voter Information	9 10



**Follow Us Online!**

**[www.facebook.com/  
SupervisorJeffries](https://www.facebook.com/SupervisorJeffries)**

**Twitter: @SupJeffries**



# Jeffries Journal

Volume 8, Issue 10

October 2020

## Kevin's Corner

**Chapter Closes** – You may have read that our County Chief Executive Officer, Mr. George Johnson, has announced his retirement. George has been working in government services for roughly 30 years. If you have ever worked with George, you know he is one of the nicest, most polite individuals you could ever meet. And being the County CEO has significant challenges: Managing over 20,000 employees, a half dozen or more labor groups, roughly \$6 billion budget, complying with State mandated programs & spending, working with nearly 30 cities, and of course 5 elected County Supervisors, 1 elected Sheriff, 1 elected District Attorney, 1 elected Auditor-Controller and 1 elected Treasurer Tax Collector. What could go wrong? George will be missed by all. His departure of course opens another chapter for the next County CEO. The Board will soon be selecting a firm to conduct a local and nationwide search for a permanent replacement.

**COVID** – With COVID hospitalizations having fallen to April levels, and Riverside County having moved into the improved Red Tier level, many local businesses have reopened and/or moved back indoors, albeit with limited indoor seating in most cases. Many local residents have called upon the Board of Supervisors to “lift” the remaining restrictions on businesses, churches and others. The Board will hold a follow up discussion on this matter on Tuesday October 6<sup>th</sup> (sometime after 9:30am). For those advocating to lift the restrictions, the single biggest hurdle for such an effort is that the County of Riverside has NO county issued restrictions to lift on businesses, churches, schools, etc. All the restrictions are imposed by the State of California. Local counties and cities cannot legally lift restrictions issued by higher level government agency (only the courts can do that), and the school districts will determine when they will open their own schools once the Governor allows them to do so—not the county. If the County did tell business owners that they could fully open and to disregard state orders, local cities (where 70% of businesses are located) and the State could still enforce their own regulations. Additionally, for any professionals or businesses who are licensed by the State or have an ABC license, the personal or business licenses could be revoked or suspended by the State. Cal/OSHA is another potential legal hazard for employers defying state orders. Numerous lawsuits have been filed across the State to challenge the restrictions, but to date, no rules have been overturned in California. I believe a brief review of the lawsuits and their merits will occur at our meeting on Tuesday. It is important to note that there is no proposal before the Board to lift mask, social distancing or sanitizing requirements. The entire COVID response issue has our residents pretty well divided.

**VOTING** – Voting this year has been made a lot easier, but will it be better? Will it take longer to get results? Below I have listed some of the changes that you should expect this election season. Unfortunately, the State changes will not stop you from likely receiving campaign robo-calls the minute you sit down for dinner (only voting early can help get you off the call list of some big campaigns)!

continued on page 2

The November 3, 2020 General Election model will be different this year, offering more ways to vote, and I have heard from many who have had concerns or questions. Here is information on the election model.

- All registered voters will receive a ballot by mail beginning Monday, October 5, 2020, whether you have requested it or not, as ordered by state law.
- Voters can verify their voter registration at [www.voterstatus.sos.ca.gov](http://www.voterstatus.sos.ca.gov) or register to vote at [www.registertovote.ca.gov](http://www.registertovote.ca.gov).
- Your Vote-By-Mail ballot may be returned at any of the 80 secure “Ballot Drop-Off” locations that will be available beginning October 5, 2020 or via the postal service (no postage required).
- We will also be operating nearly 130 “Voter Assistance Centers” throughout Riverside County. You can vote in-person at any location from October 31 - November 3, 2020.
- A list of the Ballot Drop-Off locations and Voter Assistance Centers and other Riverside County election information will be posted at [www.voteinfo.net](http://www.voteinfo.net). (1st district locations are listed on pages 9 & 10)
- You may track your ballot and when it has been received and when it has been counted by registering at <https://california.ballottrax.net/voter/>.
- Contact the Riverside County Registrar of Voters at (951) 486-7200 with any questions or concerns.

**An important recommendation** that I would like to make is that **IF** your preference is to vote in person, please try to **bring your (Vote-by-Mail) ballot** to surrender to the poll workers and they will give you a new ballot. If you do not bring your Vote-by-Mail ballot with you, you may still vote, however, you may be given the option of a Provisional Ballot, and that will take longer (weeks) to be counted, as the Registrar’s office will need time to verify that the Vote-by-Mail ballot originally sent to you was not submitted.

Respectfully,

Kevin Jeffries

---

*Interested in serving your local community?*

*Perhaps you are more of a regional advocate?*

*If you live in or have a business in District #1, be sure to look at the list of openings we have below for local commissions.*

*If you feel you have the time to dedicate to making the district a better place feel free to apply online at [www.supervisorjeffries.com](http://www.supervisorjeffries.com), under Boards & Commissions*

**In Home Support Services (IHSS) - Recipient of IHSS Services—One (1) opening**

**Behavioral Health Commission - Contact our office for details on eligibility**

**Woodcrest Municipal Advisory Council (MAC) - Two (2) board alternate openings**

**First 5 Commission - One (1) opening**

**Advisory Council on Aging - One (1) opening**



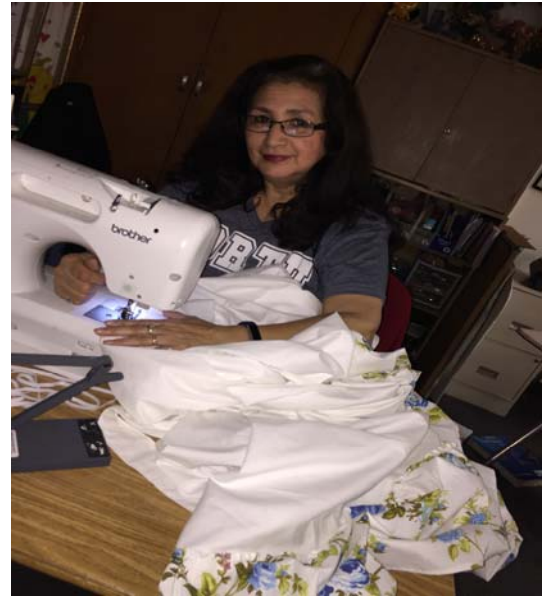
# *Commissioner's Spotlight.....*

## **Good Hope / Meadowbrook Municipal Advisory Council**

### **Board Member—Victoria Bella**

#### **What does your board do??**

Our Board is a voice for the community with the Supervisors' office. We hear concerns, address issues and communicate information to our residents. My community is important to me. Keeping the surrounding areas nice to live in has been important to my neighbors as well. Some time ago, in my area, the dirt road going up to my house was not a pretty sight. We had many abandoned cars and trash. At that time, we didn't know where to go if we needed something done. Coming to the meetings helped us to solve the problems.



#### **Why did you join the board?**

I joined to help make a difference. If it wasn't for the problems we had in my area, we would have never heard about the MAC board. Since then, my mom and neighbors have been attending the bi-monthly meetings. I believe we can use the resources provided by the County Supervisor to make a difference in this community.



## Non-Profit Spotlight

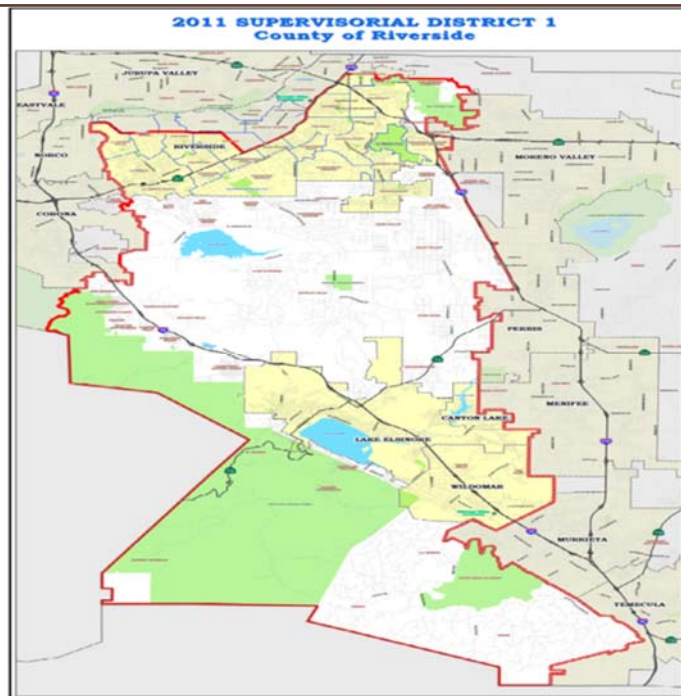
### Michelle's Place Resource Center

Michelle's Place Cancer Resource Center was created as a dying wish of Michelle Watson. Michelle was a 26-year-old victim of breast cancer. As a Temecula resident, Michelle was frustrated with the lack of local resources available to her while facing the challenges of cancer treatment.

Sadly, Michelle succumbed to her disease on July 23, 2000. In the wake of Michelle's passing came a mission of service to make it easier for others touched by this unrelenting disease. Family, friends, and the community have come together and created a mission to serve the local community. Her parents wish her treatment would have started sooner, but bitter disappointment was replaced with positive action. Since Michelle needed a resource center where she could go for help in coping with her challenges, her parents, family and friends started one in her memory so others will have an opportunity to get the help they need.

Today, Michelle's Place provides over 10,000 free services a year to individuals and families impacted by all types of cancers. In order to continue to provide these free programs and services to clients, they rely on the ongoing support of our donors, grantors and fundraising efforts. As a nonprofit organization, every dollar counts! Donations allow Michelle's Place to continue to provide the necessary support to individuals and their families impacted by cancer throughout our community.

For more information visit [www.michellesplace.org](http://www.michellesplace.org) or call 951-699-5455.



### First District Profile



*Kevin Jeffries was elected in November 2012 to represent the residents of the 1st Supervisorial District on the Riverside County Board of Supervisors. This district covers the cities of Riverside, Lake Elsinore, Canyon Lake, and Wildomar, and unincorporated communities including Woodcrest, Lake Mathews, Mead Valley, Temescal Valley, Good Hope, Lakeland Village, El Cariso, Meadowbrook, La Cresta, Tenaja, DeLuz and Spring Hills.*

## FOR IMMEDIATE RELEASE

**Murrieta**      **Volunteers Needed to Support Partial Reopening of Santa Rosa Plateau Ecological Reserve****Date:**            RSVP Deadline – September 30,2020**Site:**             Santa Rosa Plateau Ecological Reserve – 39400 Clinton Keith Road, Murrieta 92562**Contact:**       Rob Hicks – SRPER RivCoParks Interpreter – [rhicks@rivco.org](mailto:rhicks@rivco.org) (951) 677-6951  
Ginger Greaves – Recruitment Coord – [execdirector@srpnef.org](mailto:execdirector@srpnef.org) (909) 732-2209

The Santa Rosa Plateau Ecological Reserve is slowly, but surely, recovering from the September 4, 2019 Tenaja Fire and the COVID closures. Except for the Sylvan Meadows Multi-Use Area, the Reserve has remained closed to the public since the fire to help protect those sensitive habitat areas damaged from the fire, and cultural resources exposed by the fire. However, plans are now under way to partially reopen the Hidden Valley and Vernal Pool trailheads, located on Tenaja Road and Via Volcano Road, on Friday, Saturday and Sundays in the Fall. To do so, a robust recruitment effort is being launched to recruit over 100 adults, ages 21-64, to serve as Trailhead, Gatekeepers and Trail Protection volunteers. The Sylvan Meadows trailhead will remain open daily Monday-Sundays, 7am – 6pm. This new volunteer crew will be instrumental in the successful partial reopening of the trailheads and ultimately help with the full reopening in the future. In addition to the support needed for the partial reopening, volunteers will be on the list for other future volunteer opportunities at the Reserve.

Assignments will consist of 3-hour shifts between the hours of 7am and 6:30pm. Applicants should be aware that certain assignments may require a 2.5 mile round-trip hike into designated volunteer posts. All volunteers will be required to complete a RivCoParks' application and background check that requires fingerprinting, participate in volunteer training, adhere to COVID related social distancing and face mask mandates, and sign a liability waiver.

To receive a volunteer application, send an email with subject line *SRP Volunteer* to [programs@santarosaplateau.org](mailto:programs@santarosaplateau.org) by September 30. Visit [www.rivcoparks.org](http://www.rivcoparks.org) for additional information about County parks and the Santa Rosa Plateau Ecological Reserve.

#####

# Community Action Partnership

# PATHWAYS TO EMPLOYMENT

Are you an adult 18 years or older and interested in paid on the job training?



### Community Action Pathways to Employment will provide you with:

**8 or 12 weeks on the job training**

**Must reside in Riverside County**

**Must be 18+ years old**

**Gain work experience and earn**

The opportunity to contribute to a community response to COVID-19 by supplying vital resources and services during the pandemic.

A paid stipend, training, mentorship, supportive services and wrap-around supports during their term of service.

To Apply Scan the code or visit the link below:  
<https://tinyurl.com/y6la3ctv>



For general questions contact:  
 Rivco Workforce Development  
 Phone: 951-955-0185  
 E-mail: [workforcehelp@rivco.org](mailto:workforcehelp@rivco.org)



# Community Action Partnership

# PATHWAYS TO EMPLOYMENT

Was your organization affected by the COVID-19 pandemic, and need help?



## Community Action Pathways to Employment

**If you are a Riverside County non-profit or government entity who has been affected by the COVID-19 pandemic and would like assistance, contact us!**

Assist non-profits and government entities on the front lines of the COVID-19 response through additional workforce support.

Provide on the job training for adults 18+ to engage in local projects and support organizations directly affected by the COVID-19 pandemic.

To Apply Scan the code or visit the link below:  
<https://tinyurl.com/yxtexhf5>



For general questions visit: [www.capriverside.org](http://www.capriverside.org)  
 Call: 951-955-0185  
 or E-mail: [workforcehelp@rivco.org](mailto:workforcehelp@rivco.org)





**NATIONAL NIGHT OUT 2020**

POLICE ~ COMMUNITY PARTNERSHIPS

**SOCIAL DISTANCING  
COMMUNITY DRIVE-THRU**

**Tuesday,  
October 6, 2020  
4 – 8 PM**

**REGISTER YOUR NEIGHBORHOOD  
AND JOIN THE COMMUNITY**

The first 30 neighborhoods that register will have local officials drive through their neighborhoods.

Register between **September 7 – September 25, 2020** at

**RPOnline.org**

National Night Out (NNO) is an annual community-building campaign that promotes police-community partnership and neighborhood camaraderie.

We are asking of those participating in National Night Out 2020 to follow all CDC COVID-19 regulations and social distance with your neighbors. Please note large gatherings are not allowed and your local officials will not be stopping to visit. Local officials will simply just be driving through registered participating neighborhoods as they wave "Hi!"

**We'll see You at  
March Field Air Museum**



**NOW OPEN**

MARCH FIELD AIR MUSEUM

**Are you a parent or youth experiencing stress?**

Call or text the California Parent and Youth Helpline to receive immediate support.

**1-855-4A-Parent  
(1-855-427-2736)**

Services are available in English and Spanish 7 days a week from 8am - 8pm.

Virtual peer support groups are also available.





## 1<sup>st</sup> DISTRICT BALLOT DROP-OFF LOCATIONS

### November 2020 General Election

*\* some not technically be in 1<sup>st</sup> district but maybe helpful to 1<sup>st</sup> District residents.*

**Dates and hours vary – see below for more info.**

The Shops At Dos Lagos*	2795 Cabot Drive, Suite 6-110	Corona
Trilogy at Glen Ivy*	24503 Trilogy Parkway	Temescal Valley
Lake Elsinore County Library*	600 W Graham Avenue	Lake Elsinore
Outlets at Lake Elsinore*	17600 Collier Avenue, Ste F154a	Lake Elsinore
Mead Valley County Library*	21580 Oakwood Street	Perris
Moses-Schaffer Community Center*	21565 Steele Peak Drive	Perris
Arlanza Community Center*	7950 Philbin Avenue	Riverside
Janet Goeske Senior Center*	5257 Sierra Street	Riverside
Lake Mathews Community Room*	16453 El Sobrante Road	Riverside
Orange Terrace Community Center*	20010 Orange Terrace Parkway	Riverside
Renck Community Center*	2724 Gateway Drive	Riverside
Woodcrest County Library*	16625 Krameria Avenue	Riverside
Ysmael Villegas Community Center*	3091 Esperanza Street	Riverside

**\*October 5, 2020 – November 2, 2020, Monday – Friday, 10:00am to 3:00pm; and Election Day, November 3, 2020, 7:00am to 8:00pm.**

City of Canyon Lake**	31516 Railroad Canyon Road	Canyon Lake
City of Lake Elsinore**	130 S Main Street	Lake Elsinore
City of Murrieta**	1 Town Square	Murrieta
City of Riverside**	3900 Main Street, 7th Floor	Riverside
City of Temecula**	41000 Main Street	Temecula
City of Wildomar**	23873 Clinton Keith Road, Ste 106	Wildomar

**\*\*October 5, 2020 – November 2, 2020, during regular city business hours; and Election Day, November 3, 2020, 7:00am to 8:00pm.**

Riverside Co Registrar of Voters***	2720 Gateway Drive	Riverside
-------------------------------------	--------------------	-----------

**\*\*\*The Riverside County Registrar of Voters office ballot drop box is available 24/7 starting October 5, 2020.**

For full list of Riverside County locations, please visit [www.voteinfo.net](http://www.voteinfo.net)

# 1<sup>st</sup> DISTRICT VOTER ASSISTANCE CENTER LOCATIONS

## November 2020 General Election

### Dates and Times:

October 31, 2020 – November 2, 2020, 9:00am to 5:00pm

Election Day, November 3, 2020, 7:00am to 8:00pm

Canyon Lake Country Club	Magnolia Room	32001 Railroad Canyon Road	Canyon Lake
Luiseno Elementary School	Gymnasium	13500 Mountain Road	Temescal Valley
Temescal Valley Elem. School	MPR	22950 Claystone Avenue	Temescal Valley
The Shops at Dos Lagos *	Suite 6-110	2795 Cabot Drive	Corona
Canyon Lake Middle School	MPR	33005 Canyon Hills Road	Lake Elsinore
Dream Extreme Center	Main Hall	117 S Langstaff Street	Lake Elsinore
Lake Elsinore USD	Lakeside Library	32593 Riverside Drive	Lake Elsinore
Lakeland Village Comm Center	MPR	16275 Grand Avenue	Lake Elsinore
Outlets at Lake Elsinore	Building F, F154a	17600 Collier Ave, Ste A100	Lake Elsinore
Mead Valley Community Center	Banquet Hall	21091 Rider Street	Perris
Arlanza Community Center	Conf Room	7950 Philbin Avenue	Riverside
Arlington Library	Comm Room	9556 Magnolia Avenue	Riverside
Cesar Chavez Community Center	Auditorium	2060 University Avenue	Riverside
Janet Goeske Senior Center *	MPR	5257 Sierra Street	Riverside
La Sierra Branch Library	Comm Room	4600 La Sierra Avenue	Riverside
La Sierra Senior Center	Ballroom	5215 La Sierra Avenue	Riverside
Lake Mathews Elem School	MPR	12252 Blackburn Road	Riverside
Orange Terrace Comm Center	Ballroom	20010 Orange Terrace Pkwy	Riverside
Renck Community Center *	Grand Ballroom	4015 Jackson Street	Riverside
Riv Co Registrar of Voters	Lobby	2720 Gateway Drive	Riverside
Casa Blanca Library	Comm. Room	2985 Madison Street	Riverside
Stratton Community Center	MPR	2008 Martin Luther King Blvd	Riverside
Woodcrest County Library	Meeting Room	16625 Krameria Avenue	Riverside
Ysmael Villegas Comm Center	Banquet Room	3091 Esperanza Street	Riverside
Wildomar City Hall	Ste 106	23873 Clinton Keith Road	Wildomar
Wildomar County Library	Meeting Room	34303 Mission Trail	Wildomar

\* not in 1<sup>st</sup> district but maybe helpful to 1<sup>st</sup> District residents.

**In addition to the hours listed above, the Riverside County Registrar of Voters office (2720 Gateway Drive, Riverside) is open October 5, 2020 – October 30, 2020, Monday – Friday, 8:00am to 5:00pm, and Saturday, October 24, 2020, 9:00am to 4:00pm.**

For full list of Riverside County locations, please visit [www.voteinfo.net](http://www.voteinfo.net)